

Section 5

Overfill Protection



Section 5

Overfill Protection

Civacon	1-8	Scully	9-18
RomLink Plug-N-Load System	1-4	<i>Intellicheck2 Monitor</i>	9
<i>RomLink Monitor</i>	2	<i>Intellicheck2 System</i>	10
<i>RomLink Sensor</i>	3	<i>2-wire Sensor</i>	11-12
<i>RomLink Sockets</i>	4	<i>Load Anywhere Monitor</i>	13
<i>Safe-T Ground Bolt</i>	4	<i>5-wire Sensor</i>	14-15
<i>CID</i>	4	<i>Sockets & Adaptors</i>	16-17
<i>Rom2 System</i>	5-8	<i>Dummy, Ground & TIM</i>	18
<i>Rom2 Monitor</i>	7	<i>Truck Tester</i>	18
<i>Rom2 Sensor</i>	8		
Flo-tech (Dixon)	19-31		
<i>Checkmate System</i>	19		
<i>Plug-n-Play Monitor</i>	20		
<i>Plug-n-Play Sensor</i>	21		
<i>Plug-n-Play Sockets</i>	22		
<i>R/OM System</i>	23		
<i>R/OM Monitor</i>	24		
<i>R/OM Optic Socket</i>	25		
<i>Single/Double Sockets</i>	26-27		
<i>Truck Tester</i>	27		
<i>Competitor Cross Ref. Chart</i>	28-31		



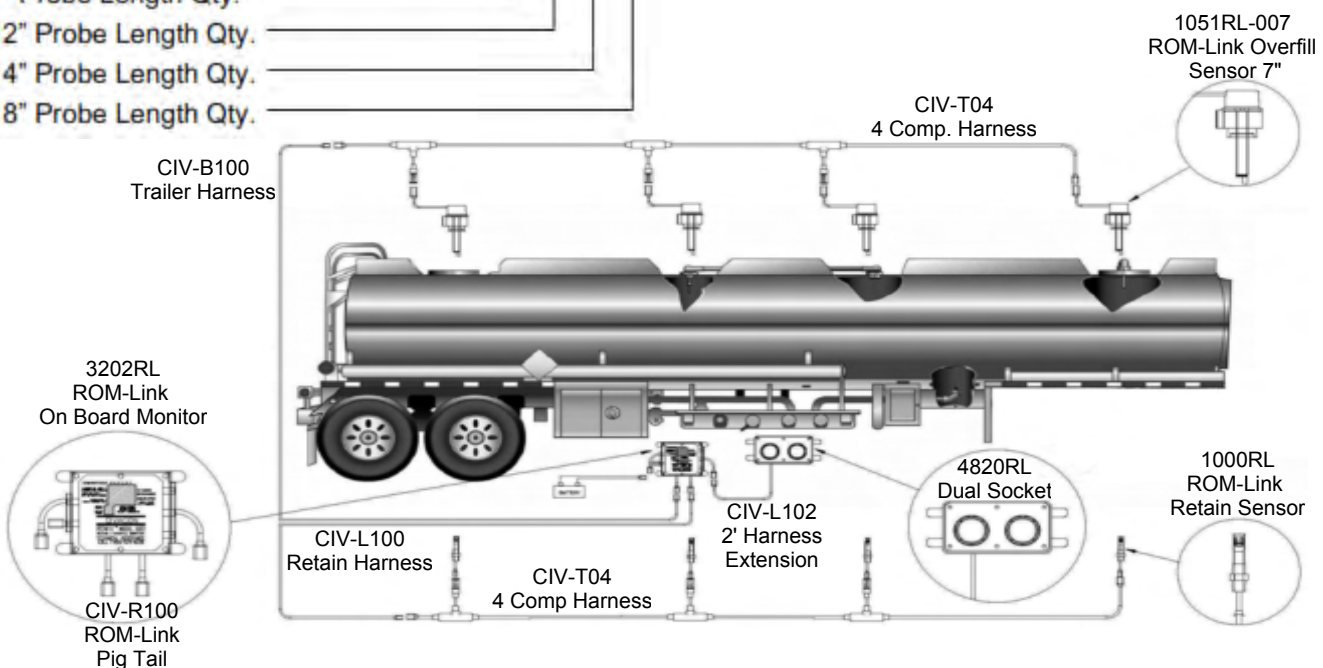
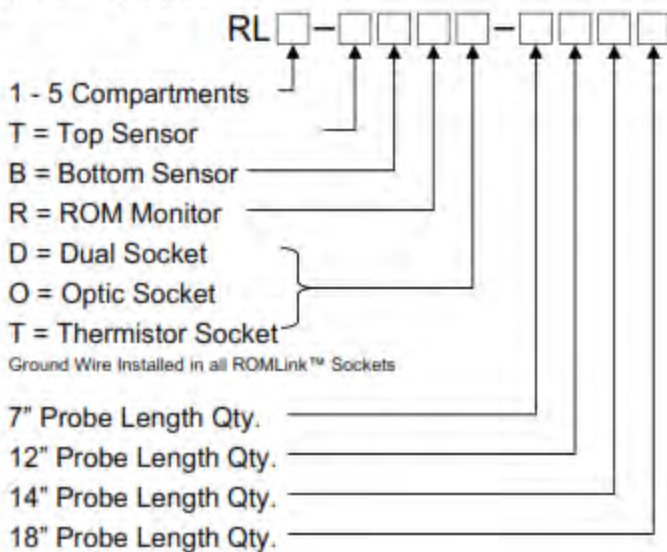
ROMLink™ “Plug-N-Load” System



Features and Benefits

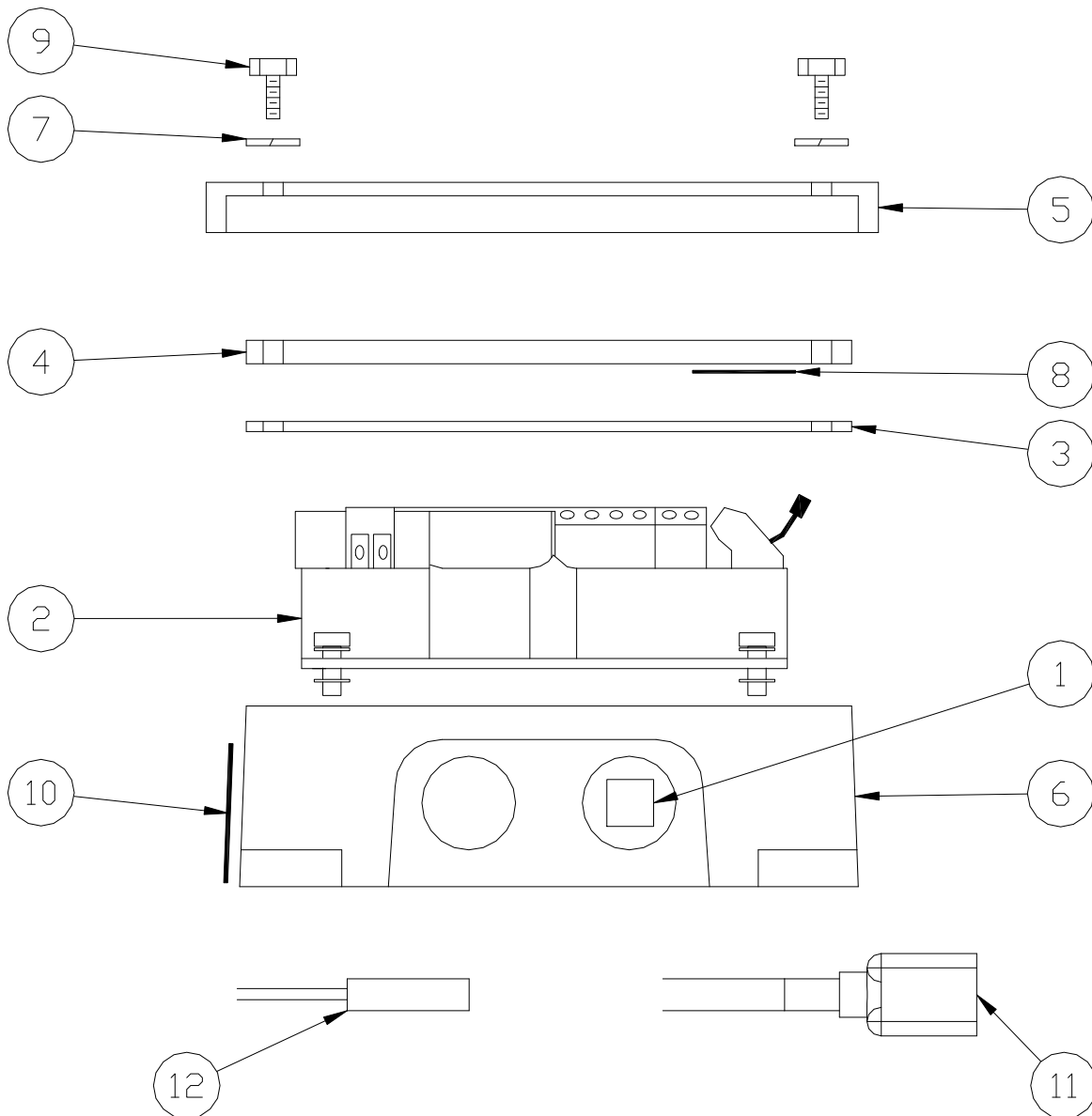
- Crimp-Free Installation
- No Special Tools or Training Required
- Fits up to Five Compartment Layout Configurations
- Can be added to existing trucks with overfill systems
- Completely Sealed harness system that will last in any environment
- Components color-coded for easy identification

Ordering Specifications





3202RL ROMLink On Board Monitor



PARTS BREAK DOWN

ITEM	PART NUMBER	DESCRIPTION	QTY.
1	H51916M	BLACK PLUG, 1/2" NPT	4
2	C51423 ¹	ASSY. MODULE	1
3	C40015M ²	GASKET	1
4	C51426M ²	WINDOW	1
5	C40104APC ²	COVER	1
6	D40006APC	BASE	1
7	H50086M ²	LOCK WASHER, 1/4"	6
8	C51503M	LABEL, TECH ASSISTANCE	1

1 - Included in 3252-3252, 2 - Included in H50194

ITEM	PART NUMBER	DESCRIPTION	QTY.
9	9541 ²	SCREW, 1/4-20 1"	6
10	H51425M	NAME PLATE	1
11	CIV-R100	ROMLink PIGTAIL	**
12	1910A	INTERNAL TERMINATOR	1

** Number of Pigtails equal to ROMLink Configuration

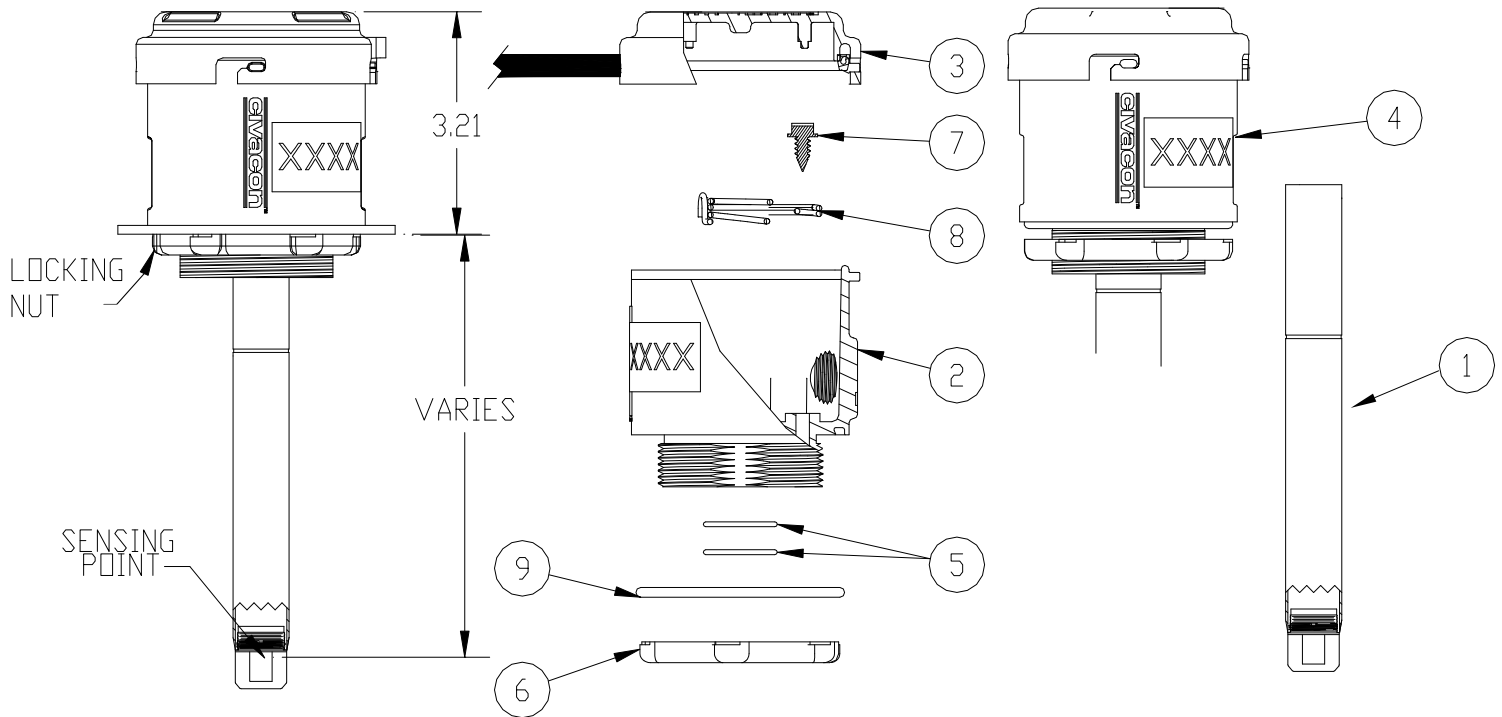
REPAIR KITS	
3252-3252	REPL. ON BOARD MONITOR
H50194	WINDOW ENCLOSURE REPAIR KIT



1554 Series Optic Sensor (2-Wire)

REFERENCE CHART

ROMLINK PART #	CIVACON ROM PART #	DESCRIPTION
1554-007	1051RL-007	OPTIC OVERFILL SENSOR, RJ-11 CONNECTOR, 2" BSPP PARALLEL PORT HOUSING, 7"
1554-0012	1051RL-0012	OPTIC OVERFILL SENSOR, RJ-11 CONNECTOR, 2" BSPP PARALLEL PORT HOUSING, 12"
1554-0018	1051RL-0018	OPTIC OVERFILL SENSOR, RJ-11 CONNECTOR, 2" BSPP PARALLEL PORT HOUSING, 18"
STK-007		REPLACEMENT OPTIC OVERFILL SENSOR, RJ-11 CONNECTOR, NO HOUSING 7"
STK-0012		REPLACEMENT OPTIC OVERFILL SENSOR, RJ-11 CONNECTOR, NO HOUSING 12"
STK-0018		REPLACEMENT OPTIC OVERFILL SENSOR, RJ-11 CONNECTOR, NO HOUSING 18"



ITEM	PART NUMBER	DESCRIPTION	QTY.	ITEM	PART NUMBER	DESCRIPTION	QTY.
1	STK-XXXB	OVERFILL PROBE TUBE	1	6	H52477M	LOCK NUT	1
2	H52841	HOUSING BODY	1	7	H52898M	SCREW	1
3	1356-2W	CAP 2-WIRE OPTIC SENSOR	1	8	H52845M	SPRING	1
4	H52301M-1554	LABEL	1	9	H52844M	O-RING, VITON	1
5	H52842M	O-RING, BUNA-N	2		H52841-NPT	HOUSING ASSEMBLY	

ROMLINK SOCKETS

PART NUMBER	DESCRIPTION
4102RL	ROMLINK OPTIC SOCKET
4402RL	ROMLINK THERMISTOR SOCKET
4822RL	ROMLINK DUAL SOCKET W/ PIGTAIL
4300RL	ROMLINK OPTIC J560 W/O GROUND WIRE
4500RL	ROMLINK THERMISTOR J560 W/O GROUND WIRE



DUAL SOCKET

PART NUMBER	DESCRIPTION
4820L	CABLE OUT OF THE LEFT SIDE
4820R	CABLE OUT OF THE RIGHT SIDE
C40151-THERM	REPLACEMENT THERMISTOR FACEPLATE
C40151A-OPTIC	REPLACEMENT OPTIC FACEPLATE



SAFE-T GROUND BOLT

PART NUMBER	DESCRIPTION
GS1000	SAFE-T GROUND BOLT KIT
GS1001	SAFE-T GROUND WIRE KIT
GS1002	SAFE-T GROUND BALL KIT



CiVD ELECTRONIC SERIAL NUMBER

PART NUMBER	DESCRIPTION
CID-1000	ELECTRONIC SERIAL NUMBER

The CID-1000 Electronic Serial Number provides a unique electronic serial number to loading racks equipped to automatically read this industry standard format number. The serial number is used by the terminal automation system to electronically identify the cargo tank.





ROM II - RETAIN OVERFILL MONITOR SYSTEM

Product Number

Product Description

ROM II “Load Any Rak” SYSTEMS (Overfill & Retain Probes)

3022	2 Compartment System
3023	3 Compartment System
3024	4 Compartment System
3025	5 Compartment System
3026	6 Compartment System

Systems Include: (1) Model 1051-007 Top Sensor and (1) Model 1000 Bottom Sensor for each compartment, (1) Model 3202-R Retain Overfill Monitor, (1) Model 2300 7-conductor wire, (1) Model 2530 Strain Reliefs and (2) Model 1910 Terminators for systems having less than six compartments.

ROM II “Load Any Rak” TOP ONLY SYSTEMS

3032	2 Compartment System
3033	3 Compartment System
3034	4 Compartment System
3035	5 Compartment System
3036	6 Compartment System

Systems Include: (1) Model 1051-007 Top Sensor for each compartment, (1) Model 3202 Retain Overfill Monitor, (1) Model 2310 7- conductor wire, (1) Model 2510 Bag of Strain Reliefs and (1) Model 1910 Terminator for systems having less than six compartments.

OPTIC SENSORS

1051-007	Adjustable Optic Overfill Top Sensor (2- wire) with Housing
1000	Optic Retain Bottom Sensor
1351-007	Replacement Optic Overfill Probe, No Housing
1910	Terminator

COMPATIBLE ONBOARD ROM II MONITOR

3202	1- 6 Compartment Onboard ROM Monitor, Indicator Lights
3212	1- 6 Compartment Onboard ROM Monitor, with Keys and Key Switch
3252	Replacement Onboard ROM Monitor



ROM II Overfill Detection System

Overfill Detection Engineered and Manufactured to Handle Real World Demands

Companies involved in the transportation and handling of hazardous bulk commodities rely on real world safeguarding against costly overfills every day and they rely on Civacon to provide it. The ROM[™] II Overfill Detection System is manufactured to deliver years of worry-free performance under the most rigorous conditions. Its flexible 2-wire optic sensing system interfaces with optic, thermistor or float-type rack monitors. Unique patented, built-in diagnostics differentiate between non-operating sensors, broken or corroded connections. The ROM II continuously checks for any single-point system failures more than 90 times per second.

MODEL NUMBERS

PART NUMBER	DESCRIPTION
3031	ROM II 1-COMPARTMENT
3032	ROM II 2-COMPARTMENT
3033	ROM II 3-COMPARTMENT
3034	ROM II 4-COMPARTMENT
3035	ROM II 5-COMPARTMENT
3036	ROM II 6-COMPARTMENT



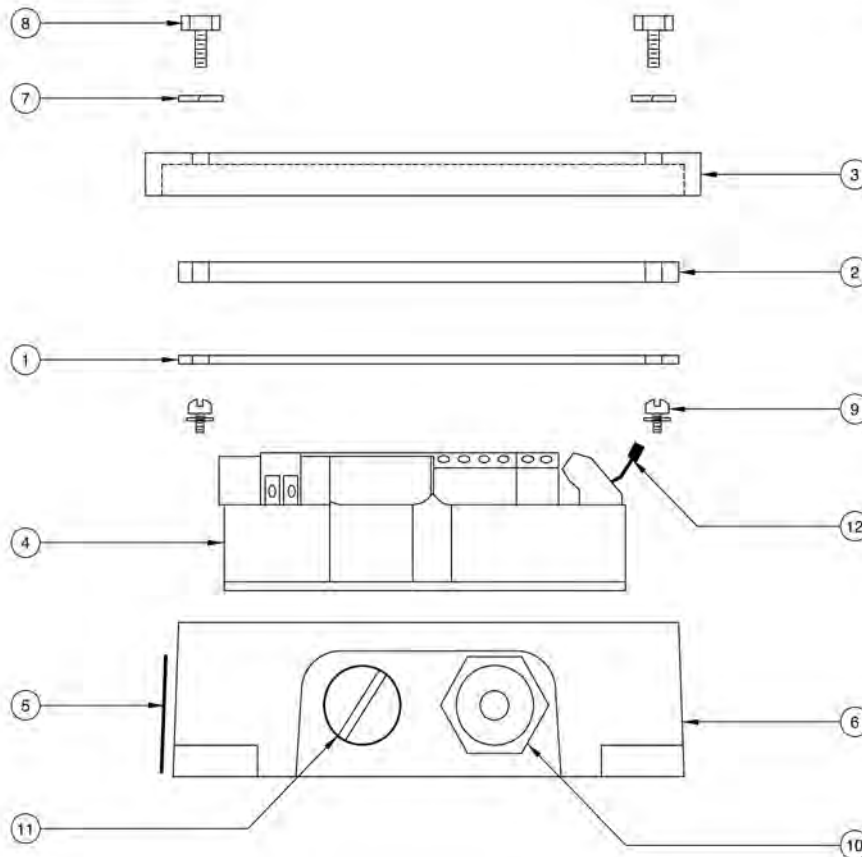
- Advanced 2-wire optic sensing system interfaces with optic, thermistor or float-type rack monitors.
- Patented diagnostics differentiate between non-operating sensors, broken or corroded connections.
- Automatically monitors and continuously checks for single-point system failures more than 90 times per second.
- Three auxiliary inputs for vapor collection, brake interlock, pressure sensors or other add-ons.
- Socket status lights to confirm proper "connection-to-the-rack" signals.

SYSTEMS INCLUDE:	
QTY	DESCRIPTION
1	MODEL 1051-XXXX OVERFILL SENSOR FOR EACH COMPARTMENT
1	MODEL 1000R BOTTOM SENSOR FOR EACH COMPARTMENT
1	MODEL 3202R-3202 RETAIN OVERFILL MONITOR
1	MODEL 2300-2300 7- CONDUCTOR WIRE
1	BAG OF STRAIN RELIEFS
1	MODEL 1910A TERMINATOR (SYSTEMS W/ LESS THAN 6 COMPARTMENTS)
1	JUNCTION BOX W/ IN-LINE FUSE



Model #3202 ROM II On Board Monitor for use with Civacon 2-Wire Optic Sensors

Replacement Parts



ITEM	PART NUMBER	DESCRIPTION	QTY.
1	C40015M	GASKET (ENCLOSURE, OBM)	1
2	C51426M	WINDOW (ENCLOSURE, OBM)	1
3	C40104APC	COVER (ENCLOSURE, OBM, GRAY POWDERCOATED)	1
4	3252	ASSEMBLY MODULE (OPTIC OBM)	1
5	H51425M	NAME PLATE (APPROVALS, ROM II)	1
6	D40006APC	BASE (ENCLOSURE, OBM, GRAY POWDERCOATED)	1
7	H50086M	WASHER (1/4" SPLIT, S.S.)	6
8	H50114M	SCREW (1/4-20 X 3/4, S.S.)	6
9	H50623M-2	SCREW (#6-32 X 3/8 S.S. W/LOCK WASHER)	4
10	H50452	SWITCH ASSEMBLY (1/2" N.P.T.)	1
11	H50070M	PIPE PLUG (1/2" N.P.T.)	1
12	H51642M	JUMPER STRIP (10 POSITION)	1

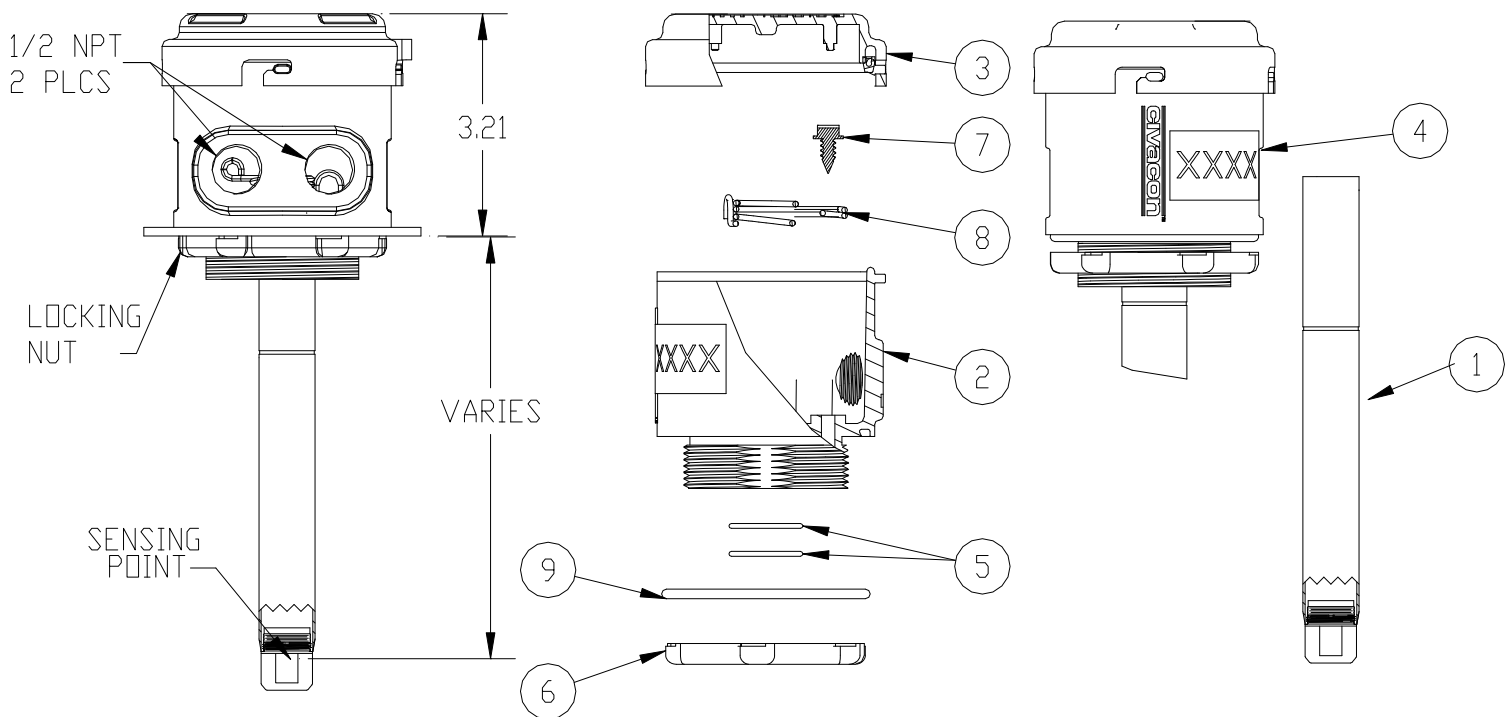
*H50194 - COVER REPAIR KIT (ITEMS 1,2,3,7,8)



1051 Series Optic Sensor (2-Wire ROM)

REFERENCE CHART

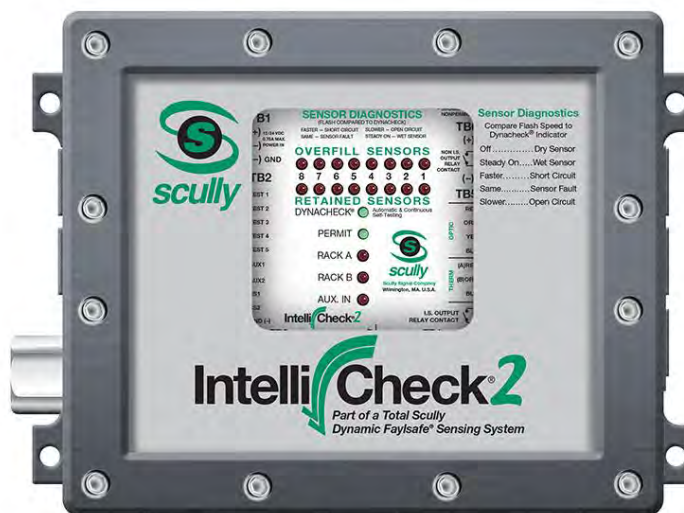
PART NUMBER	DESCRIPTION
1051-007B	OPTIC QS OVERFILL SENSOR, 2-WIRE, 2" NPT PARALLEL PORT PORT HOUSING, 7"
1051-0012B	OPTIC QS OVERFILL SENSOR, 2-WIRE, 2" NPT PARALLEL PORT PORT HOUSING, 12"
1051-0018B	OPTIC QS OVERFILL SENSOR, 2-WIRE, 2" NPT PARALLEL PORT PORT HOUSING, 18"
1351-007B	RELACEMENT OPTIC QS OVERFILL SENSOR, 2-WIRE, NO HOUSING 7"
1351-0012B	RELACEMENT OPTIC QS OVERFILL SENSOR, 2-WIRE, NO HOUSING 12"
1351-0018B	RELACEMENT OPTIC QS OVERFILL SENSOR, 2-WIRE, NO HOUSING 18"
1455-1455	2" NPT PARALLEL PORT HOUSING W/ CAP
12214	TAMPER EVIDENT TAB KIT



ITEM	PART NUMBER	DESCRIPTION	QTY	ITEM	PART NUMBER	DESCRIPTION	QTY
1	1351-XXXB	OPTIC OVERFILL PROBE	1	6	H52477M	LOCK NUT	1
2	H52931	HOUSING BODY	1	7	H52898M	SCREW	1
3	H52936M	CAP W/ U-CUP SEAL	1	8	H52845M	SPRING	1
4	H52301M-1110	LABEL	1	9	H52844M	O-RING, VITON	1
5	H52842M	O-RING, BUNA-N	2		1455-1455	PROBE HOUSING & CAP	

** H50070M PIPE PLUG KIT (NOT SHOWN)

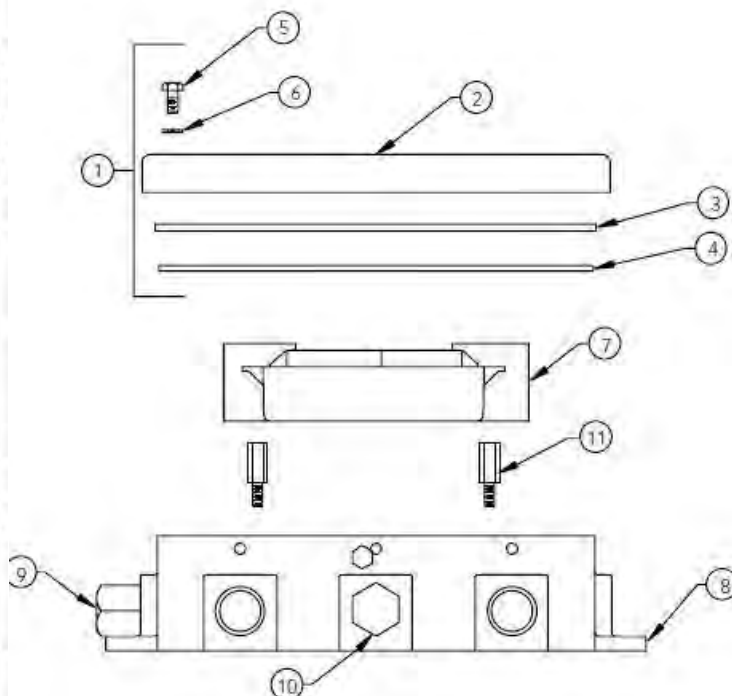
** ALL ITEMS INCLUDED IN 1455-1455 EXCEPT ITEM 1 & 4**



INTELLICHECK2 CONTROL MONITOR #09109

PART NUMBER	MODEL NAME
09107	OVERFILL & RETAINED MONITOR
09109	OVERFILL MONITOR
09108	SHO, SPECIAL HIGH CURRENT OUTPUT RELAY OVERFILL MONITOR

REF. #	PART NUMBER	DESCRIPTION	QTY
1	09132	COVER ASSY (INCLUDES ITEMS 2-6)	1
2	32600	COVER	1
3	32601	WINDOW, FM AND CSA	1
4	31787	GASKET, COVER	1
5	50151	SCREW, HEX HEAD, 10-24 X 3/4", SS	12
6	51122	LOCKWASHER, SPLIT, #10, SS	2
7	09110	REPLACEMENT MODULE OVERFILL & RETAINED	1
	09111	REPLACEMENT MODULE OVERFILL ONLY	1
	09112	REPLACEMENT MODULE SHO, OVERFILL ONLY	1
8	32599	BASE, 1/2" NPT CONDUIT ENTRIES	1
9	31820	SWITCH ASSY, RESET	1
10	50740	PIPE PLUG, PLASTIC, 1/2" NPT	8
	31616	FUSE & HOLDER, IN-LINE, 1/2 AMP (NOT SHOWN)	1
11	31842	STANDOFF, MALE-FEMALE, 5/16" HEX, 10-32 X 7/8" LG., ALUMINUM	



ORDERING INFORMATION

Overfill and Retained Kit		with 7" Standard Sensor	with 12" Extended Sensor
# of Compartments	Cable Type/Cable Length	Part #	Part #
1	7 Cond./200 ft.	08361	08971
2	7 Cond./200 ft.	08362	08972
3	7 Cond./200 ft.	08363	08973
4	7 Cond./200 ft.	08364	08974
5	7 Cond./200 ft.	08365	08975
6	7 Cond./200 ft.	08366	08976
7	11 Cond./200 ft.	08382	08977
8	11 Cond./200 ft.	08383	08978

Overfill Only Kit		with 7" Standard Sensor	with 12" Extended Sensor
# of Compartments	Cable Type/Cable Length	Part #	Part #
1	7 Cond./100 ft.	08251	08961
2	7 Cond./100 ft.	08352	08962
3	7 Cond./100 ft.	08353	08963
4	7 Cond./100 ft.	08354	08964
5	7 Cond./100 ft.	08355	08965
6	7 Cond./100 ft.	08356	08966
7	11 Cond./100 ft.	08380	08967
8	11 Cond./100 ft.	08381	08968

Control Units Only	
Description	Part #
IntelliCheck®2 Overfill Monitor	09109
IntelliCheck®2 Overfill and Retained Monitor	09107

Replacement Parts	
Description	Part #
IntelliCheck2, Overfill Only Replacement Module	09111
IntelliCheck2, Overfill and Retained Replacement Module	09110
IntelliCheck2, Cover Gasket	31789
IntelliCheck2, 1/2 amp fuse	26310
IntelliCheck2, Replacement Cover Assembly	09132
IntelliCheck2, Replacement Retain Acknowledge Switch	31820
IntelliCheck2, Fuse and Holder Assembly	31616

Copyright © 2002 Scully Signal Company. IntelliCheck2, Fayisafe and Dynacheck are registered trademarks of the Scully Signal Company, in the United States and/or other countries. All Rights Reserved.



Featuring Dynacheck® – Automatic and Continuous Self-Checking Circuitry

DESCRIPTION

Scully two-wire optic sensors are purpose-built for liquid petroleum product overfill prevention and point level detection.

They are designed to be used with the Scully Intellitrol® and ST-15 series loading rack control monitors. The sensors can also be used with the Scully IntelliCheck® II Monitor. There is no waiting for the control monitors' permit light to go on because the sensor requires no warm up time. Overfill prevention applications include road tankers, rail cars and storage tanks.

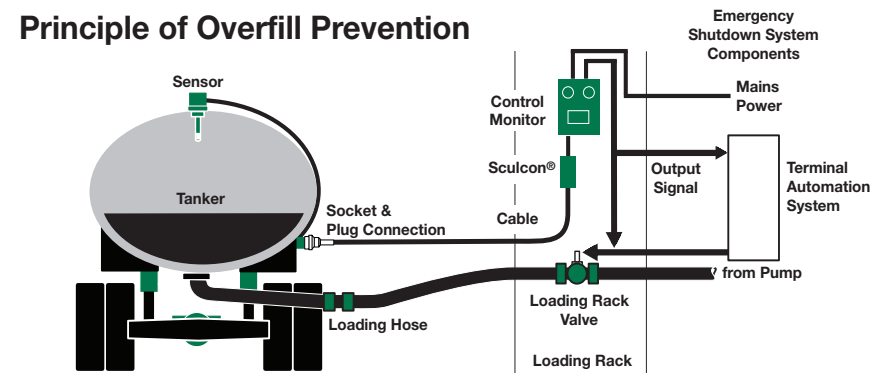
The two-wire optic sensor is a critical component in Scully's unique and patented Dynacheck circuit design. When used in conjunction with Scully electronic monitoring equipment, our overfill protection sensor will provide consistent failsafe monitoring. By constantly checking a "closed loop" pulsing signal across the entire system, Scully ensures a safe and reliable loading operation. If rising fuel contacts the sensor, this signal is interrupted and the controlling pumps and valves are shutdown. No operator involvement is needed to end the loading operation.



2-Wire Sensor

The ScuL-Sense™ design is API compliant and withstands temperature related stresses, dramatically improving reliability across a wide operating range.

Principle of Overfill Prevention



ORDERING INFORMATION

<i>Model</i>	<i>Description</i>	<i>Shaft Length</i>	<i>Part Number</i>
SP-TO/MHC(MC)	Two-Wire Optic Sensor, 2" NPT holder, 2 1/8" Medium Cap	7" (175mm)	09408L1
		12" (300mm)	09413L1
		15" (375mm)	09416L1
SP-TO/MHCF(MC)	Two-Wire Optic Sensor, flanged holder, 2 1/8" Medium Cap	7" (175mm)	09407L1
		12" (300mm)	09412L1
		15" (375mm)	09415L1
SD-5CE	5-Element Electronic Dummy		08542

Employed on tank trucks with less than 6 compartments (8 in Canada) when not using IntelliCheck® II monitor

REPLACEMENT PARTS

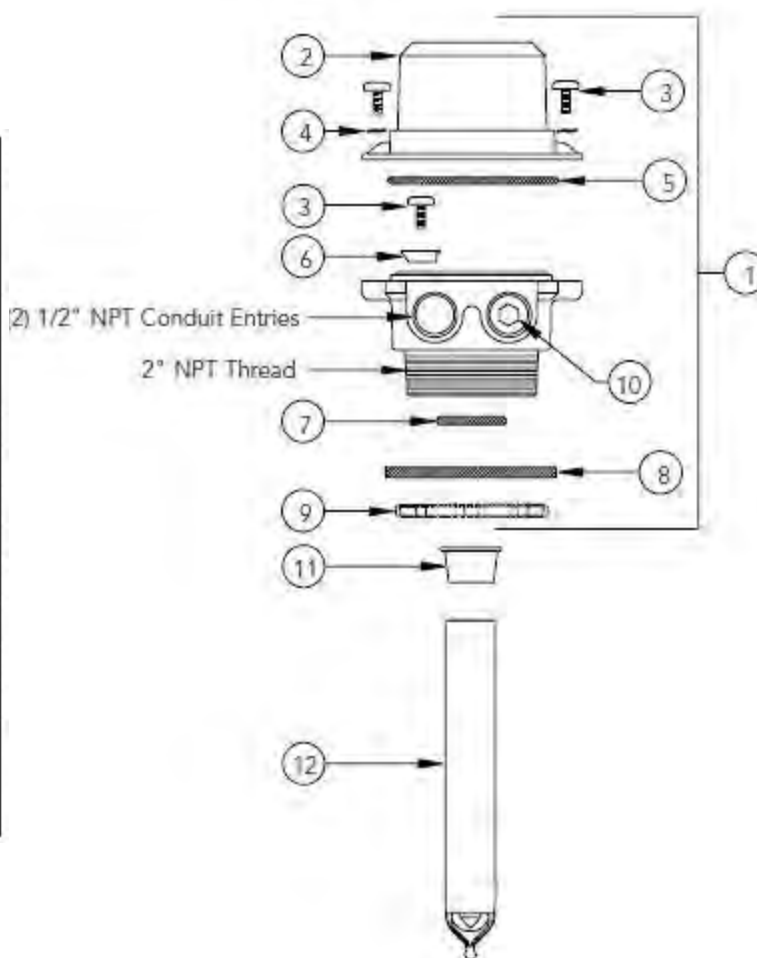
<i>Model</i>	<i>Description</i>	<i>Shaft Length</i>	<i>Part Number</i>
SP-TO	Two-Wire Optic Sensor, (without holder)	7" (175mm)	09409L1
		12" (300mm)	09414L1
		15" (375mm)	09417L1
SP-MHC(MC)	2" NPT Threaded Holder Only		09065
SP-MHCF(MC)	Flanged Holder Only		08265

2-WIRE OVERFILL PROBES

PART NUMBER	MODEL NAME
09408	SP-TO/MHC (MC), 7" SENSOR
09413	SP-TO/MHC (MC), 12" SENSOR
09416	SP-TO/MHC (MC), 15" SENSOR



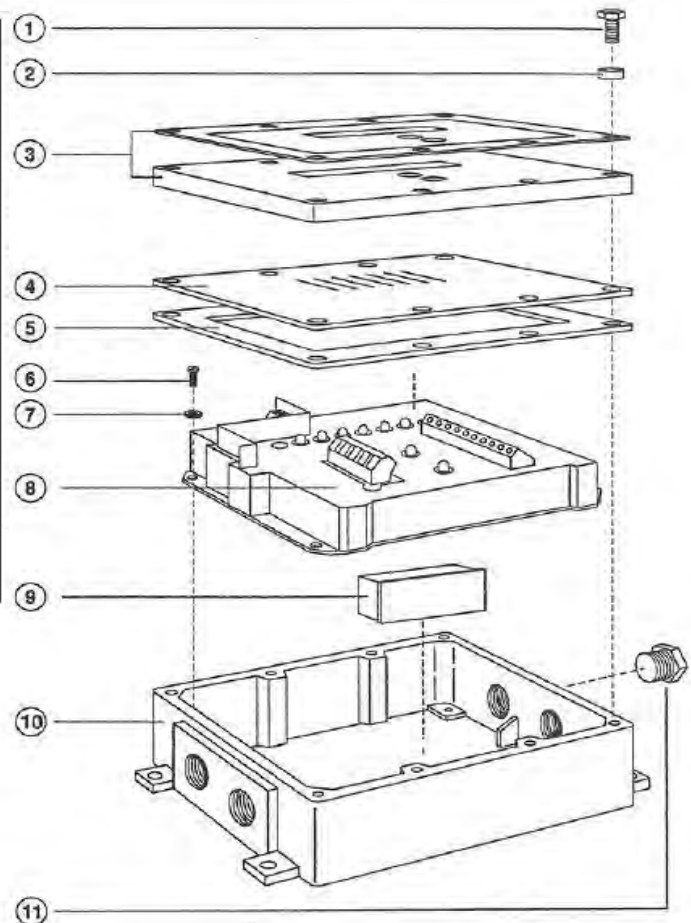
REF. #	PART NUMBER	DESCRIPTION	QTY
1	09065	SP-MHC (MC) SENSOR HOLDER ASSY 1/2" NPT CONDUIT ENTRIES (INCLUDES ITEMS 2-10)	1
2	20888	CAP, MEDIUM HEIGHT, 2-1/8" (54MM)	1
3	50652	SCREW, SELF-TAPPING PHILLIPS TRUSS HEAD, 10-24 X 1/2", SS	3
4	51122	LOCKWASHER, SPLIT, #10, SS	20
5	20766	O-RING, COVER, VITON	1
6	32191	CLAMP, SENSOR SHAFT RETAINING	1
7	22188	O-RING, SESOR SHAFT, VITON	1
8	20893	GASKET, HOLDER MOUNTING, VITON	1
9	57044	MOUNTING NUT, HOLDER	1
10	50766	PIPE PLUG, PLASTIC, 1/2" NPT	1
11	28397	CAP, SENSOR WIRE PROTECTOR	1
12	09409	REPLACEMENT OPTIC SENSOR, 7"	1
	09414	REPLACEMENT OPTIC SENSOR, 12"	1
	09417	REPLACEMENT OPTIC SENSOR, 15"	1





LOAD ANYWHERE CONTROL MONITOR #08687

REF. #	PART NUMBER	DESCRIPTION	QTY.
1	50132	COVER BOLTS, STAINLESS	1
2	51229	NYLON WASHER	8
3	N/A	COVER & LABEL ASSY.	
4	31350	INDICATOR COVER	1
5	22027	COVER GASKET	1
6	50545	MOUNTING SCREW	1
7	51101	LOCK WASHER, STAINLESS	4
8	08563	CONTROL MODULE, 6-COMPARTMENT (INCLUDES 5,6,7 & 9)	1
9	21733	CORROSION CAPSULE	1
10	31349	HOUSING	1
11	50740	1/2" NPT PIPE PLUG	1
	08712	COVER ASSY. KIT (INCLUDES 1,2,3,4, & 5)	1



Featuring Dynacheck® – Automatic and Continuous Self-Checking Circuitry

DESCRIPTION

Scully five-wire optic sensors are purpose-built for liquid petroleum product overfill prevention and point level detection.

They are designed to be used with the Scully Intellitrol® and ST-35 series loading rack control monitors. The sensors can also be used with the Scully IntelliCheck® II Monitor or Scully Load Anywhere® Truck Monitor. There is no waiting for the control monitors' permit light to go on because the sensor requires no warm up time. Overfill prevention applications include road tankers, rail cars and storage tanks.

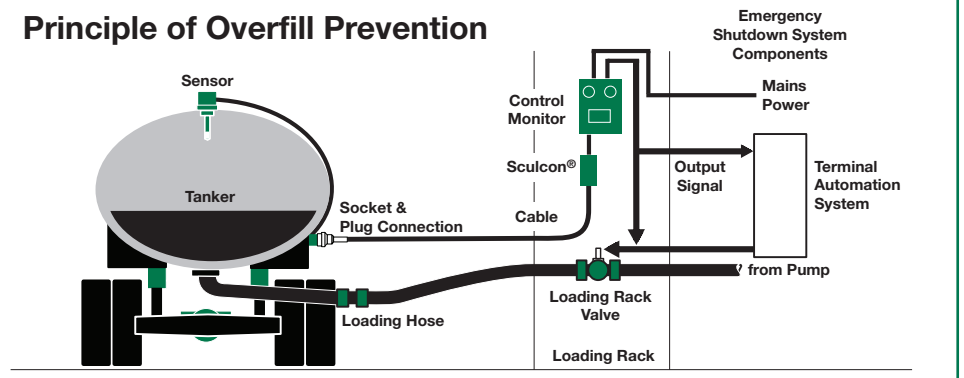
The five-wire optic sensor is a critical component in Scully's unique and patented Dynacheck circuit design. When used in conjunction with Scully electronic monitoring equipment, our overfill protection sensor will provide consistent failsafe monitoring. By constantly checking a "closed loop" pulsing signal across the entire system, Scully ensures a safe and reliable loading operation. If rising fuel contacts the sensor, this signal is interrupted and the controlling pumps and valves are shutdown. No operator involvement is needed to end the loading operation.



5-Wire Sensor

The ScuL-Sense™ design is API compliant and withstands temperature related stresses, dramatically improving reliability across a wide operating range.

Principle of Overfill Prevention



ORDERING INFORMATION

Model	Description	Shaft Length	Part Number
SP-FU/MHC(MC)	Five-Wire Optic Sensor, 2" NPT holder, 2 1/8" Medium Cap	7" (175mm)	09208L1
		12" (300mm)	09213L1
		15" (375mm)	09216L1
SP-FU/MHCF(MC)	Five-Wire Optic Sensor, flanged holder, 2 1/8" Medium Cap	7" (175mm)	09207L1
		12" (300mm)	09212L1
		15" (375mm)	09215L1

REPLACEMENT PARTS

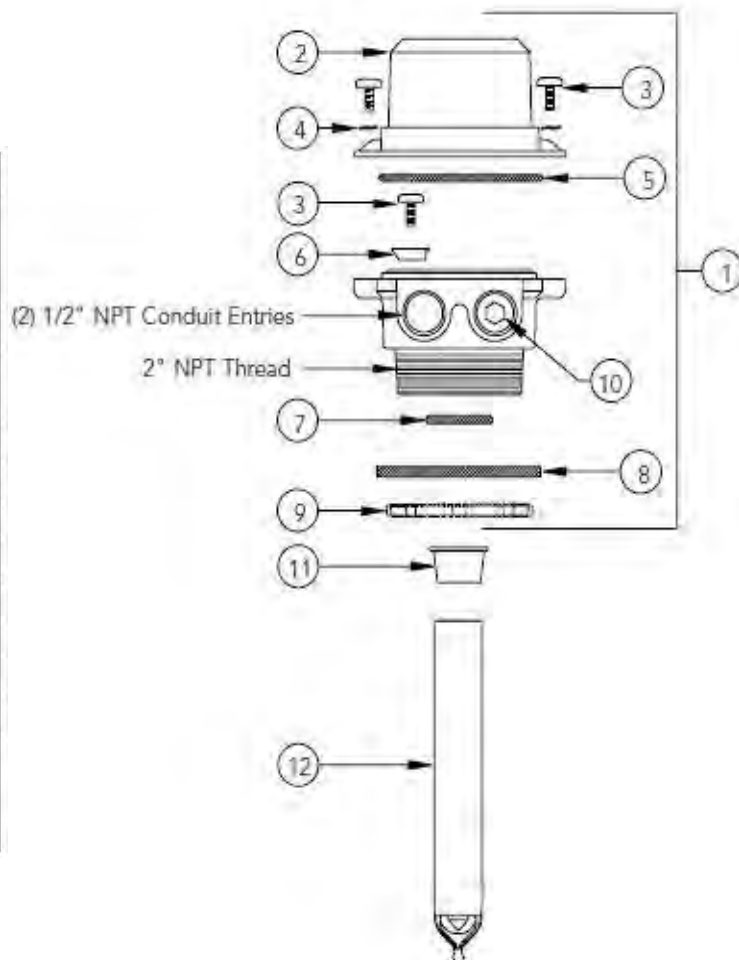
Model	Description	Shaft Length	Part Number
SP-FU	Five-Wire Optic Sensor, (without holder)	7" (175mm)	09209L1
		12" (300mm)	09214L1
		15" (375mm)	09217L1
SP-MHC(MC)	2" NPT Threaded Holder Only		09065
SP-MHCF(MC)	Flanged Holder Only		08265

5-WIRE OVERFILL PROBES

PART NUMBER	MODEL NAME
09208	SP-FU/MHC (MC), 7" SENSOR
09213	SP-FU/MHC (MC), 12" SENSOR
09216	SP-FU/MHC (MC), 15" SENSOR



REF. #	PART NUMBER	DESCRIPTION	QTY
1	09065	SP-MHC (MC) SENSOR HOLDER ASSY 1/2" NPT CONDUIT ENTRIES (INCLUDES ITEMS 2-10)	1
2	20888	CAP, MEDIUM HEIGHT, 2-1/8" (54MM)	1
3	50652	SCREW, SELF-TAPPING PHILLIPS TRUSS HEAD, 10-24 X 1/2", SS	3
4	51122	LOCKWASHER, SPLIT, #10, SS	20
5	20766	O-RING, COVER, VITON	1
6	32191	CLAMP, SENSOR SHAFT RETAINING	1
7	22188	O-RING, SESOR SHAFT, VITON	1
8	20893	GASKET, HOLDER MOUNTING, VITON	1
9	57044	MOUNTING NUT, HOLDER	1
10	50766	PIPE PLUG, PLASTIC, 1/2" NPT	1
11	28397	CAP, SENSOR WIRE PROTECTOR	1
12	09209	REPLACEMENT OPTIC SENSOR, 7"	1
	09214	REPLACEMENT OPTIC SENSOR, 12"	1
	09217	REPLACEMENT OPTIC SENSOR, 15"	1



SCULLY SOCKETS



OPTIC STYLE SOCKETS

PART NUMBER	DESCRIPTION
07974	SJ-6W OPTIC SOCKET, 3 J-SLOTS, WOGA (API) STYLE
21790	OPTIC FACEPLATE W/ CAP
08822	SJ-6W OPTIC SOCKET, WOGA (API) STYLE WITH SWITCH & AIR VALVE
08199	SJ-6X OPTIC SOCKET, J560 PATTERN
07973	SJ-6SO OPTIC SOCKET, SCULLY PATTERN
08575	BLUE VINYL REPLACEMENT CAP & CABLE ASSY., FOR OPTIC SOCKET

THERMISTOR STYLE SOCKETS

PART NUMBER	DESCRIPTION
07720	SJ-6S 2-WIRE THERMISTOR SOCKET, 8-PIN, API STYLE
20770	THERMISTOR FACEPLATE W/ CAP
07716	SJ-8S 2-WIRE THERMISTOR SOCKET, 10-PIN, SCULLY STYLE
07681	SJ-6 2-WIRE THERMISTOR SOCKET, SAEJ560 STYLE
08823	SJ-6S 2-WIRE THERMISTOR SOCKET, 8-PIN, W/ SWITCH & AIR VAVLE
08574	GREEN VINYL REPLACEMENT CAP & CABLE ASSY., FOR THERMISTOR SOCKET

DUOCEPT SOCKET

PART NUMBER	DESCRIPTION
09060	DUOCEPT, 5-WIRE OPTIC & THERMISTOR OVERFILL SOCKETS
09061	DUOCEPT, 5-WIRE OPTIC & THERMISTOR OVERFILL SOCKETS W/ T.I.M.

MULTECEPT SOCKET

PART NUMBER	DESCRIPTION
08763	MULTECEPT OTA4, NO WIRING OR DUMMY LOAD
08771	MULTECEPT OTA4, PREWIRED

Scully Sockets Are Your Connection to Complete Loading Rack Compatibility

Optic Sockets



SJ-6W: API standard three "J" slot socket for use with the Scully SC-6W three bayonet pin plug found on most Scully ST-35 and may Biclops® rack overfill prevention systems.



SJ-6SO: Scully style two "J" slot socket for use with the Scully SC-6A and SC-6AO two bayonet pin plug found on Scully ST-35 and most Biclops rack overfill prevention systems.



SJ-6X: SAE J560 style socket for use with the Scully bayonet pin Scully SC-8A plug found on some Scully ST-35 and Biclops rack overfill prevention systems.

Thermistor Sockets



SJ-6S: API standard two "J" slot socket for use with the two bayonet pin Scully SC-6A plug found on most Scully ST-6 and Biclops Rack overfill prevention systems.



SJ-6: SAE J560 style socket keyed for use with the Scully SC-6 SAE J560 style plug found on many Scully ST-6 and Biclops rack overfill prevention systems.



SJ-8S: Two "J" slot Scully style socket for use with the two Style Plug Adapters found on most Scully ST-8 and Biclops II rack overfill prevention systems.

Float Sockets



SJ-6F: Scully SAE J560 style socket for use with the SAE J560 plug found on most float style loading racks.



SJ-4D: Multi-purpose, 4 pole Socket. Mates with SC-1 Sculcon® and cane probes.



RHA-6

HA-6

Plug Adapters: 7-way to Scully style plug adapters.



SCULLY ACCESSORIES

ELECTRONIC DUMMIES

PART NUMBER	DESCRIPTION
08542	SD-5CE 5-ELEMENT ELECTRONIC DUMMY
08298	SD-5E 5-ELEMENT ELECTRONIC DUMMY



GROUND VERIFICATION COMPONENTS

PART NUMBER	DESCRIPTION
08274	GROUND BALL, COMPATIBLE W/ STAND-ALONE ST-47 GROUNDHOG SYSTEM
08560	GROUND BOLT, COMPATIBLE W/ INTELLITROL OR ST-47 GROUNDHOG SYSTEM



T.I.M. TRUCK IDENTIFICATION MODULE

PART NUMBER	DESCRIPTION
08836	T.I.M. FOR SCULLY V.I.P. SYSTEM COMPATIBILITY



TRUCK TESTERS & TRUCK TESTER REPLACEMENT PARTS

PART NUMBER	DESCRIPTION
08938	UNIVERSAL TRUCK TESTER (PCAM CABLE REQUIRED)
08926	PCAM 10-POLE SCULLY STYLE PLUG & CABLE, FOR UNIVERSAL TRUCK TESTER
08927	PCAM 6-POLE WOGA STYLE PLUG & CABLE, FOR UNIVERSAL TRUCK TESTER
08928	PCAM 7-POLE J560 STYLE OPTIC PLUG & CABLE, FOR UNIVERSAL TRUCK TESTER
08936	PCAM 4-POLE PLUG & CABLE, FOR UNIVERSAL TRUCK TESTER





Checkmate Overfill Detection Systems (Top Detection Only)



FloTech brand overfill system kits provide everything needed to install a new overfill system on your tank. One to eight compartment kits are available from our inventory. Other probe lengths are available.

CHECKMATE OVERFILL DETECTION SYSTEMS

PART NUMBER	DESCRIPTION
FT2801	CHECKMATE, 1 COMPARTMENT SYSTEM (TOP ONLY)
FT2802	CHECKMATE, 2 COMPARTMENT SYSTEM (TOP ONLY)
FT2803	CHECKMATE, 3 COMPARTMENT SYSTEM (TOP ONLY)
FT2804	CHECKMATE, 4 COMPARTMENT SYSTEM (TOP ONLY)
FT2805	CHECKMATE, 5 COMPARTMENT SYSTEM (TOP ONLY)
FT2806	CHECKMATE, 6 COMPARTMENT SYSTEM (TOP ONLY)
FT2807	CHECKMATE, 7 COMPARTMENT SYSTEM (TOP ONLY)
FT2808	CHECKMATE, 8 COMPARTMENT SYSTEM (TOP ONLY)

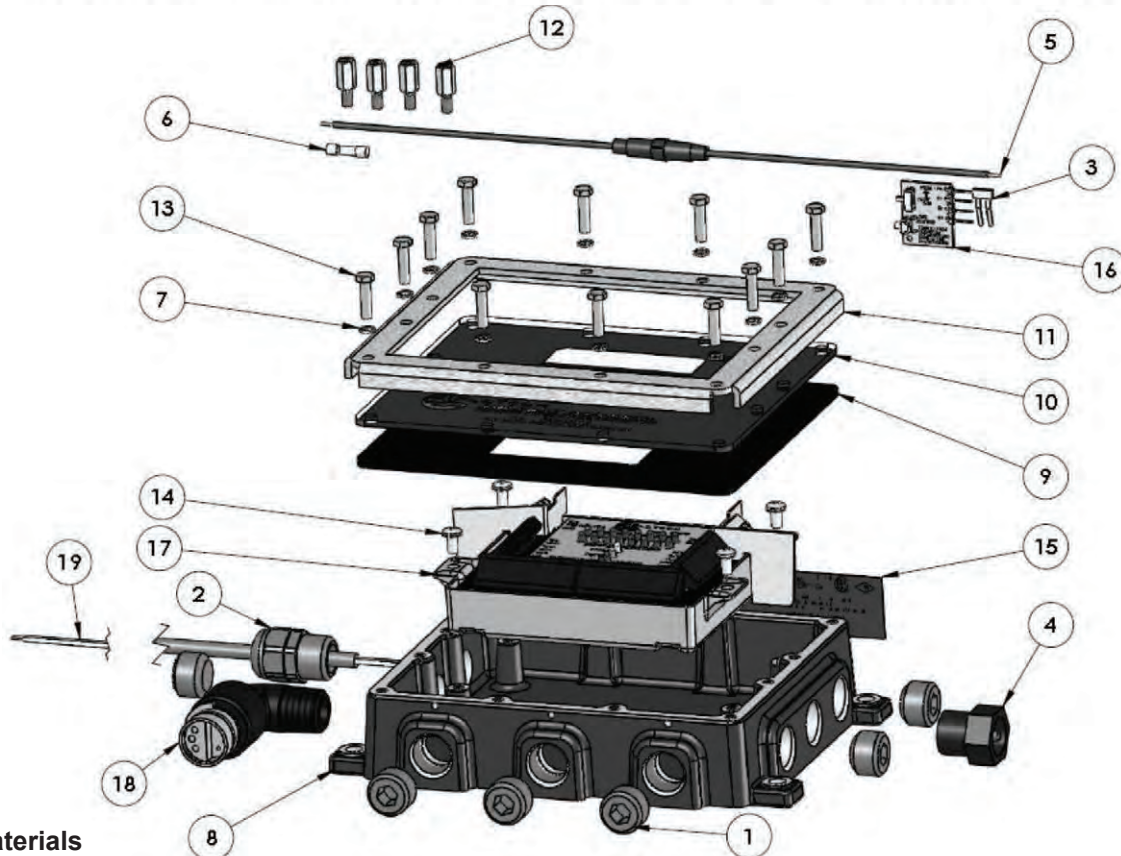
** ADD (-12) TO END OF PART NUMBER FOR 12" PROBES

SYSTEM INCLUDES	
1	FT208 MONITOR
1	FT151 OVERFILL SENSOR <u>PER COMPARTMENT</u>
	FT404 CABLE
	FT402 STRAIN RELIEFS (CABLE GLANDS)

FT 208P Series Plug-n-Play Stand Alone Monitors

CHECKMATE OVERFILL PLUG-N-PLAY SYSTEM - STAND ALONE MONITORS

PART NUMBERS	DESCRIPTION
FT208P	CHECKMATE MONITOR W/ PLUG-N-PLAY CONNECTORS, TOP OVERFILL PROTECTION ONLY
FT208PP	CHECKMATE MONITOR W/ PLUG-N-PLAY CONNECTORS, TOP OVERFILL & BOTTOM RETAIN DETECTION
FT208PPC	CHECKMATE MONITOR W/ PLUG-N-PLAY CONNECTORS, TOP OVERFILL & BOTTOM RETAIN DETECTION (CANADIAN 'B' TRAIN)



Bill of Materials

Item #	Description	Part #	FT208P	FT208PP	FT208PPC
1	polypropylene pipe plug	10103	6	4	3
2	polyamide strain relief	10139	1	1	2
3	jumper - cross connector	10196	1	1	1
4	reset switch assembly	10200A	1	1	1
5	plastic fuse holder	10356	1	1	1
6	brass/glass fuse - 1/2 amp	10358 (was FT9039)	1	1	1
7	stainless steel lock washer	10375SS	12	12	12
8	aluminum box	10430AL	1	1	1
9	neoprene gasket	10432NP (was FT9045)	1	1	1
10	acrylic bezel	10433PL	1	1	1
11	aluminum frame	10434AL	1	1	1
12	aluminum standoff (old style boxes)	10435AL	4	4	n/a
13	stainless steel screw	10436SS	12	12	12
14	stainless steel screw - stems	10437SS	4	4	4
15	chrome mylar label	10438A	1	1	1
16	programming board assembly	10459 (was FT9035)	1	1	1
17	potted OBM	10465	1	1	1
18	OBM plug elbow assy (Plug-n-Play)	10616PLBN	1	3	3
19	power cable	10639	1	1	n/a

Repair Kits

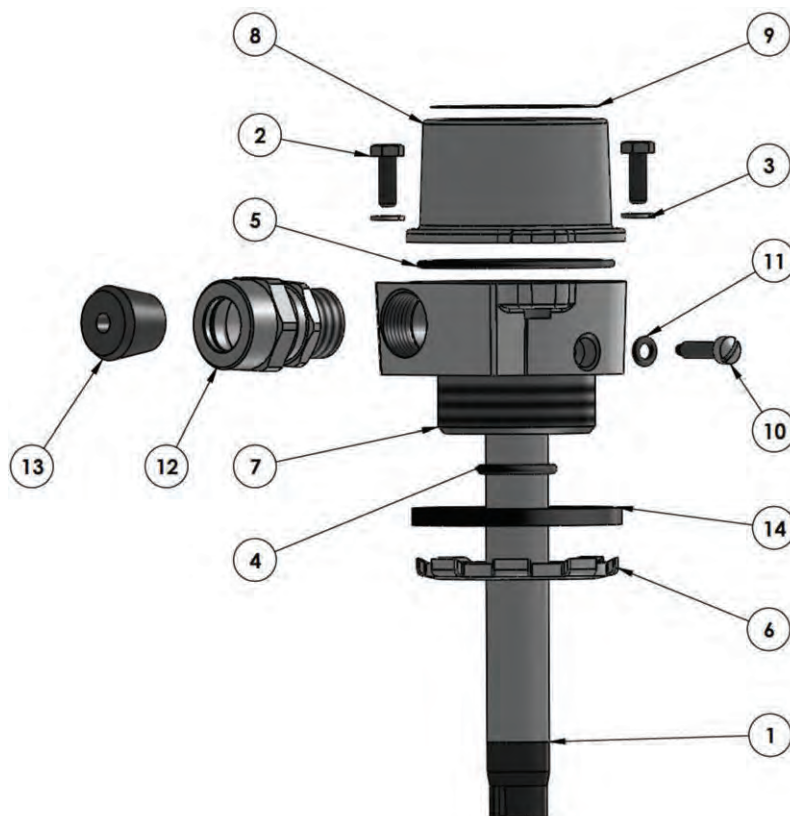
Part #	Description	Includes Item #
FT9036	replacement lid, bezel, screws & lockwashers	7, 9, 10, 11, 13
FT9040	replacement checkmate housing with lid	1, 7-14



Plug-n-Play Sensors FT151P Series, Overfill Sensor Housings

CHECKMATE OVERFILL PLUG-N-PLAY SYSTEM - OVERFILL SENSORS

PART NUMBER	DESCRIPTION
FT151P	HOUSING W/ 7" PLUG-N-PLAY OVERFILL DETECTION PROBE W/ WIRING HARNESS
FT151P-12	HOUSING W/ 12" PLUG-N-PLAY OVERFILL DETECTION PROBE W/ WIRING HARNESS
FT151P-18	HOUSING W/ 18" PLUG-N-PLAY OVERFILL DETECTION PROBE W/ WIRING HARNESS



Bill of Materials

Item #	Description	Part #	Qty
1	Plug-n-Play probe	See repair kits	1
2	stainless steel screw	10110	2
3	stainless steel lock washer - 1/4"	10111	2
4	FKM O-ring	10125 (was FT9027)	1
5	Buna O-ring	10126 (was FT9049)	1
6	steel locknut	10128 (was FT9012)	1
7	aluminum sensor housing	10183-P&P	1
8	aluminum sensor housing cap	10185	1
9	mylar label	10204	1
10	stainless steel screw with nylon insert	10212	1
11	Buna-N O-ring	10213	1
12	cord grip assembly	10248	1
13	rubber bushing	10638	1
14	Buna-N gasket	250-G-BU (was FT9026)	1

Repair Kits

Part #	Description	Includes Item #
FT150P	Replacement Plug-n-Play overfill detection probe. - 7"	1
FT150-12P	Replacement Plug-n-Play overfill detection probe. - 12"	1
FT150-18P	Replacement Plug-n-Play overfill detection probe. - 18"	1
FT9000P	Complete replacement Plug-n-Play sensor housing (without probe)	2-14
FT9001	Sensor housing gasket & O-ring kit	5, 6, 7, 13
FT9011	Sensor housing cap with screws & lock washers	2, 3, 8

Plug-n-Play Stand Alone Sockets



CHECKMATE PLUG-N- PLAY STAND ALONE SOCKET ASSEMBLIES

PART NUMBER	DESCRIPTION
FT300P	SINGLE SOCKET CONNECTOR. API OPTIC, 6 PIN 3 J-SLOTS (US)
FT300PG	SINGLE SOCKET CONNECTOR. API OPTIC, 6 PIN 3 J-SLOTS W/ INTERNAL GROUND WIRE (US)
FT301P	SINGLE SOCKET CONNECTOR. API THERMISTOR, 8 PIN 4 J-SLOT (US)
FT306P	SINGLE SOCKET CONNECTOR. OPTIC J560 TYPE
FT390PG-20	DUAL SOCKET CONNECTOR W/ 20' CABLE. API OPTIC, 6 PIN 3 J-SLOT, AND THERMISTOR, 10 PIN 4 J-SLOT. INTERNAL GROUND WIRE. GUARANTEED FOR LIFE STAINLESS WEAR RINGS INCLUDED (US)
FT394P	TRIPLE SOCKET ASSY. API OPTIC, 6 PIN 3 J-SLOT, THERMISTOR, 10 PIN 4 J-SLOT, AND OPTIC J560 TYPE. GUARANTEED FOR LIFE STAINLESS WEAR RINGS INCLUDED (US)
FT394PG	TRIPLE SOCKET ASSY. API OPTIC, 6 PIN 3 J-SLOT, THERMISTOR, 10 PIN 4 J-SLOT, AND OPTIC J560 TYPE W/ INTERNAL GROUND WIRE. GUARANTEED FOR LIFE STAINLESS WEAR RINGS INCLUDED (US)
FT394VP	VERTICAL TRIPLE SOCKET. API OPTIC, 6 PIN 3 J-SLOT THERMISTOR, 10 PIN 4 J-SLOT AND OPTIC J560 TYPE. GUARANTEED FOR LIFE STAINLESS WEAR RINGS INCLUDED (US)
FT394VPG	VERTICAL TRIPLE SOCKET. API OPTIC, 6 PIN 3 J-SLOT THERMISTOR, 10 PIN 4 J-SLOT AND OPTIC J560 TYPE W/ INTERNAL GROUND WIRE. GUARANTEED FOR LIFE STAINLESS WEAR RINGS INCLUDED (US)
FT395P-20	TRIPLE SOCKET ASSY ON 20' CABLE. OPTIC, 6 PIN 4 J-SLOTS, THERMISTOR, 10 PIN 4 J-SLOTS, AND OPTIC J560 TYPE. GUARANTEED FOR LIFE STAINLESS WEAR RINGS INCLUDED (CANADA)
FT395PG-20	TRIPLE SOCKET ASSY ON 20' CABLE. OPTIC, 6 PIN 4 J-SLOTS, THERMISTOR, 10 PIN 4 J-SLOTS, AND OPTIC J560 TYPE. WITH INTERNAL GROUND WIRE. GURANTEED FOR LIFE STAINLESS WEAR RINGS INCLUDED. (CANADA)
FT391P-20	DUAL SOCKET CONNECTOR W/ 4 J-SLOTS, 20' CABLE
FT391PG-20	DUAL SOCKET CONNECTOR W/ 4 J-SLOTS & INTERNAL GROUND WIRE, 20' CABLE



FloTech R/OM Type Overfill Detection Systems (Top Detection Only)



FloTech brand overfill system kits provide everything needed to install a new overfill system on your tank. One to six compartment kits are available from our inventory. Other probe lengths are available.

R/OM TYPE OVERFILL DETECTION SYSTEM

PART NUMBER	DESCRIPTION
FT2101	R/OM TYPE, 1 COMPARTMENT (TOP ONLY)
FT2102	R/OM TYPE, 2 COMPARTMENT (TOP ONLY)
FT2103	R/OM TYPE, 3 COMPARTMENT (TOP ONLY)
FT2104	R/OM TYPE, 4 COMPARTMENT (TOP ONLY)
FT2105	R/OM TYPE, 5 COMPARTMENT (TOP ONLY)
FT2106	R/OM TYPE, 6 COMPARTMENT (TOP ONLY)
** ADD (-12) TO END OF PART NUMBER FOR 12" PROBES	

SYSTEM INCLUDES	
1	FT204P MONITOR
1	FT202 OVERFILL SENSOR <u>PER COMPARTMENT</u>
	FT401 CABLE
	FT402 STRAIN RELIEFS (CABLE GLANDS)

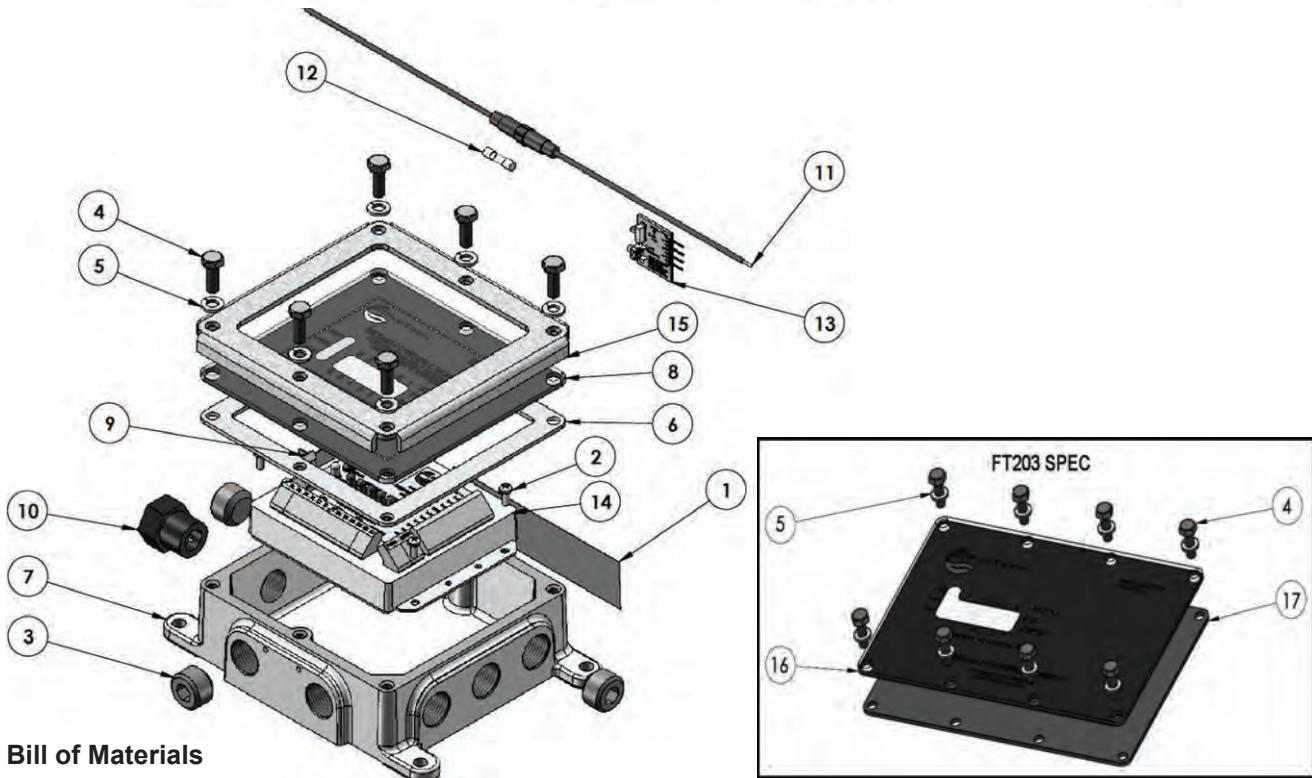
** SOCKETS, INLINE FUSE & INSTRUCTIONS
SOLD SEPERATLEY



FT203 Series R/OM Type Red & Black 2 Wire, Onboard Monitor

CHECKMATE R/OM TYPE ONBOARD MONITORS

PART NUMBER	DESCRIPTION
FT204P	PROGRAMABLE MONITOR & HOUSING
FT203P	PROGRAMABLE REPLACEMENT MONITOR ONLY (NO HOUSING)
FT203PSPEC	PROGRAMABLE REPLACEMENT MONITOR W/ 8-HOLE COVER (NO HOUSING)



Bill of Materials

Item #	Description	Part #	FT203P	FT203SPEC	FT204P
1	chrome mylar label	10078	n/a	n/a	1
2	stainless steel screw	10086	4	4	4
3	polypropylene pipe plug	10103	n/a	n/a	3
4	stainless steel screw	10110	6	8	6
5	stainless steel lock washer - 1/4"	10111	6	8	6
6	neoprene gasket	10131 (was FT9053)	1	n/a	1
7	aluminum onboard monitor housing	10136	n/a	n/a	1
8	acrylic bezel	10143 (was FT9006)	1	n/a	1
9	jumper - cross connector	10196	1	1	1
10	reset switch assembly	10200A	n/a	n/a	1
11	plastic fuse holder	10356	1	1	1
12	brass/glass fuse - 1/2 amp	10358 (was FT9039)	1	1	1
13	programming board assembly	10459 (was FT9035)	1	1	1
14	OBM assy potted	10460	1	1	1
15	aluminum frame lid	10470AL (was FT9054)	1	n/a	1
16	bezel for Civacon 3250 & 3252 boxes	10520PL	n/a	1	n/a
17	neoprene gasket for 10520PL	10521NP (was FT9065)	n/a	1	n/a

Repair Kits

Part #	Description	Includes Item #
FT9003	replacement monitor housing	2-8, 15
FT9004	replacement monitor hardware kit	4-6, 8, 15
FT9031	replacement fuse holder with 1/2 amp fuse	11, 12
FT9059	replacement faceplate and bezel for FT204P	4, 5, 6, 8, 15
FT9064	replacement gasket and bezel for FT203 SPEC	16, 17

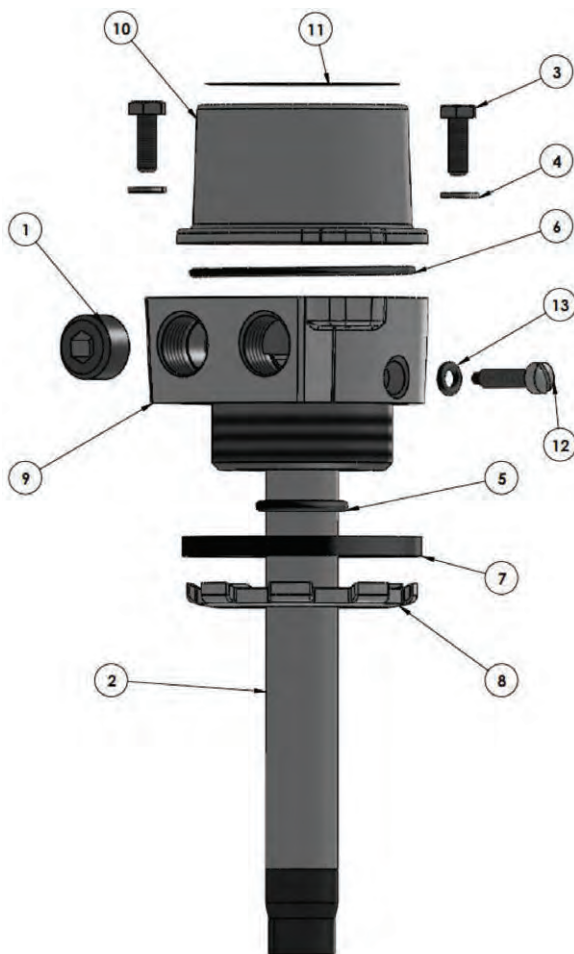
5-24

www.wertswelding.com

FT202 Series Overfill Sensor Housings

R/OM TYPE RED & BLACK WIRE SYSTEM - OVERFILL SENSORS

PART NUMBER	DESCRIPTION
FT202	HOUSING W/ 7" RED AND BLACK 2 WIRE OVERFILL DETECTION PROBE
FT202-12	HOUSING W/ 12" RED AND BLACK 2 WIRE OVERFILL DETECTION PROBE
FT202-18	HOUSING W/ 18" RED AND BLACK 2 WIRE OVERFILL DETECTION PROBE



Bill of Materials

Item #	Description	Part #	Qty
1	polypropylene pipe plug	10103	1
2	probe	see repair kits	1
3	stainless steel screw	10110	2
4	stainless steel lock washer - 1/4"	10111	2
5	FKM O-ring	10125 (was FT9027)	1
6	Buna O-ring	10126 (was FT9049)	1
7	Buna-n gasket	250-G-BU (was FT9026)	1
8	steel lock nut	10128 (was FT9012)	1
9	aluminum sensor housing	10183 (was FT9033)	1
10	aluminum sensor housing cap	10185	1
11	mylar label - overfill sensor	10203	1
12	stainless steel screw with nylon insert	10212	1
13	Buna-N O-ring	10213	1

Repair Kits

Part #	Description	Includes Item #
FT100	Replacement 5 wire overfill detection probe. -7"	2
FT100-12	Replacement 5 wire overfill detection probe. -12"	2
FT100-18	Replacement 5 wire overfill detection probe. -18"	2
FT150	Replacement black & white 2 wire overfill detection probe. - 7"	2
FT150-12	Replacement black & white 2 wire overfill detection probe. - 12"	2
FT150-18	Replacement black & white 2 wire overfill detection probe. - 18"	2
FT201	Replacement red & black 2 wire overfill detection probe. - 7"	2
FT201-12	Replacement red & black 2 wire overfill detection probe. - 12"	2
FT201-18	Replacement red & black 2 wire overfill detection probe. - 18"	2
FT9000	Complete replacement sensor housing (without probe)	1, 3 -13
FT9001	Sensor housing gasket & O-ring kit	5-7, 13
FT9002	Sensor housing gasket, O-ring & hardware kit	1, 3-8, 12, 13
FT9011	Sensor housing cap with screws & lock washers	3, 4, 10

Single Sockets



FT300



FT301



FT302

SINGLE SOCKETS WITH ALUMINUM HARDCOAT J SLOT

PART NUMBER	DESCRIPTION
FT300	OPTIC SOCKET API / WOGA, 6 PIN & 3 J-SLOT (US)
FT303	OPTIC SOCKET, 6 PIN & 4 J-SLOT (US)
FT307	OPTIC SOCKET, 6 PIN & 4 J-SLOT (CA)
FT306	OPTIC SOCKET, J560 PIN TYPE
FT301	THERMISTOR SOCKET, API, 8 PIN & 4 J-SLOT (US)
FT304	THERMISTOR SOCKET, 10 PIN & 4 J-SLOTS (CA, EU)
FT305	THERMISTOR SOCKET, J560 PIN TYPE
FT302	FLOAT, API, J560 PIN TYPE
REPLACEMENT FACE PLATES AND DUST CAPS	
FT310	API OPTIC FACE PLATE ASSY., 6 PIN 3 J-SLOT (US)
FT313	OPTIC PATTERN CONTACT ASSY. W/ THERMISTOR, 6 PIN 4 J-SLOT (US)
FT317	OPTIC PATTERN FACE PLATE ASSY., 6 PIN, 4 J-SLOTS (CA)
FT316	OPTIC REPLACEMENT FACE PLATE, J560 TYPE
FT311	API THERMISTOR FACE PLATE ASSY., 8 PIN, 4 J-SLOTS (US)
FT314	THERMISTOR FACE PLATE ASSY., 10 PIN 4 J-SLOTS (CANADA, EUROPE)
FT315	THERMISTOR REPLACEMENT FACE PLATE, J560 TYPE
FT320	REPLACEMENT BLUE OPTIC DUST CAP
FT321	REPLACEMENT GREEN THERMISTOR DUST CAP

Single Sockets with GFL (Guaranteed for Life) Stainless Steel J Slot Wear Rings

SINGLE SOCKETS W/ GUARANTEED FOR LIFE STAINLESS STEEL J SLOT WEAR RINGS

PART NUMBER	DESCRIPTION
FT300SS	OPTIC SOCKET API / WOGA, 6 PIN & 3 J-SLOT, GFL WEAR RING (US)
FT303SS	OPTIC SOCKET, 6 PIN & 4 J-SLOTS, GFL WEAR RING (US)
FT307SS	OPTIC SOCKET, 6 PIN & 4 J-SLOTS, GFL WEAR RING (CA)
FT301SS	THERMISTOR SOCKET, API, 8 PIN & 4 J-SLOTS, GFL WEAR RING (US)
FT313SS	THERMISTOR SOCKET, 10 PIN & 4 J-SLOT, GFL WEAR RING (CA, EU)
REPLACEMENT FACE PLATES AND DUST CAPS	
FT310SS	API OPTIC FACE PLATE ASSY., 6 PIN, 3 J-SLOTS, GFL WEAR RING (US)
FT313SS	OPTIC PATTERN CONTACT ASSY., 6 PIN, 4 J-SLOT, GFL WEAR RING (US)
FT317SS	OPTIC PATTERN FACE PLATE ASSY., 6 PIN, 4 J-SLOT, GFL WEAR RING (CA)
FT311SS	API THERMISTOR FACE PLATE ASSY., 8 PIN, 4 J-SLOTS, GFL WEAR RING (US)
FT314SS	THERMISTOR FACE PLATE ASSY., 10 PIN, 4 J-SLOTS, GFL WEAR RING (CA, EU)
FT320	REPLACEMENT BLUE OPTIC DUST CAP
FT321	REPLACEMENT GREEN THERMISTOR DUST CAP



EZ-Cept Double Sockets



FT390

EZ-CEPT DOUBLE SOCKETS

PART NUMBER	DESCRIPTION
FT390	OPTIC 6 PIN, 3 J-SLOT, AND THERMISTOR 10 PIN, 4 J-SLOT, HORIZONTAL MOUNT, GFL WEAR RING (US)
FT390V	OPTIC 6 PIN, 3 J-SLOT, AND THERMISTOR 10 PIN, 4 J-SLOT, VERTICAL MOUNT, GFL WEAR RING (US)
FT390G	OPTIC 6 PIN, 3 J-SLOT, AND THERMISTOR 10 PIN, 4 J-SLOT, HORIZONTAL MOUNT, GFL WEAR RING, INTERNAL GROUND WIRE (US)
FT390GT	OPTIC 6 PIN, 3 J-SLOT, AND THERMISTOR 10 PIN, 4 J-SLOT, HORIZONTAL MOUNT, GFL WEAR RING, INTERNAL GROUND WIRE. T.I.M CHIP (US)
FT390T	OPTIC 6 PIN, 3 J-SLOT, AND THERMISTOR 10 PIN, 4 J-SLOT, HORIZONTAL MOUNT, GFL WEAR RING, T.I.M. CHIP (US)
FT390-20	OPTIC 6 PIN, 3 J-SLOT, AND THERMISTOR 10 PIN, 4 J-SLOT, HORIZONTAL MOUNT, GFL WEAR RING, 20' OF CABLE (US)
FT390G-20	OPTIC 6 PIN, 3 J-SLOT, AND THERMISTOR 10 PIN, 4 J-SLOT, HORIZONTAL MOUNT, GFL WEAR RING, INTERNAL GROUND WIRE, 20' OF CABLE (US)
FT391	OPTIC 6 PIN, 4 J-SLOT, AND THERMISTOR 10 PIN, 4 J-SLOT, HORIZONTAL MOUNT, GFL STAINLESS WEAR RING (CANADA)
FT391V	OPTIC 6 PIN, 4 J-SLOT, AND THERMISTOR 10 PIN, 4 J-SLOT, VERTICAL MOUNT, GFL STAINLESS WEAR RING (CANADA)

FloTech Trailer Identification Module



#FT470

Grounding Bolt



#FT450

FloTech Truck Tester



#FT555

Reads TIM modules and displays the serial number on the screen
 Auto mode allows all four tests, or any combo, to run a complete test on the trailer
 LCD screen displays the final test results and a pass/fail indication for easy rapid testing of the overfill system
 One man "Wet Test" feature FT555 signal an audible alarm sounding a number of beeps that match the wetted sensor
 Microprocessor controlled with designed in flexibility to expand into a number of applications
 Requires two D cell batteries that can be changed through a side battery access door.

Competitor Cross Reference Chart

Liquid Level Sensors	FloTech Part #	Civacon Part #	Scully Part #	Description
	FT100	1302-007	9209	Replacement probe, optic, 5-wire, 7" long
	FT100-12	1302-0012	9214	Replacement probe, optic, 5-wire, 12" long
	FT100-18	1302-0018	---	Replacement probe, optic, 5-wire, 18" long
	FT100S	1410RS-0060	---	Replacement stainless steel probe, optic, 5-wire, 7" long
	FT101	1112-007 / 1110-007	9208	Sensor, optic, 5-wire, 2" NPT housing, 7" probe
	FT101-12	1112-0012 / 1110-0012	9213	Sensor, optic, 5-wire, 2" NPT housing with 12" probe
	FT101-18	1112-0018 / 1110-0018	---	Sensor, optic, 5-wire, 2" NPT housing with 18" probe
	FT150	1651-007	9409	Replacement probe, thermo-optic, 7" long, 2-wire (black and white)
	FT150-12	1651-0012	9414	Replacement probe, thermo-optic, 12" long, 2-wire (black and white)
	FT150-18	1651-0018	---	Replacement probe, thermo-optic, 18" long, 2-wire (black and white)
	FT151	1551-007	9408	Sensor, thermo-optic, 2" NPT housing, 7" probe, 2-wire (black and white)
	FT151-12	1551-0012	9413	Sensor, thermo-optic, 2" NPT housing, 12" probe, 2-wire (black and white)
	FT151-18	1551-0018	---	Sensor, thermo-optic, 2" NPT housing, 18" probe, 2-wire (black and white)
	FT151RL	1554-007	---	Sensor, ROM Link replacement thermo-optic, 2" NPT housing, 7" probe, 2-wire (black and white)
	FT151RL-12	1554-012	---	Sensor, ROM Link replacement thermo-optic, 2" NPT housing, 12" probe, 2-wire (black and white)
	FT152	---	8819	Thermo optic retain sensor (black and white)
	FT155	1920-5	08298 & 08542	Thermistor dummy, 5 compartment
	FT201	1351-007	---	Replacement R/OM type, 7" top probe, 2-wire (red and black)
	FT201-12	1351-0012	---	Replacement R/OM type, 12" top probe, 2-wire (red and black)
	FT201-18	1351-0018	---	Replacement R/OM type, 18" top probe, 2-wire (red and black)
	FT202	1057-007	---	Top sensor R/OM type, 2" NPT housing, 7" probe, 2-wire (red and black)
	FT202-12	1057-0012	---	Top sensor R/OM type, 2" NPT housing, 12" probe, 2-wire (red and black)
	FT202-18	1057-0018	---	Top sensor R/OM type, 2" NPT housing, 18" probe, 2-wire (red and black)
	FT206	1000R & 1001R	---	Retain sensor R/OM type, 1/2" NPT sensor (red & black)
	FT9000	1355-1355 & 1455-1455	---	Probe housing
On-Board Monitors	FloTech Part #	Civacon Part #	Scully Part #	Description
	FT102	3150-3150	8563	Replacement module API compatible
	FT103	3100-3100	8687	API compatible on-board monitor, with housing
	FT203P	3252-3252	---	Replacement module, R/OM type on-board monitor
	FT203PSPEC	3250 & 3252	---	Replacement module, R/OM type on-board monitor with 8 hole cover and frame
	FT204P	3202-3202 & 3202R-3202	---	R/OM type on-board monitor, with housing
	FT207	---	09100 or 09111	Replacement module, Checkmate on-board monitor
	FT208	---	09109 or 09107	Checkmate programmable monitor for top, or top and bottom sensors

Competitor Cross Reference Chart (continued)

Sockets	FloTech Part #	Civacon Part #	Scully Part #	Description
	FT300	4103-4103	7974	API compatible optic socket with cap (6 pin, 3 J-slots)
	FT301	4400-4400	7720	API compatible thermistor socket with cap (8 pin, 2/4 J-slots)
	FT302	4600-4600	8116	API compatible float socket
	FT303	4201-4201	7976	Optic pattern with thermistor J-slots, and cap (6 pin, 2/4 J-slots) (U.S.)
	FT304	4403-4403	7716	Canadian / European thermistor socket with cap (10 pin, 4 J-slots)
	FT305	4500-4500	7681	Thermistor socket, J560 type
	FT306	4300-4300	8199	Optic socket, J560 type
	FT307	4201-4201	7976	Optic pattern with thermistor J-slots, and cap (6 pin, 2/4 J-slots) (Canada)
	FT310	4110-4110	21790	API optic face plate assembly with cap
	FT311	4111-4111	20770	API thermistor face plate assembly with cap
	FT314	---	20768	Canadian / European thermistor replacement face plate with cap
	FT320	4150-4150	8575	Blue optic dust cap
	FT321	4450-4450	8574	Green thermistor dust cap
	FT390	4820L & 4820R	9060	EZ-Cept dual socket assembly
	FT390G	4822L & 4822R	---	EZ-Cept dual socket assembly with ground bolt
Hardware & Systems Testers	FloTech Part #	Civacon Part #	Scully Part #	Description
	FT400	2100-2100	22056	5 conductor cable 100'
	FT400-500	2200-2200	---	5 conductor cable 500'
	FT401	2310-2310	27382	7 conductor cable 100'
	FT401-1000	2401-2401	---	7 conductor cable 1000'
	FT401-150	2300-2300	---	7 conductor cable 150'
	FT402	2510-2510	---	20 strain relief fittings, 1/2" NPT
	FT403	2530-2530	---	30 strain relief fittings, 1/2" NPT
	FT450	GS1000	8560	Stainless steel grounding bolt
	FT451	---	8274	Stainless steel grounding ball
	FT470	---	08836	TI module
	FT520	1391-1391	---	Optic system tester
	FT521	1396-1396	---	API optic test plug, six pins & 3 J slots
	FT522	1395-1395	---	Optic test plug, six pins & 2 or 4 J slots (plug fits both 2 & 4 J slot sockets)
	FT523	1397-1397	---	Optic test plug J560 type
	FT555	---	08938	Truck tester
API Rack Cords	FloTech Part #	Civacon Part #	Scully Part #	Description
	FT600	7320	21818	API Thermistor green plug with 8 contact pins for 2 or 4 J slots, on a 30' coiled orange cable (US).
	FT601	7310	20769	Replacement green plug only with 8 contact pins for 2 or 4 J slots (US)
	FT601-10	---	20767	Replacement green plug only with 10 contact pins and 4 J slots (Canada)
	FT602	---	30197	Replacement 30' coiled cable
	FT620	---	21831	API Optic Blue plug with 6 contact pins and 3 J slots, on a 30' coiled orange cable (US)
	FT621	---	21766	Replacement blue plug only with 6 contact pins and 3 J slots (US)
	FT622	---	31099	Replacement 30' coiled cable
	FT623	---	8235	Plug hanger

Competitor Cross Reference Chart (continued)

On-Board Systems	FloTech Part #	Civacon Part #	Scully Part #	Description
	FT1001	2001-2001	---	API compatible 1 compartment system 7" probe
	FT1001-12	2001S-0012	---	API compatible 1 compartment system 12" probe
	FT1002	2002-2002	---	API compatible 2 compartment system 7" probes
	FT1002-12	2002S-0012	---	API compatible 2 compartment system 12" probes
	FT1003	2003-2003	---	API compatible 3 compartment system 7" probes
	FT1003-12	2003S-0012	---	API compatible 3 compartment system 12" probes
	FT1004	2004-2004	8305	API compatible 4 compartment system 7" probes
	FT1004-12	2004S-0012	---	API compatible 4 compartment system 12" probes
	FT1005	2005-2005	8306	API compatible 5 compartment system 7" probes
	FT1005-12	2005S-0012	---	API compatible 5 compartment system 12" probes
	FT1006	2006-2006	---	API compatible 6 compartment system 7" probes
	FT1006-12	2006S-0012	---	API compatible 6 compartment system 12" probes
	FT2001	3021-3021	---	R/OM type, 1 compartment system, overflow & retain, 7" probe
	FT2001-12	3021S-0012	---	R/OM type, 1 compartment system, overflow & retain, 12" probe
	FT2002	3022-3022	---	R/OM type, 2 compartment system, overflow & retain, 7" probes
	FT2002-12	3022S-0012	---	R/OM type, 2 compartment system, overflow & retain, 12" probes
	FT2003	3023-3023	---	R/OM type, 3 compartment system, overflow & retain, 7" probes
	FT2003-12	3023S-0012	---	R/OM type, 3 compartment system, overflow & retain, 12" probes
	FT2004	3024-3024	---	R/OM type, 4 compartment system, overflow & retain, 7" probes
	FT2004-12	3024S-0012	---	R/OM type, 4 compartment system, overflow & retain, 12" probes
	FT2005	3025-3025	---	R/OM type, 5 compartment system, overflow & retain, 7" probes
	FT2005-12	3025S-0012	---	R/OM type, 5 compartment system, overflow & retain, 12" probes
	FT2006	3026-3026	---	R/OM type, 6 compartment system, overflow & retain, 7" probes
	FT2006-12	3026S-0011	---	R/OM type, 6 compartment system, overflow & retain, 12" probes
	FT2101	3031-3031	---	R/OM type, 1 compartment system, overflow only, 7" probe
	FT2101-12	3031S-0012	---	R/OM type, 1 compartment system, overflow only, 12" probe
	FT2102	3032-3032	---	R/OM type, 2 compartment system, overflow only, 7" probes
	FT2102-12	3032S-0012	---	R/OM type, 2 compartment system, overflow only, 12" probes
	FT2103	3033-3033	---	R/OM type, 3 compartment system, overflow only, 7" probes
	FT2103-12	3033S-0012	---	R/OM type, 3 compartment system, overflow only, 12" probes
	FT2104	3034-3034	---	R/OM type, 4 compartment system, overflow only, 7" probes
	FT2104-12	3034S-0012	---	R/OM type, 4 compartment system, overflow only, 12" probes
	FT2105	3035-3035	---	R/OM type, 5 compartment system, overflow only, 7" probes
	FT2105-12	3035S-0012	---	R/OM type, 5 compartment system, overflow only, 12" probes
	FT2106	3036-3036	---	R/OM type, 6 compartment system, overflow only, 7" probes
	FT2106-12	3036S-0012	---	R/OM type, 6 compartment system, overflow only, 12" probes
	FT2801	---	8251	Checkmate system, 1 compartment system, overflow only, 7" probe
	FT2802	---	8352	Checkmate system, 2 compartment system, overflow only, 7" probes
	FT2803	---	8353	Checkmate system, 3 compartment system, overflow only, 7" probes
	FT2804	---	8354	Checkmate system, 4 compartment system, overflow only, 7" probes
	FT2805	---	8355	Checkmate system, 5 compartment system, overflow only, 7" probes

Competitor Cross Reference Chart (continued)

On-Board Systems	FloTech Part #	Civacon Part #	Scully Part #	Description
	FT2806	---	8356	Checkmate system, 6 compartment system, overfill only, 7" probes
	FT2807	---	8380	Checkmate system, 7 compartment system, overfill only, 7" probes
	FT2808	---	8381	Checkmate system, 8 compartment system, overfill only, 7" probes
	FT2811	---	8361	Checkmate system, 1 compartment system, overfill & retain, 7" probe
	FT2812	---	8362	Checkmate system, 2 compartment system, overfill & retain, 7" probes
	FT2813	---	8363	Checkmate system, 3 compartment system, overfill & retain, 7" probes
	FT2814	---	8364	Checkmate system, 4 compartment system, overfill & retain, 7" probes
	FT2815	---	8365	Checkmate system, 5 compartment system, overfill & retain, 7" probes
	FT2816	---	8366	Checkmate system, 6 compartment system, overfill & retain, 7" probes
	FT2817	---	8382	Checkmate system, 7 compartment system, overfill & retain, 7" probes
	FT2818	---	8383	Checkmate system, 8 compartment system, overfill & retain, 7" probes