

New Addition!

Section 11 **Internet only*

Lighting Systems & Accessories



"Making the Best Better Worldwide"





Betts



Quality
Since 1901

***heavy duty
vehicular lamps
and lighting systems***



Clearance & Side Marker Lamps

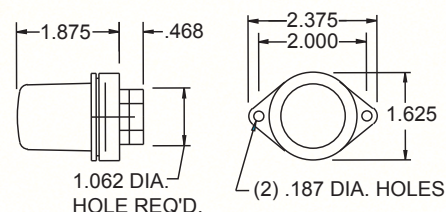


PART NO.

240011

240012

Features a 920053 red or 920054 amber deep lens. Lamp uses a 67 bulb. Lamps have a 1/4" N.P.T. rear entry. Surface mount lamp with a 1.062 diameter wire entrance hole required.



COMBINATION CLEARANCE & SIDE MARKER SINGLE CONTACT

Red, incandescent bulb, aluminum body
Amber, incandescent bulb, aluminum body



PART NO.

500052

500053

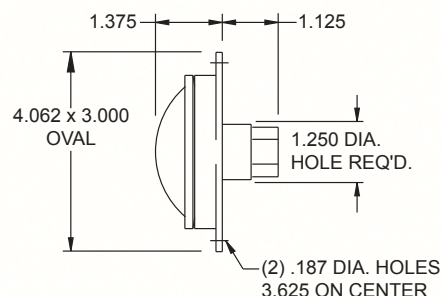
Available in either incandescent or LED. Lamps have a 1/4" N.P.T. rear entry, surface mount.

ALL B50 series valox direct aluminum replacement lamps have a ground strap that utilizes the base as a ground like an aluminum base lamp.

Incandescent lamps feature a 920109 red or 920110 amber shallow lens and use a 67 bulb in a single contact socket.

B50 replacement LED lamps use a 510007 red or a 510008 amber shallow single contact bulb base socket lens assembly.

LED lamps feature a 510001 red or 510002 amber shallow lens assembly with two eyelets and require internal grounding.



COMBINATION CLEARANCE & SIDE MARKER SINGLE CONTACT SHALLOW LENS

Red, B50 replacement, incandescent bulb, valox body with ground strap
Amber, B50 replacement, incandescent bulb, valox body with ground strap

PART NO.

500252

500253

500452

500453

CLEARANCE OR SIDE MARKER SINGLE CONTACT SHALLOW LENS

Red, B50 replacement, LED, valox body with ground strap
Amber, B50 replacement, LED, valox body with ground strap
Red, LED, valox body
Amber, LED, valox body

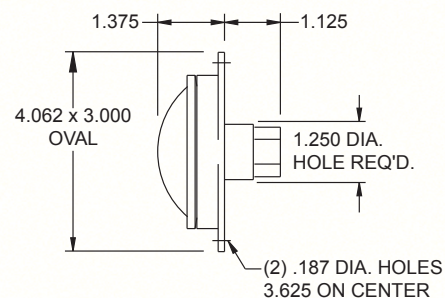


Special purpose double contact lamp shallow lens LED surface mount lamp. Lamps have a 1/4" N.P.T. rear entry.

All B50 series valox direct aluminum replacement lamps have a ground strap that utilizes the base as a ground like an aluminum base lamp.

B50 series aluminum direct valox replacement LED lamps feature a double contact bulb based 510027 red or 510028 amber shallow lens.

LED lamps feature a 510021 red or 510022 amber shallow lens assembly with three eyelets and require internal grounding.



PART NO.

500263

500264

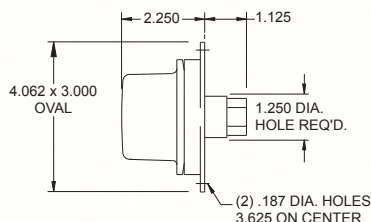
500463

500464

SPECIAL PURPOSE DOUBLE CONTACT SHALLOW LENS

Red, B50 replacement, LED, valox body with ground strap
Amber, B50 replacement, LED, valox body with ground strap
Red, LED, valox body
Amber, LED, valox body

Clearance & Side Marker Lamps



Available in either incandescent or LED, surface mount. Lamps have a 1/4" N.P.T. rear entry, surface mount lamp.

All B50 series valox direct aluminum replacement lamps have a ground strap that utilizes the base as a ground like an aluminum base lamp.

Incandescent lamps feature a 920116 red or 920117 amber deep lens and use a 67 bulb in a single contact socket.

B50 replacement LED lamps use a 510017 red or 510018 amber deep single contact bulb based socket lens assembly.

LED lamps feature a 510011 red or 510012 amber deep lens assembly with two eyelets and require internal grounding.



PART NO.

500054

500055

COMBINATION CLEARANCE & SIDE MARKER SINGLE CONTACT DEEP LENS

Red, B50 replacement, incandescent bulb, valox body with ground strap

Amber, B50 replacement, incandescent bulb, valox body with ground strap

PART NO.

500254

500255

500454

500455

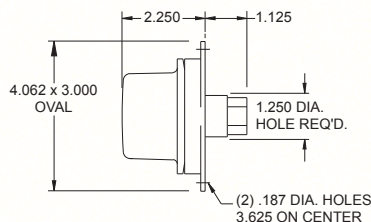
CLEARANCE OR SIDE MARKER SINGLE CONTACT DEEP LENS

Red, B50 replacement, LED, valox body with ground strap

Amber, B50 replacement, LED, valox body with ground strap

Red LED, valox body

Amber, LED, valox body



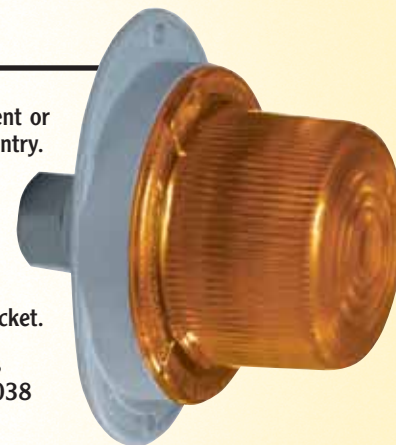
Special purpose double contact lamp deep lens incandescent or LED surface mount lamp. Lamps have a 1/4" N.P.T. rear entry.

All B50 series valox direct aluminum replacement lamps have a ground strap that utilizes the base as a ground like an aluminum base lamp.

Incandescent lamps feature a 920116 red or 920117 amber deep lens and a 1157 bulb in a double contact socket.

B50 series aluminum direct valox replacement LED lamps feature a double contact bulb based 510037 red or 510038 amber deep lens.

LED lamps features a 510031 red or 510032 amber deep lens assembly with three eyelets and require internal grounding.



PART NO.

500058

500059

SPECIAL PURPOSE INCANDESCENT DOUBLE CONTACT DEEP LENS

Red, B50 replacement, incandescent bulb, valox body with ground strap

Amber, B50 replacement, incandescent bulb, valox body with ground strap

PART NO.

500258

500259

500458

500459

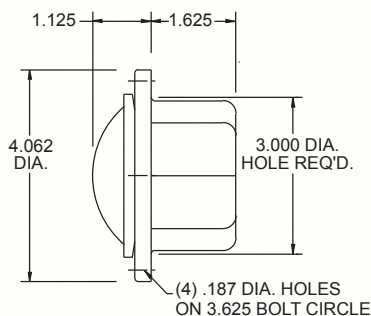
SPECIAL PURPOSE LED DOUBLE CONTACT DEEP LENS

Red, B50 replacement, LED, valox body with ground strap

Amber, B50 replacement, LED, valox body with ground strap

Red LED, valox body

Amber, LED, valox body



All B56 series valox direct aluminum replacement lamps have a ground strap that utilizes the base as a ground like an aluminum base lamp.

Incandescent lamps feature a 920109 red or a 920110 amber shallow lens and use a 920105 single contact socket and a 67 bulb.

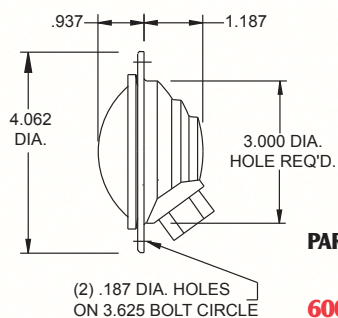
B56 replacement LED lamps use a 510007 red or a 510008 amber shallow single contact bulb base socket lens assembly.

LED lamps feature a 510001 red or 510002 amber shallow lens with two eyelets and require internal grounding.



CONTINUED ON NEXT PAGE

Clearance & Side Marker Lamps



PART NO.

600011
600012

600211
600212

Incandescent version features a 920109 red or a 920110 amber shallow lens. Uses a single contact bulb socket 920125 and a 67 single contact bulb.

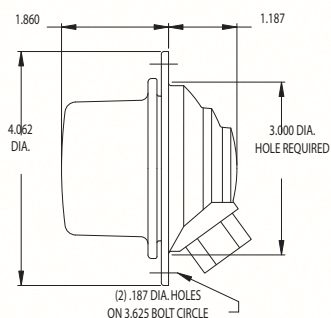
The shallow lens LED version uses a single contact bulb base 510007 red or 510008 amber LED lens assembly.

Provided with a 1/4" N.P.T. threaded entry. Recess mount.

CLEARANCE OR SIDE MARKER SINGLE CONTACT SHALLOW LENS

Red shallow, aluminum body
Amber shallow, aluminum body

Red shallow, LED aluminum body
Amber shallow, LED aluminum body



PART NO.

600013
600014

600213
600214

600215
600216

A special purpose lamp featuring a 920116 red or 920117 amber deep lens. Uses a double contact bulb socket 920126 and a 1157 bulb.

The LED version is available in either a shallow or a deep lens.

The deep lens lamp uses a double contact bulb base 510037 red or a 510038 amber LED lens assembly. The shallow lens lamp uses a double contact bulb base 510027 red or a 510028 amber LED lens assembly.

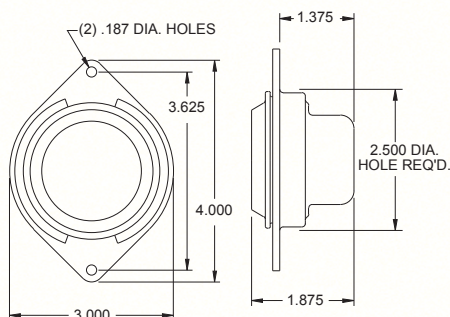
Provided with a 1/4" N.P.T. threaded entry. Recess mount.

SPECIAL PURPOSE DOUBLE CONTACT DEEP LENS

Red deep lens, aluminum body
Amber deep lens, aluminum body

Red deep, LED lens, aluminum body
Amber deep, LED lens, aluminum body

Red shallow, LED lens, aluminum body
Amber shallow, LED lens, aluminum body



PART NO.

650001
650002

650201
650202
651201
651202

Incandescent bulb version features a 920228 red or a 920229 amber shallow lens and is available in a gray or black valox body. The 168 single contact bulb is mounted in a shock mount assembly for longer life. Provided with (1) or (2) 920413 watertight and vapor proof choke seals.

The LED version is available in the same body colors and entrance configurations. It uses a 660001 red or a 660002 amber LED lens assembly. Recess mount.

See page 68 & 69 for mounting bracket.

CLEARANCE OR SIDE MARKER SINGLE CONTACT TWO SIDE ENTRANCES

Red, gray valox body
Amber, gray valox body
Red LED, gray valox body
Amber LED, gray valox body
Red LED, black valox body
Amber LED, black valox body



PART NO.

CLEARANCE OR SIDE MARKER SINGLE CONTACT ONE REAR ENTRANCE

650007
650008
650207
650208
651207
651208

Red, gray valox body
Amber, gray valox body
Red, LED, gray valox body
Amber LED, gray valox body
Red LED, black valox body
Amber LED, black valox body

Clearance & Side Marker Lamps



PART NO.

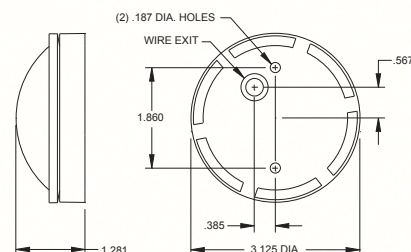
100011
100012

A conventional grommet entry lamp with a shallow lens. Uses a 67 single contact bulb and 910109 red or 910110 amber lens. Surface mount.

COMBINATION CLEARANCE & SIDE MARKER SINGLE CONTACT

Red, aluminum body
Amber, aluminum body

NOTE: LED available on request

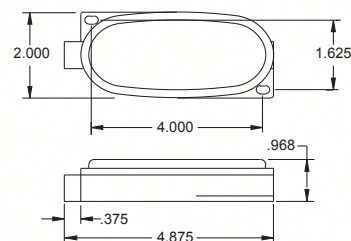


A low profile incandescent bulb version that features a 920049 red or 920050 amber lens. Lamp uses a 67 single contact bulb.

LED version features a 201201 red or 201202 amber LED lens assembly.

Surface mount, can be mounted horizontally or vertically.

All lamps are single contact.



PART NO.

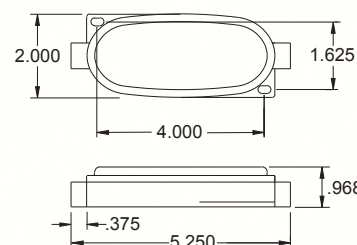
200011
200012

CLEARANCE OR SIDE MARKER ONE 1/8" N.P.T. END ENTRANCE

Red, aluminum body
Amber, aluminum body

200211
200212

Red LED, aluminum body
Amber LED, aluminum body



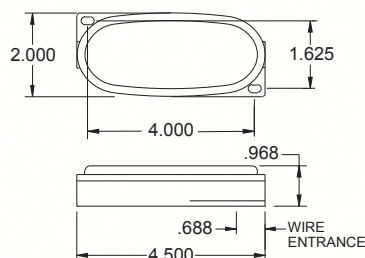
TWO 1/8" N.P.T. END ENTRANCES

210001
210002

Red, aluminum body
Amber, aluminum body

210201
210202

Red LED, aluminum body
Amber LED, aluminum body



211001
211002

ONE 1/4" N.P.T. REAR ENTRANCE

Red, aluminum body
Amber, aluminum body

211201
211202

Red LED, aluminum body
Amber LED, aluminum body

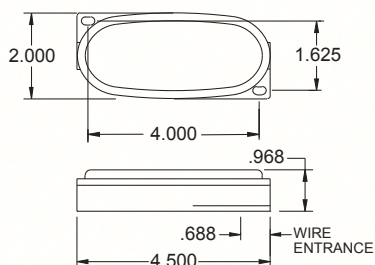
TWO 1/4" N.P.T. REAR ENTRANCES

212001
212002

Red, aluminum body
Amber, aluminum body

212201
212202

Red LED, aluminum body
Amber LED, aluminum body



Incandescent lamp version features a 920049 red or 920050 amber lens. The lamp is supplied with a 920011 body grommet and uses a 67 single contact bulb.

LED version uses a 201201 red or 201202 amber LED lens assembly.

Surface mount, can be mounted horizontally or vertically.

All lamps are single contact.

PART NO.

213001
213002

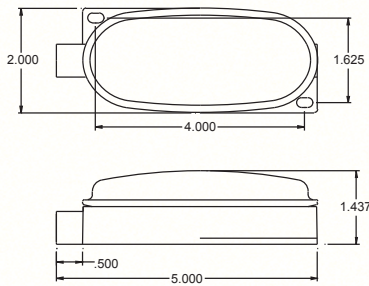
CLEARANCE OR SIDE MARKER

Red, aluminum body
Amber, aluminum body

213201
213202

Red LED, aluminum body
Amber LED, aluminum body

Clearance & Side Marker Lamps



Incandescent bulb version features a REFLEX 920058 red or a 920059 amber lens. The lamp features a bulb replaceable shock mount socket and brass inserts with machine screws for positive connections and uses a 168 single contact bulb.

LED version uses a 221201 red or 221202 amber LED REFLEX lens assembly.

Surface mount, can be mounted horizontally or vertically.

All lamps are single contact.

PART NO.

CLEARANCE OR SIDE MARKER ONE 1/4" N.P.T. END ENTRANCE

200017
200018

Red, valox body
Amber, valox body

200217
200218

Red LED, valox body
Amber LED, valox body

TWO 1/4" N.P.T. END ENTRANCE

210005
210006

Red, valox body
Amber, valox body

210205
210206

Red LED, valox body
Amber LED, valox body

ONE 1/4" N.P.T. REAR ENTRANCE

211005
211006

Red, valox body
Amber, valox body

211205
211206

Red LED, valox body
Amber LED, valox body

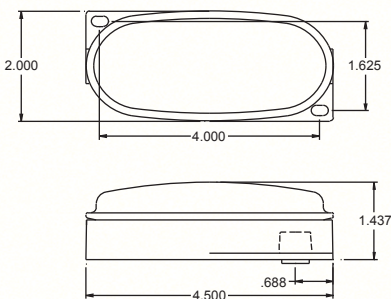
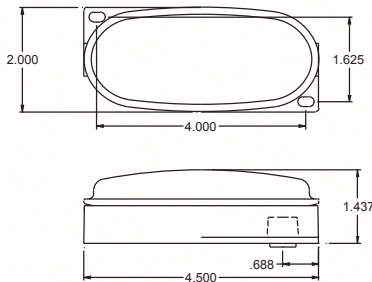
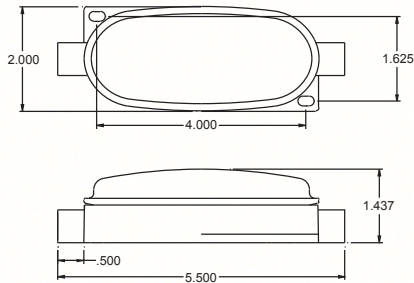
TWO 1/4" N.P.T. REAR ENTRANCE

212003
212004

Red, valox body
Amber, valox body

212203
212204

Red LED, valox body
Amber LED, valox body



Incandescent lamp version features a REFLEX 920058 red or 920059 amber lens. The lamp features a bulb replaceable shock mount socket and brass inserts with machine screws for positive connections and uses a 168 single contact bulb.

LED version uses a 221201 red or 221202 amber LED REFLEX lens assembly.

Both lamps are supplied with a rear entry choke seal 920088, ground wire, and grounding screw.

Surface mount, can be mounted horizontally or vertically.

All lamps are single contact.

PART NO.

CLEARANCE OR SIDE MARKER

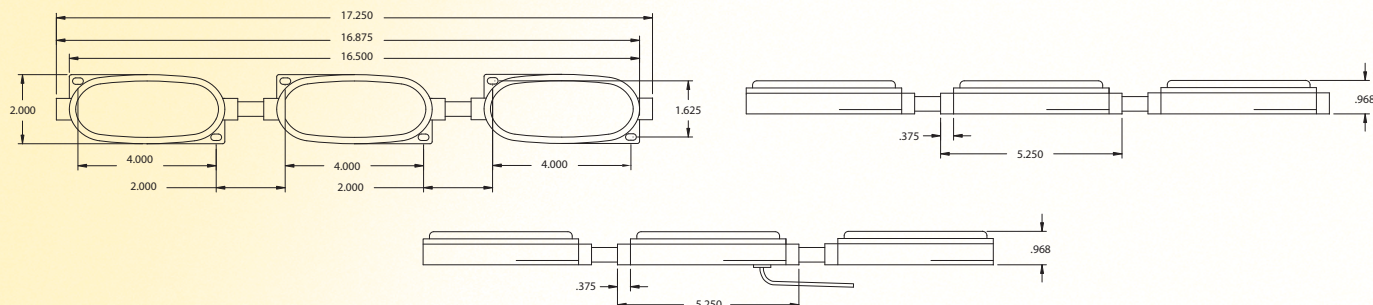
215001
215002

Red, valox body
Amber, valox body

215201
215202

Red LED, valox body
Amber LED, valox body





A low profile ID Bar lamp available in single contact incandescent bulb or LED version. The incandescent lamp features (3) 920049 red or 920050 amber lenses and uses (3) 67 bulbs.

The LED version features (3) 210201 red or 210202 amber LED lens assembly.

Both versions are furnished with either a 1/8" N.P.T. entrance on the ends or a 1/4" N.P.T. entrance in the rear. Horizontal surface mount.

All lamps are single contact.

PART NO. ONE END ENTRANCE

- 200013** Red, aluminum body
- 200014** Amber, aluminum body
- 200015** Red, aluminum body with 18' of 2 cond. cable
- 200016** Amber, aluminum body with 18' of 2 cond. cable

- 200213** Red LED, aluminum body
- 200214** Amber LED, aluminum body
- 200215** Red LED, aluminum body, with 18' of 2 cond. cable
- 200216** Amber LED, aluminum body with 18' of 2 cond. cable

PART NO. TWO END ENTRANCES

- 210003** Red, aluminum body
- 210004** Amber, aluminum body
- 210203** Red LED, aluminum body
- 210204** Amber LED, aluminum body

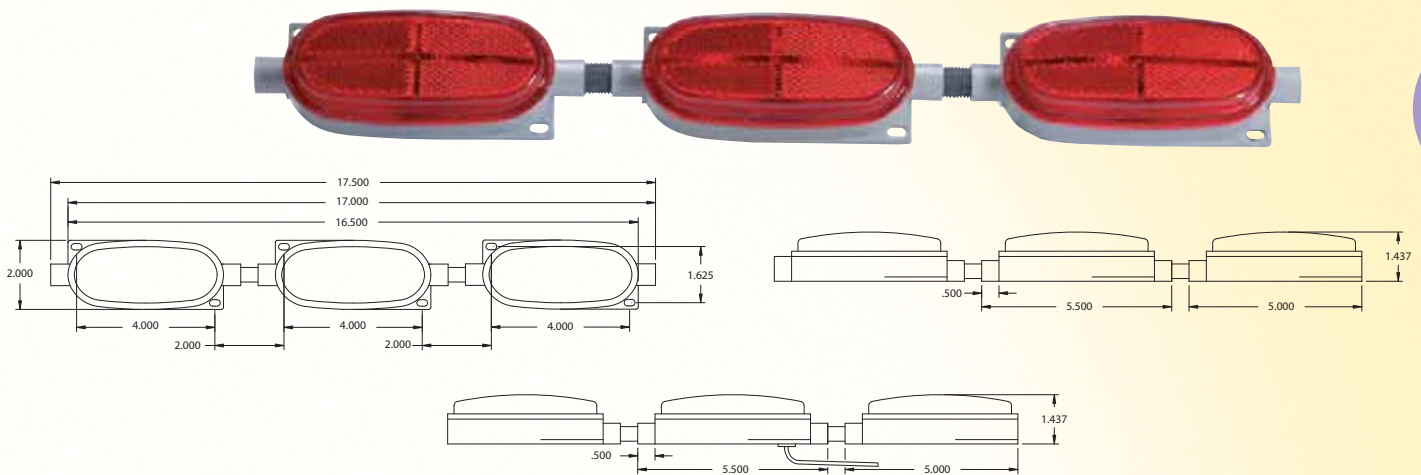
PART NO. ONE REAR ENTRANCE

- 211003** Red, aluminum body
- 211004** Amber, aluminum body
- 211203** Red LED, aluminum body
- 211204** Amber LED, aluminum body

PART NO. TWO REAR ENTRANCES

- 214001** Red, aluminum body
- 214002** Amber, aluminum body
- 214201** Red LED, aluminum body
- 214202** Amber LED, aluminum body

NOTE: ALL ID LAMPS ARE ON 6" CENTERS



Features (3) REFLEX 920058 red or 920059 amber lenses and a tough valox body. Incandescent bulb version has a bulb replaceable shock mount socket and brass inserts with machine screws for a positive connection and uses (3) 168 bulbs. Surface mount.

All lamps are single contact.

LED lamp features (3) 221201 red or 221202 amber LED lens assemblies.

The lamp is furnished with a 1/4" N.P.T. entrance as standard.

All lamps are single contact.

PART NO. ONE END ENTRANCE

- 200019** Red, valox body
- 200020** Amber, valox body
- 200021** Red, valox body with 18' of 2 cond. cable
- 200022** Amber, valox body with 18' of 2 cond. cable

- 200219** Red LED, valox body
- 200220** Amber LED, valox body
- 200221** Red LED, valox body, with 18' of 2 cond. cable
- 200222** Amber LED, valox body with 18' of 2 cond. cable

PART NO. TWO END ENTRANCES

- 210007** Red, valox body
- 210008** Amber, valox body
- 210207** Red LED, valox body
- 210208** Amber LED, valox body

PART NO. ONE REAR ENTRANCE

- 211007** Red, valox body
- 211008** Amber, valox body
- 211009** Red, valox body with 18' of 2 cond. cable
- 211010** Amber, valox body with 18' of 2 cond. cable

- 211207** Red LED, valox body
- 211208** Amber LED, valox body
- 211209** Red LED, valox body with 18' of 2 cond. cable
- 211210** Amber LED, valox body with 18' of 2 cond. cable

PART NO. TWO REAR ENTRANCES

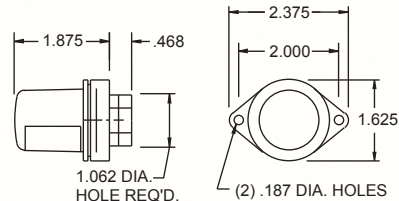
- 214003** Red, valox body
- 214004** Amber, valox body
- 214203** Red LED, valox body
- 214204** Amber LED, valox body

NOTE: ALL ID LAMPS ARE ON 6" CENTERS

License Lamps



Threaded entry model license lamp. Uses a 67 bulb and a 920055 silver lens. Furnished with a 1/4" N.P.T. entrance. Surface mount.

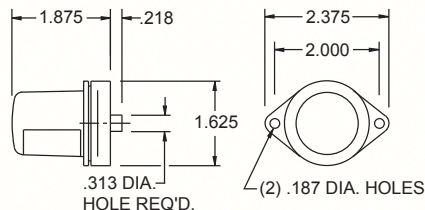


PART NO. LICENSE SINGLE CONTACT

- 240001** Silver, aluminum body
- 240002** Silver, aluminum body with a 920088 choke seal installed
- 240009** Silver, aluminum body with a 920045 choke seal installed and 4' of 2 cond. cable (uses a 68 NIDC bulb)



Features a 920055 silver lens. Uses a 67 bulb. Surface mount.

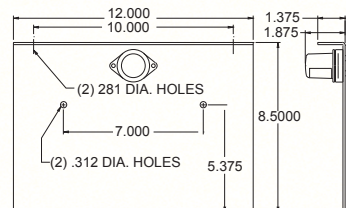


PART NO. LICENSE SINGLE CONTACT

- 240003** Silver, aluminum body
- 240008** Silver, aluminum body with 4' of BSXL wire installed



A grommet entry lamp 240002 comes attached to a gray powder coated 12 ga. steel license plate bracket 920062. Lamp features a silver 920055 lens and uses a 67 bulb.



PART NO. LICENSE & FRAME SINGLE CONTACT

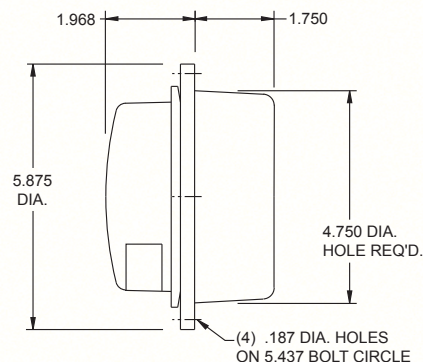
- 240010** Silver, aluminum body



A tough valox body lamp available in an incandescent bulb or LED version. The incandescent bulb version features a 920141 red lens, a 920459 shock mount socket and an 1157 bulb. The LED version uses a 710025 Multi-voltage single diode lens assembly.

Body must be drilled and tapped for wire entry unless otherwise stated.

Recess mount see pages 68 & 69 for mounting bracket.



PART NO. STOP/TURN TAIL OR CLEARANCE AND LICENSE DOUBLE CONTACT

- 400041** Red, valox body
- 400061** Red, valox body with (3) 920413 choke seals installed
- 400068** Red, valox body
- 400088** Red, valox body with ground strap
- 403041** Red, Multi-voltage single diode LED, valox body
- 403061** Red, Multi-voltage single diode LED, valox body with (3) 920413 cable choke seals installed
- 403068** Red, Multi-voltage single diode LED, valox body with ground strap and 1/4" N.P.T. hole in rear center
- 403088** Red, Multi-voltage single diode LED, valox body with chassis ground

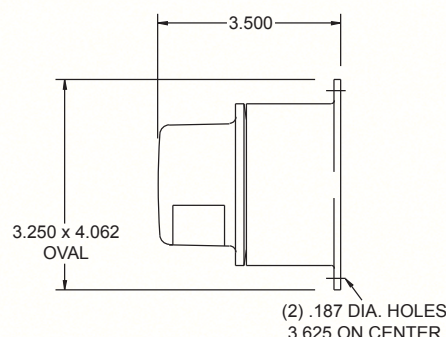
License Lamps



A durable valox material body that features a 920113 red lens and uses a 920104 shock mount and 67 bulb. Surface mount.

Body must be drilled for wire entry.

PART NO. **LICENSE SINGLE CONTACT**
570036 Red, valox body



Stop, Tail, Turn Lamps



A valox body lamp available in both incandescent and LED versions. The incandescent version features either a 920134 red or a 920135 amber shallow lenses. Lamps are available in either a single contact or double contact functions.

Single contact incandescent lamps use a 920460 socket and 1156 bulb and the double contact uses a 920459 socket and 1157 bulb.

Multi-diode LED lamps use a 710001 red or 710002 amber LED shallow lens assembly that can be wired as either a single or double contact lamp.

Multi-voltage LED lamps use a 920680 red single diode LED assembly with a 920134 red lens or a 920691 white single diode LED assembly with a 920135 amber lens.

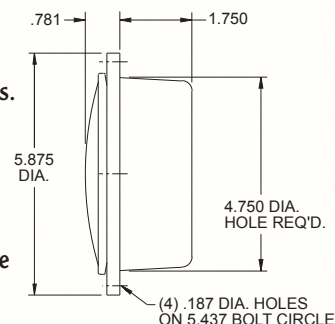
All B40 direct aluminum replacement lamps come with a ground strap that utilizes the base as a ground like an aluminum base lamp.

All B70 direct aluminum replacement lamps come with a ground strap that utilizes the base as a ground like an aluminum base lamp and with a drilled and tapped 1/4" N.P.T. hole in the center.

Special Purpose Sequential Turn LED Arrow uses a 710038 amber shallow lens with arrow overlay that frames the arrow sequencing amber LEDs. Lamp can be used as an additional rear turn or used as a mid turn when combined with the required marker light. Lamps are configured in a multi-diode arrow array and operate in a Multi-voltage application.

See pages 68 & 69 for mounting brackets.

For optimal sequencing turn signal flash rate should not exceed 85 flashes per minute.



PART NO.

407001
407002
407097

SPECIAL PURPOSE SEQUENTIAL LED ARROW SINGLE CONTACT

Sequential turn, amber LED, gray valox body with 920413 cable choke seal installed
Sequential turn, amber LED, gray valox body with 920420 wire choke seal installed
Sequential turn, amber LED, gray valox body

PART NO.

400037
400056
400065
400083
402037
402056
402065
402083
405037

TURN, SINGLE CONTACT SHALLOW LENS

Amber, incandescent bulb
Amber, incandescent bulb, with (3) 920413 cable choke seals installed
Amber, B70 replacement, incandescent bulb with ground strap
Amber, B40 replacement, incandescent bulb with ground strap
Amber, LED
Amber, LED, with (3) 920413 cable choke seals installed
Amber, LED B70 replacement, with ground strap
Amber, LED B40 replacement, with ground strap
Amber, Multi-voltage single diode LED

PART NO.

400036
400055
400064

STOP OR TURN, SINGLE CONTACT SHALLOW LENS

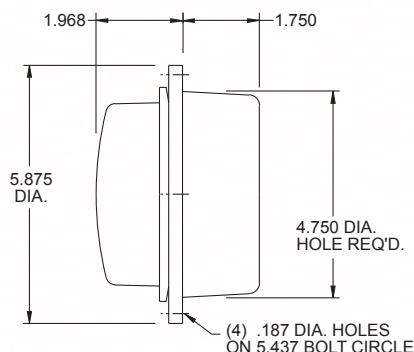
Red, incandescent bulb
Red, incandescent bulb, with (3) 920413 cable choke seals installed
Red, B70 replacement, incandescent bulb with ground strap

CONTINUED ON NEXT PAGE

400074	Red, incandescent bulb with 18" pigtails installed
400082	Red, B40 replacement, incandescent bulb with ground strap
402039	Red, LED
402059	Red, LED, with (3) 920413 cable choke seals installed
402066	Red, LED B70 replacement with ground strap
402074	Red, LED with 18" pigtails installed
402086	Red, LED B40 replacement with ground strap
403074	Red, Multi-voltage single diode LED with 18" pigtails installed

PART NO. STOP, TURN, TAIL OR CLEARANCE DOUBLE CONTACT SHALLOW LENS

400039	Red, incandescent bulb
400053	Red, incandescent bulb with 18" pigtails installed
400059	Red, incandescent bulb, with (3) 920413 cable choke seals installed
400066	Red, B70 replacement, incandescent bulb with ground strap
400086	Red, B40 replacement, incandescent bulb with ground strap
400093	Red, B40 replacement, incandescent bulb with ground strap and 18" pigtails installed
402039	Red, LED
402053	Red, LED with 18" pigtails installed
402059	Red, LED with (3) 920413 cable choke seals installed
402066	Red, LED B70 replacement with ground strap
402086	Red, LED B40 replacement with ground strap
402093	Red, LED B40 replacement with ground strap and 18" pigtails installed
403039	Red, Multi-voltage single diode LED
403053	Red, Multi-voltage single diode LED with 18" pigtails installed
403059	Red, Multi-voltage single diode LED, with (3) 920413 cable choke seals installed
403066	Red, B70 replacement, Multi-voltage single diode LED with ground strap
403086	Red, B40 replacement, Multi-voltage single diode LED with ground strap



A valox body lamp available in both incandescent and LED versions. The incandescent version features either a 920144 red or 920145 amber deep lenses

Lamps are available in either single or double contact functions. Single contact incandescent lamps use a 920460 socket and 1156 bulb and the double contact uses a 920459 socket and 1157 bulb.

Multi-diode LED lamps use a 710011 red or 710012 amber LED deep lens assembly that can be wired as either a single or double contact lamp.

Multi-voltage LED lamps use a 920685 red single diode LED assembly with a 920134 red lens for red or a 920691 white single diode LED assembly with a 920135 amber lens for amber.

All B40 direct aluminum replacement lamps come with a ground strap that utilizes the base as a ground like an aluminum base lamp.

All B70 direct aluminum replacement lamps come with a ground strap that utilizes the base as a ground like an aluminum base lamp and with a drilled and tapped 1/4" N.P.T. hole in the center.

See pages 68 & 69 for mounting brackets.



PART NO. TURN, SINGLE CONTACT DEEP LENS

400058	Amber, incandescent bulb with (3) 920413 choke seals installed
400070	Amber, incandescent bulb
400071	Amber, B70 replacement, incandescent bulb with ground strap
400085	Amber, B40 replacement, incandescent bulb with ground strap
402058	Amber, LED, with (3) 920413 cable choke seals installed
402070	Amber, LED
402071	Amber, LED B70 replacement with ground strap
402085	Amber, LED B40 replacement with ground strap
403114	Amber, Multi-voltage single diode LED

PART NO. STOP OR TURN, SINGLE CONTACT DEEP LENS

400038	Red, incandescent bulb
400057	Red, incandescent bulb with (3) 920413 choke seals installed

Stop, Turn, & Tail Lamps



NOTE: See page 82 for parts breakdown

PART NO.
810012

810212

PART NO.
810011

PART NO.
810013

810213

Pedestal mount aluminum body lamp is available in an incandescent and LED version. Incandescent bulb version features a 920134 red or 920135 amber lens. The single contact bulb version uses a 920015 single contact socket and 1156 bulb and the double contact lamp uses a 920013 double contact socket and 1157 bulb. The LED versions use a 710003 red or 710004 amber LED lens assembly.

Requires a mounting hole large enough to accommodate a 9/16" diameter stud mount.

Lamps include 18" pigtails.

TURN SINGLE CONTACT

Amber, aluminum body

Amber LED, aluminum

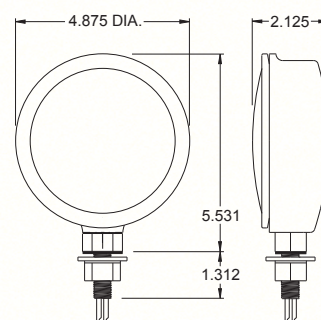
STOP OR TURN SINGLE CONTACT

Red, aluminum body

STOP, TAIL, TURN OR CLEARANCE DOUBLE CONTACT

Red, aluminum body

Red LED, aluminum



Back Up Lamps



Back up lamps are available in incandescent multi and single diode, and both are Multi-voltage. LED lamps are designed to operate for either 12 or 24 volt systems. Incandescent lamps use a 920139 lens with a 920460 socket and 1156 bulb. Multi-diode lamps use a 710037 LED clear lens assembly and the single diode lamp uses a 920139 lens with a 920691 single diode LED assembly.

ALL B40 direct aluminum replacements come with a ground strap that utilizes the base as a ground like an aluminum base lamp.

All B70 direct aluminum replacements come with a ground strap that utilizes the base as a ground like an aluminum base lamp and with a 1/4" N.P.T. hole in the center.

Bodies must be drilled or tapped for wire entry unless otherwise noted.

Recess mount, see page 68 for mounting brackets.

NOTE: Two back up lamps are required per vehicle to meet F.M.V.S.S. compliance.

PART NO.

400043

400063

400075

400089

402043

402063

402075

402089

405043

BACK UP

Clear, valox body

Clear, valox body with (3) 920413 choke seals installed

Clear, B70 replacement, valox body with ground strap

Clear, B40 replacement valox body with ground strap

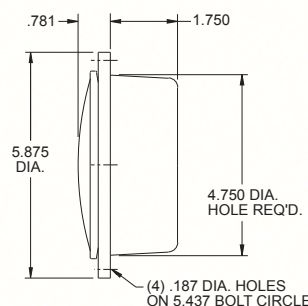
Clear, multi-diode Multi-voltage LED, valox body

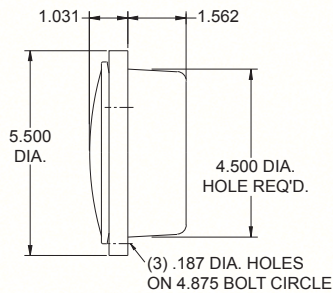
Clear, multi-diode Multi-voltage LED, valox body with (3) 920413 cable choke seals installed

Clear, B70 replacement, multi-diode Multi-voltage LED, valox body with ground strap

Clear, B40 replacement, multi-diode Multi-voltage LED, valox body with ground strap

Clear, Multi-voltage single diode LED, valox body





Back up lamps are available in incandescent and in both multi and single diode Multi-voltage. LED lamps are designed to operate for either 12 or 24 volt systems. Incandescent lamps use a 920139 lens with a 920460 socket and 1156 bulb. Multi-diode lamps use a 710037 LED clear lens assembly and the single diode lamp uses a 920139 lens with a 920691 single diode LED assembly.

All B45 direct aluminum replacements come with a ground strap that utilizes the base as a ground like an aluminum base lamp.

Bodies must be drilled or tapped for wire entry unless otherwise noted.

Recess mount, see pages 68 & 69 for mounting brackets.

NOTE: Two back up lamps are required per vehicle to meet F.M.V.S.S. 108 compliance.



PART NO.

450032

450057

450067

455032

455067

450099

450157

450167

450299

452032

452057

452067

452157

452167

455032

455067

Clear, valox body

Clear, valox body with (3) 920413 choke seals installed

Clear, valox body with 8' of 2 conductor cable installed

Clear, Multi-voltage single diode LED, valox body

Clear, Multi-voltage single diode LED, valox body with 8' of 2 conductor cable installed

Clear, B45 replacement, valox body with ground strap

Clear, B45 replacement, valox body with (3) 920413 cable choke seals installed with ground strap

Clear, B45 replacement, valox body with 8' of 2 conductor cable installed with ground strap

Clear, B45 replacement, multi-diode multi-voltage, valox body

Clear, Multi-voltage multi-diode LED, valox body

Clear, Multi-voltage multi-diode LED, valox body with (3) 920413 choke seals installed

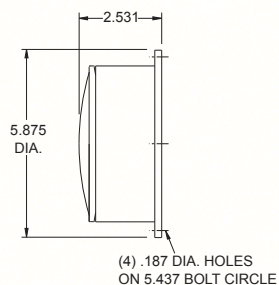
Clear, Multi-voltage multi-diode LED, valox body with 8' of 2 conductor cable installed

Clear, B45 replacement, multi-diode Multi-voltage LED, valox body with (3) 920413 cable choke seals installed with ground strap

Clear, B45 replacement, multi-diode Multi-voltage LED, valox body with 8' of 2 conductor cable installed with ground strap

Clear, Multi-voltage single diode LED, valox body

Clear, Multi-voltage single diode LED, valox body with 8' of 2 conductor cable installed



Back up lamps are available in incandescent and in both multi and single diode multi-voltage. LED lamps are designed to operate for either 12 or 24 volt systems. Incandescent lamps use a 920139 lens with a 920460 socket and 1156 bulb. Multi-diode lamps use a 710037 LED clear lens assembly and the single diode lamp uses a 920139 lens with a 920691 single diode LED assembly.

Bodies must be drilled or tapped for wire entry unless otherwise noted.

Surface mount

NOTE: Two back up lamps are required per vehicle to meet F.M.V.S.S. 108 compliance

PART NO.

470024

472024

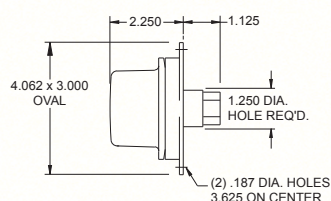
475024

BACK UP

Clear, Valox body

Clear, Multi-voltage multi-diode LED, valox body

Clear, Multi-voltage single diode LED, valox body



A back up lamp with a 1/4" N.P.T. threaded rear entry. Lamp features a Valox body with a 920112 deep clear lens with a press fit socket and 1156 bulb. Lamps are direct replacement to aluminum body version using a ground strap that utilizes the base of the lamp as a ground.

NOTE: Two back up lamps are required per vehicle to meet F.M.V.S.S. 108 compliance

PART NO.

500051

500062

BACK UP

Clear, valox body with ground strap

Clear, valox body with choke seal with pigtail and ground strap



Back Up Lamps

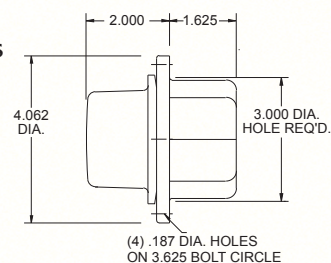


PART NO.
560027
560037
560054

A valox body back up lamp that features a 920112 deep clear lens, 920367 socket and 1156 bulb. All B56 direct aluminum replacements feature a ground strap that utilizes the base of the lamp as a ground.

Recess mount, see pages 68 & 69 for mounting brackets.

NOTE: Two back up lamps are required per vehicle to meet F.M.V.S.S. 108 conformance.



BACK UP

Clear, valox body with 920413 cable choke seal installed
 Clear, valox body
 Clear, B56 replacement, valox body with ground strap

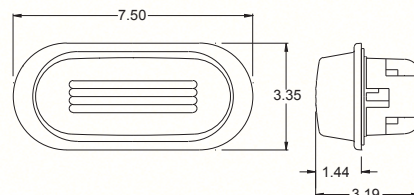
Cabinet, Meter & Dome Lamps



PART NO.
730004
730008
730014

735004
735008

A tough nylon bodied lamp available in both an incandescent or Multi-voltage LED version. Both versions feature a 920497 clear lens. The incandescent version uses a 920460 socket and 1156 bulb. The LED version features a 920692 clear LED assembly.



Bodies must be drilled and tapped for wire entry unless otherwise noted.

Recess mount, see pages 68 & 69 for mounting brackets.

NOTE: Two back up lamps are required per vehicle to meet F.M.V.S.S. 108 conformance.

BACKUP

Clear, with 920413 cable choke seal installed
 Clear, plug-in replacement lamp with 3 conductor plug
 Clear, with 920420 wire choke seal installed

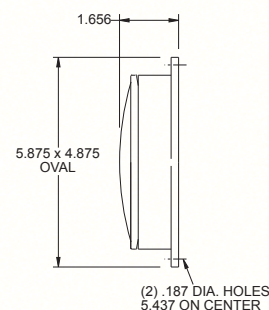
Clear, Multi-voltage single diode LED, with 920413 cable choke seal installed
 Clear, Multi-voltage single diode LED, plug in replacement lamp with 3 conductor plug



PART NO.
820011
820311
820317
820319

A low profile dome or cabinet lamp with a 920077, 3 amp toggle switch. Incandescent bulb features a 920133 clear lens with a 920014 socket and a 1141 bulb. LED version features a 710026 clear LED lens assembly. A ground must be provided to all valox lamps

NOTE: Incandescent lamps are designed for use with 1141 bulbs only.



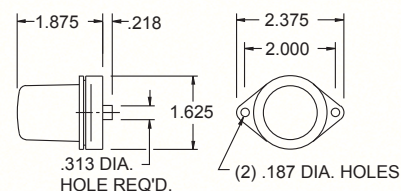
CABINET/METER/DOME

Clear, aluminum body
 Clear, Multi-voltage single diode LED, aluminum body
 Clear, Multi-voltage single diode LED, valox body
 Clear, Multi-voltage single diode LED, valox body with 920420 wire choke seal installed



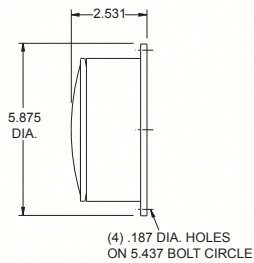
PART NO.
240003

A meter or cabinet lamp that uses a shielded 920055 deep lens and a 67 incandescent bulb.



CABINET/METER/DOME

Silver, aluminum body



A dome or compartment lamp available in both incandescent and LED versions with a 920038 20 amp toggle switch. The incandescent version uses a 920133 clear shallow lens, a 920460 socket and 1141 bulb. The LED version uses a 710026 single diode Multi-voltage LED clear lens assembly. All bodies must be provided with an internal ground.

Bodies must be drilled and tapped for wire or cable entry.

NOTE: Incandescent lamps are designed for use with 1141 bulbs only.



PART NO.

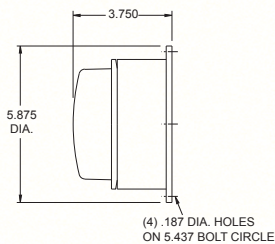
CABINET/METER/DOME

470013

Clear, valox body

470313

Clear, Multi-voltage single diode LED, valox body



A dome or compartment lamp available in both incandescent and LED versions with a 920038 20 amp toggle switch. The incandescent version uses a 920140 clear deep lens, a 920460 socket and 1141 bulb. The LED version uses a 710027 single diode Multi-voltage LED clear lens assembly. All bodies must be provided with an internal ground.

Bodies must be drilled and tapped for wire or cable entry.

NOTE: Incandescent lamps are designed for use with 1141 bulbs only.



PART NO.

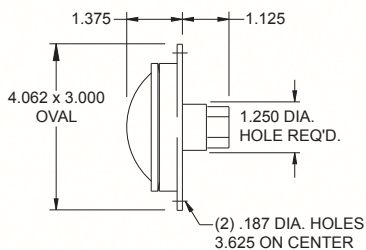
CABINET/METER/DOME

470043

Clear, valox body

470343

Clear, Multi-voltage single diode LED, valox body



A valox body threaded entry model dome or cabinet lamp available in both incandescent or LED. Incandescent lamp version features a 920115 clear shallow lens with a press fit socket and a 67 bulb, or a 920111 clear deep lens with a press fit socket and 1141 bulb. LED version features a 510055 Multi-voltage single diode shallow LED lens assembly or a 510056 Multi-voltage single diode deep LED lens assembly. Bodies are furnished with a 1/4" N.P.T. wire entrance. All bodies include an installed ground strap for body grounding.



PART NO.

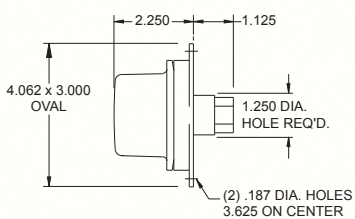
CABINET/METER/DOME SHALLOW LENS

500056

Clear, B50 replacement, incandescent bulb with ground strap

500356

Clear, B50 replacement, Multi-voltage single diode LED with ground strap



PART NO.

CABINET/METER/DOME DEEP LENS

500057

Clear, B50 replacement, incandescent bulb with ground strap

500357

Clear, B50 replacement, Multi-voltage single diode LED with ground strap



Cabinet, Meter & Dome Lamps



NOTE: See page 18 for aluminum dimensions.

PART NO.

200023

CABINET/METER/DOME ONE END ENTRANCE

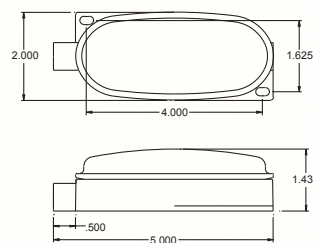
Clear, aluminum body

200024

Clear, valox body

200224

Clear LED, valox body



NOTE: See page 18 for aluminum dimensions.

PART NO.

210009

CABINET/METER/DOME TWO END ENTRANCES

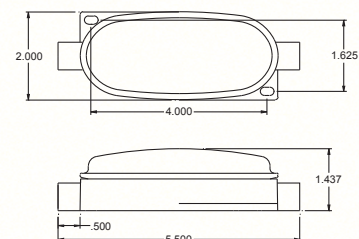
Clear, aluminum body

210010

Clear, valox body

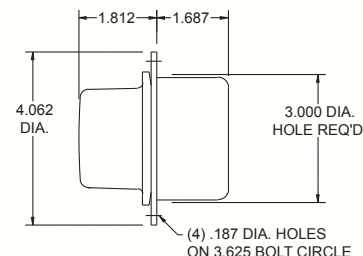
210210

Clear, valox body, LED



NOTE: See page 14 for shallow lens dimensions.

A dome, meter or cabinet lamp in a valox body. Lamps are available in both incandescent and LED versions. Incandescent versions feature either a 920115 clear shallow lens, 920367 socket with a 67 bulb or a 920111 clear deep lens, 920367 socket and a 1141 bulb. LED versions feature either a 510055 clear shallow LED lens assembly or a 510056 clear deep LED lens assembly. B56 direct replacement lamps feature a ground strap for body grounding.



Bodies must be drilled or tapped for wire or cable entry unless otherwise specified.

Recess mount, see page 68 for mounting brackets.

PART NO.

CABINET/METER/DOME SHALLOW LENS

560036

Clear, valox body, incandescent bulb

560060

Clear B56 replacement, valox body, incandescent bulb with ground strap

560381

Clear, valox body, Multi-voltage single diode LED

560383

Clear, valox body, Multi-voltage single diode LED with 920413 choke seal installed

PART NO.

CABINET/METER/DOME DEEP LENS

560051

Clear, valox body, incandescent bulb

560061

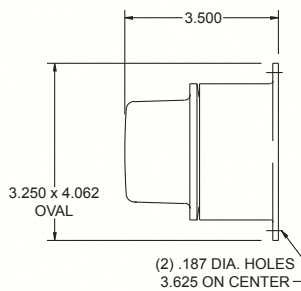
Clear B56 replacement, valox body, incandescent bulb with ground strap

560382

Clear, valox body, Multi-voltage single diode LED

560384

Clear, valox body, Multi-voltage single diode LED with 920413 choke seal installed



A dome, meter or cabinet lamp in a valox body. Lamps are available in both incandescent and LED versions. Incandescent versions feature either a 920115 clear shallow lens, 920367 socket with a 67 bulb or a 920111 clear deep lens, 920367 socket and a 1141 bulb. LED versions feature either a 510055 clear shallow LED lens assembly or a 510056 clear deep LED lens assembly. A 920078 3 amp toggle switch is only available in the deep lens incandescent bulb version but available in both shallow and deep LED versions.



Bodies must be drilled or tapped for wire or cable entry unless otherwise specified.

PART NO. CABINET/METER/DOME SHALLOW LENS

- 570025** Clear, valox body incandescent bulb without switch
- 570325** Clear, valox body, Multi-voltage single diode LED without switch
- 570344** Clear, valox body, Multi-voltage single diode LED with switch

PART NO. CABINET/METER/DOME DEEP LENS

- 570026** Clear, valox body incandescent bulb with switch
- 570326** Clear, valox body, Multi-voltage single diode LED with switch
- 570342** Clear, valox body, Multi-voltage single diode LED without switch

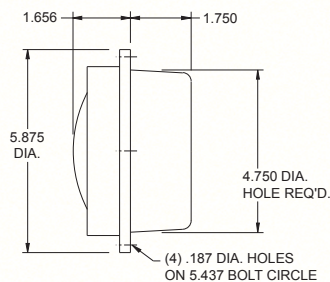
Sealed Beam Work Lamps

Sealed Beam flood lamps feature a par 36 style bulb available in both incandescent and LED versions. The bulb is held in place with a EPDM retaining ring with the same snap seal o ring sealing characteristics used in all Betts lighting. Bulb versions use a clear 4466 flood and a 920234 retaining grommet, **LED's use a 920775 LED bulb and a 920734 retaining grommet. This retaining grommet is different than the incandescent version due to the shape of the LED bulb.** For additional bulb protection on the incandescent bulb versions a 920071 retaining grommet has been extended to allow a 920143 clear shallow lens that provides additional protection from bulb breakage. This extended retaining grommet is not available in the LED version. All direct replacements for aluminum body lamps feature a ground strap that utilizes the body as a ground.

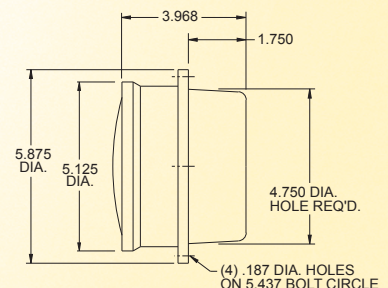
Also available mounted in 920731 flush mount angled casting to give a 30 degree down and out illuminated viewing area when backing up. Bodies must be drilled and tapped for wire or cable entry.



450533 shown



400072 shown



PART NO. SEALED BEAM FLOOD, SPOT, AND WORK LAMPS

- 400044** Clear, valox body incandescent bulb, flood
- 400092** Clear, valox body incandescent bulb, flood with ground strap
- 400072** Clear, valox body incandescent bulb with extended grommet and lens, flood
- 400094** Clear, valox body incandescent bulb with extended grommet and lens, flood with ground strap
- 400094** Clear, valox body incandescent bulb with extended grommet and lens, flood with ground strap
- 400544** Clear, valox body LED flood

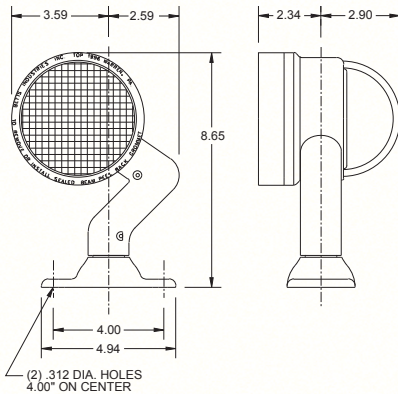
CONTINUED ON NEXT PAGE

Sealed Beam flood lamps feature a par 36 style bulb available in both incandescent and LED versions. The bulb is held in place with an EPDM retaining ring with the same Snap Seal o ring sealing characteristics used in all Betts lighting. Bulb versions use a clear 4466 flood or a H7616 halogen spot and a 920234 retaining grommet, **LED's use a 920775 LED bulb and a 920734 retaining grommet. This retaining grommet is different than the incandescent version due to the shape of the LED bulb.**

For additional bulb protection on the incandescent bulb versions a 920071 retaining grommet has been extended to allow a 920143 clear shallow lens that provides additional protection from bulb breakage. This extended retaining grommet is not available in the LED version. Lamp bodies are powder coated aluminum.

Lamps feature both horizontal and vertical rotation.

Available in either a (1) abrasion resistant lead wire for body grounding or a (2) abrasion resistant lead wires for internal or common grounding.



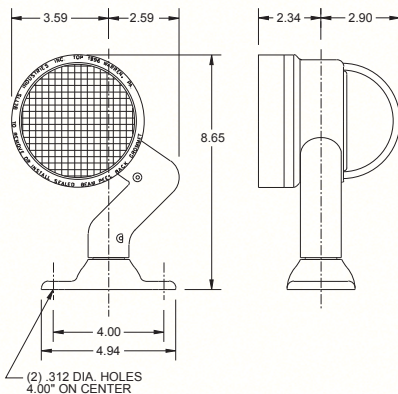
PART NO.

WORKLIGHT WITH (1) LEAD WIRE REGULAR GROMMET

- 315001** Clear, sealed beam flood
- 315003** Clear, sealed beam flood with 920039 20 amp toggle switch
- 315005** Clear, halogen spot
- 315007** Clear, halogen spot with 920039 20 amp toggle switch
- 315501** Clear, LED flood
- 315503** Clear, LED flood with 920078 3 amp toggle switch



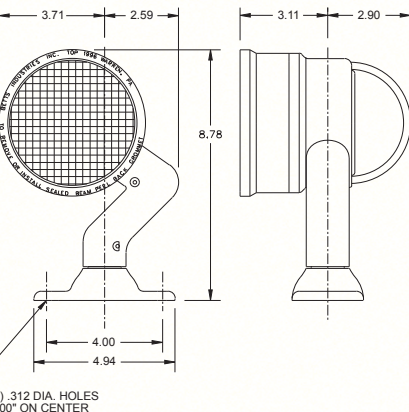
Also available in
white or black



PART NO.

FLOOD WITH (2) LEAD WIRES REGULAR GROMMET

- 325001** Clear, sealed beam flood
- 325003** Clear, sealed beam flood with 920039 20 amp toggle switch
- 325005** Clear, halogen spot
- 325007** Clear, halogen spot with 920039 20 amp toggle switch
- 325501** Clear, LED flood
- 325503** Clear, LED flood with 920078 3 amp toggle switch



PART NO.

WORKLIGHT WITH (1) LEAD WIRE EXTENDED GROMMET

- 315009** Clear, sealed beam flood
- 315010** Clear, sealed beam flood with 920039 20 amp toggle switch
- 315011** Clear, halogen spot
- 315012** Clear, halogen spot with 920039 20 amp toggle switch



Also available in
white or black

PART NO.

WORKLIGHT WITH (2) LEAD WIRES EXTENDED GROMMET

- 325009** Clear, sealed beam flood
- 325010** Clear, sealed beam flood with 920039 20 amp toggle switch
- 325011** Clear, halogen spot
- 325012** Clear, halogen spot with 920039 20 amp toggle switch

Sealed Beam Work Lamps



Also available in white or black



Also available in white or black



Also available in white or black



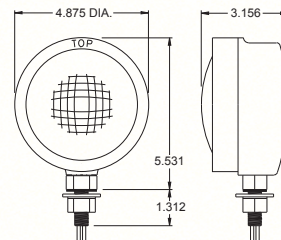
Also available in white or black

Work lights are available in either a standard fixed pedestal mount or an adjustable pedestal mount. Pedestal mount sealed beam lamp with either a 9/16" or 13/16" mounting stud. Lamps use a 4466 clear flood, H7616 clear halogen spot, 4415A amber sealed beam held in place with a 920234 retaining grommet. LED lamps using a 920775 LED flood use a 920734 retaining grommet. Lamps come equipped with a abrasion resistant 18 inch pigtail. Adjustable pedestal mount lamps use a 9/16" mounting stud. All mounting hardware is included with lamps.

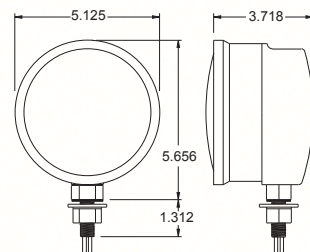
For additional bulb protection on the incandescent bulb versions a 920071 retaining grommet has been extended to allow a 920143 clear shallow lens that provides additional protection from bulb breakage. This extended retaining grommet is not available in the LED version. Lamp bodies are powder coated aluminum.

Note: LED light utilizes a different retaining grommet than traditional PAR 36 lights due to shape of bulb.

- PART NO.** **13/16 MOUNTING STUD, REGULAR GROMMET**
- 800014** Clear, sealed beam flood
 - 800015** Amber, sealed beam flood
 - 800018** Clear, sealed beam flood with 920039 20 amp toggle switch
 - 800514** Clear, LED flood
 - 800518** Clear, LED flood with 920078 3 amp toggle switch

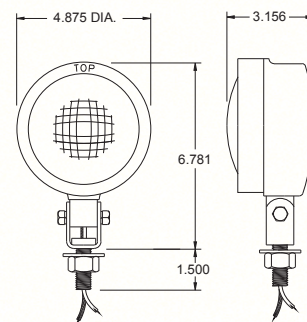


- PART NO.** **9/16 MOUNTING STUD, REGULAR GROMMET**
- 800016** Clear, sealed beam flood
 - 800017** Amber, sealed beam flood
 - 800516** Clear, LED flood



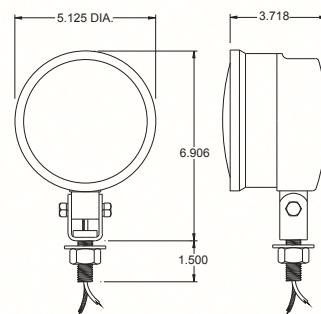
- PART NO.** **13/16 MOUNTING STUD, EXTENDED GROMMET**
- 800019** Clear, sealed beam flood
 - 800020** Amber, sealed beam flood
 - 800023** Clear, sealed beam flood with 920039 20 amp toggle switch

- PART NO.** **9/16 MOUNTING STUD, EXTENDED GROMMET**
- 800021** Clear, sealed beam flood
 - 800022** Amber, sealed beam flood



- PART NO.** **ADJUSTABLE STUD MOUNT, REGULAR GROMMET**
- 805001** Clear, sealed beam flood
 - 805002** Amber, sealed beam flood
 - 805003** Clear, sealed beam flood with 920039 20 amp toggle switch
 - 805005** Clear, sealed beam flood with 920420 wire choke seal installed
 - 805006** Amber, sealed beam flood with 920420 wire choke seal installed
 - 805021** Clear, halogen spot
 - 805022** Clear, halogen spot with 920039 20 amp toggle switch

- 805501** Clear, LED flood
- 805503** Clear, LED flood with 920078 3 amp toggle switch
- 805505** Clear, LED flood with 920420 wire choke seal installed



- PART NO.** **ADJUSTABLE STUD MOUNT, EXTENDED GROMMET**
- 805011** Clear, sealed beam flood
 - 805012** Amber, sealed beam flood
 - 805013** Clear, sealed beam flood with 920039 20 amp toggle switch
 - 805014** Clear, sealed beam flood with 920420 wire choke seal installed
 - 805015** Amber, sealed beam flood with 920420 wire choke seal installed
 - 805025** Clear, halogen spot
 - 805026** Clear, halogen spot with 920039 20 amp toggle switch

Note: All lamps available in gray, white or black powder coating.

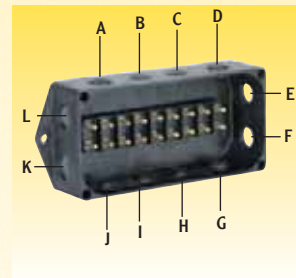
Features 18 brass circuit studs in a moisture and corrosion free environment. Entry on all 4 sides using 4-920413 Choke Seals and 1-920402 cable entrance fitting. Also includes 1-920412 1/2" N.P.T. square head pipe plug and stud hardware package 920414. May also be ordered custom drilled/tapped to specifications. See catalog supplement No. 1.

PART NO.

- 351044** Complete unit - drilled and tapped
- 351045** Complete unit - undrilled
- 920209** Circuit bridge
- 920411** Sq. head plug 3/8" N.P.T.
- 920412** Sq. head plug 1/2" N.P.T.
- 920414** Hardware package
- 920444** Sq. head plug 3/4" N.P.T.
- 920449** Fasteners (4)
- 920450** Cover, fastener & o-ring
- 920600** O-ring for new style covers

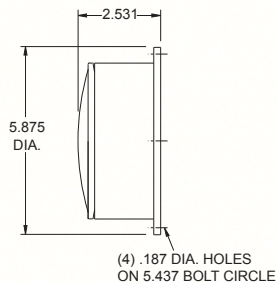
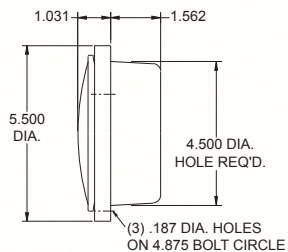
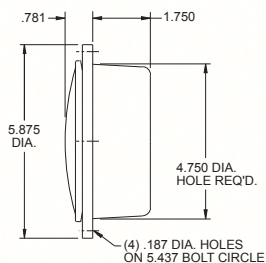
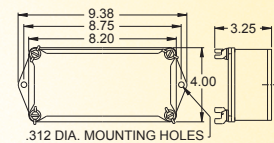


DRI-SEAL
CIRCUIT BOX



CUSTOM DRILLING

Specify drilling size and location desired. Cable entrance fittings are 3/8", 1/2" & 3/4" N.P.T. Choke Seals require 9/16" holes.



Junction boxes feature a polycarbonate shallow clear lens 920143. They are available with or without a 7 pole terminal disc with hardware. Boxes must be drilled and tapped unless otherwise stated. Mounting gasket and screws included. Recess or surface mount available.

PART NO.

- 400045** Clear, valox body
- 400095** Clear, valox body with chassis ground

RECESS MOUNT - WITHOUT TERMINAL DISC

RECESS MOUNT - WITH TERMINAL DISC

- 400054** Clear, valox body
- 400096** Clear, valox body with chassis ground

RECESS MOUNT - WITHOUT TERMINAL DISC

- 450034** Clear, valox body

RECESS MOUNT - WITH TERMINAL DISC

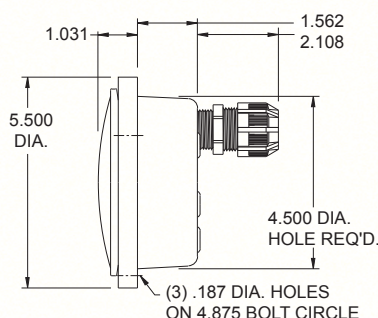
- 450044** Clear, valox body

SURFACE MOUNT - WITHOUT TERMINAL DISC

- 470026** Clear, valox body

SURFACE MOUNT - WITH TERMINAL DISC

- 470041** Clear, valox body



PART NO.

- 450061** Clear, valox body

Ready to install junction boxes with 7 pole terminal disc assembly. Features a durable Valox body and a polycarbonate shallow clear lens 920143. Boxes are drilled and tapped with entry fittings installed. Fittings include (1) cable entrance fitting 920402, (4) 1 hole cable choke seals 920413 and (1) 4 hole wire choke seal 920420. Mounting gasket and screws included. Recess mount.

Junction Boxes



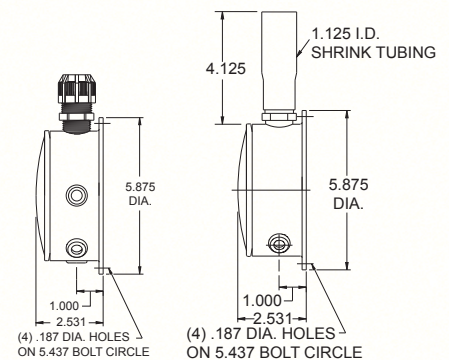
PART NO.
470042

470046

Ready to install junction boxes which each feature a 7 pole terminal disc assembly. Features a heavy duty Valox body and a polycarbonate shallow clear lens 920143. Boxes are drilled and tapped with entry fittings installed. Mounting gasket and screws included. Surface mount.

Clear, valox body with (1) cable entrance fitting 920402, (1) four hole wire choke seal 920420 and (4) one hole cable choke seals 920413

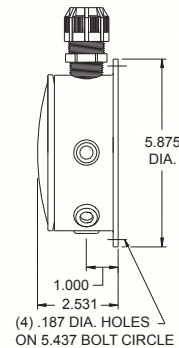
Clear, valox body with (1) cable entrance shrink fitting 920326 and (2) one hole cable choke seals 920413



PART NO.
470063

For use with non-piped conventional wiring. Ready to install junction box with a 7 pole terminal disc assembly. Provided with a polycarbonate shallow clear lens 920143. Models are drilled and tapped with entry fittings installed. Mounting gasket and screws included. Surface mount.

Clear, valox body with (1) cable entrance fitting 920402 and (5) four hole wire choke seals 920420



PART NO.
560022

560026

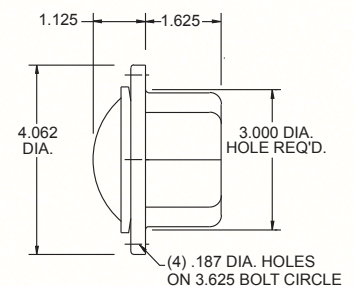
Junction boxes feature a durable valox body and a polycarbonate shallow clear lens 920115. They are available with or without a 4 pole terminal disc with hardware. Body must be drilled and tapped for wire entry. Mounting gasket and screws included. Recess mount.

WITHOUT TERMINAL DISC

Clear, valox body

WITH TERMINAL DISC

Clear, valox body



PART NO.
570027

570037
570038

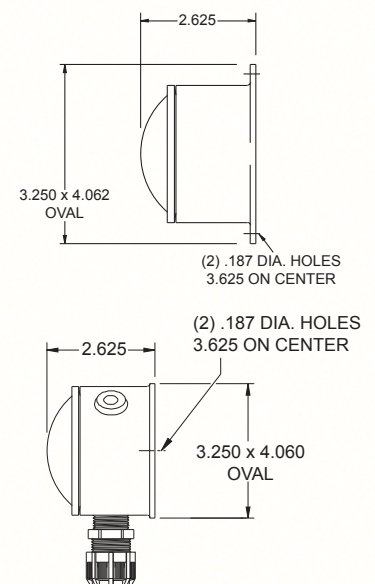
Junction boxes feature a durable valox body and a polycarbonate shallow clear lens 920115. They are available with or without a 4 pole terminal disc with hardware. Body must be drilled and tapped for wire entry unless otherwise stated. Mounting gasket and screws included. Surface mount.

WITHOUT TERMINAL DISC

Clear, valox body

WITH TERMINAL DISC

Clear, valox body
Clear, valox body with (1) cable entrance fitting and (2) cable choke seals installed



Certificate Holders

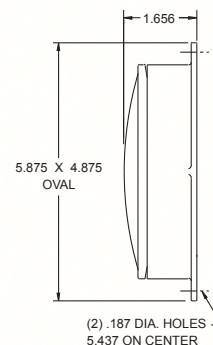


PART NO.

820012
820013
820014
820015
820016

This paper safe features polycarbonate shallow smoked lens 920142. It is available with or without a stainless steel retainer spring. Mounting screws included. Surface mount.

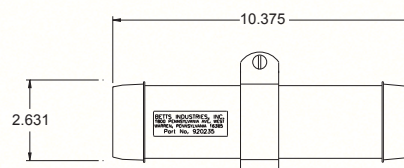
valox body with spring (PS-1)
 Aluminum body with spring (PS-1A)
 valox body without spring (PS-2)
 Black valox body with spring
 Black valox body without spring



PART NO.
920235

Maintenance paper holder for trucks and trailers. Unit is waterproof and ready to install. The tube is 9-1/2" long, has a 2" inside and a 2-3/8" outside diameter. Comes with (2) removable end caps attached to each other to prevent loss. Mounting bracket and hardware included.

Black (MPH-1)



Accessories



PART NO.
920624

LED ANTI-THEFT RINGS

Made of a bright finish 304 stainless steel material to mount over Betts 40 Series lamps using existing lamp mounting holes

LED Lens Retainer Ring for B40 Valox Lamps

PART NO.
920625

Made of a bright finish 304 stainless steel material to mount over Betts 56 Series lamps using existing lamp mounting holes

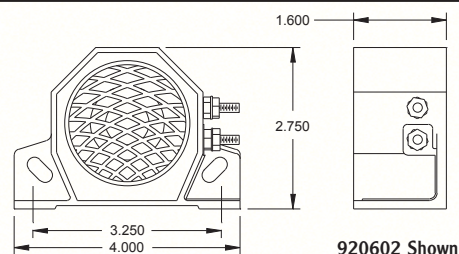
LED Lens Retainer Ring for B56 Valox Lamps



PART NO.
920602
920633

BACK UP ALARM

12 volt, 97 D.B.A. Self grounding
 12 volt, 97 D.B.A. External grounding



PART NO.
920032

Cleans both male and female ends of all 7 way plug terminals. Rugged stainless steel brushes enclosed in a convenient to carry 6 1/2" long cylinder.

Plug Scrubber (18374)



PART NO.
920564

A roll of 50 clear film stickers

Excellent for lubricating wire or cable when pushing or pulling through rubber fittings. Also good for lubricating tubing barbs and inside of polyethylene tubing to expedite wire pulling.

PART NO.

920018 Wire pulling lubricant in (1) quart squeeze bottle (15-236)

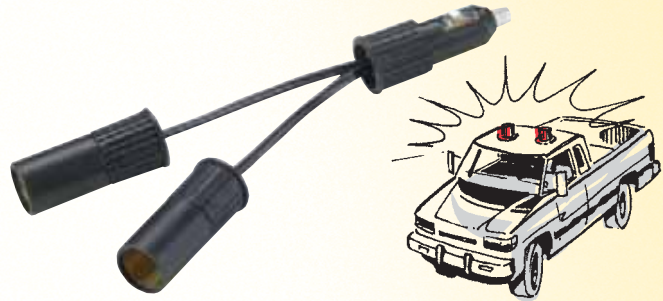
920019 Wire pulling lubricant in vial (15-236-2X3)



Ideal for temporary installation of 2 flashing strobe units or one strobe and a spotlight unit. Fits all 12V lighter sockets.

PART NO.

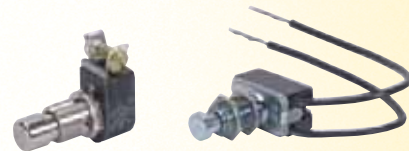
920041 Double adapter unit for cigarette lighter (18943)



PART NO.

920026 Push button switch with pigtails - on or off

920030 Push button switch with terminal screws - momentary on



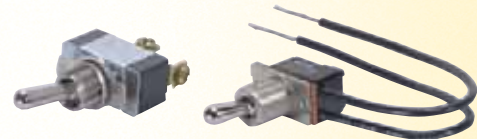
PART NO.

920038 Toggle switch with terminal screws - 20 amp

920039 Toggle switch with terminal screws - 20 amp with rubber boot

920077 Toggle switch with pigtails - 3 amp

920078 Toggle switch with pigtails - 3 amp with rubber boot



PART NO.

920028 Rubber boot for 920026 & 920030

920075 Rubber boot for 920077 switches and lamps purchased prior to 1/1/2010

920076 Rubber boot for 920077 and 920078 purchased after 1/1/2010



PART NO.

560052 Recessed mounting push button switch - on or off, valox body

560053 Recessed mounting push button switch - momentary on, valox body

570032 Surface mounting push button switch - on or off, valox body

570033 Surface mounting push button switch - momentary on, valox body



20 SERIES



920053

Red

920054

Amber

920055

Silver

License

920101

Clear

50, 56, 57, 60 & 100 SERIES



920109

Red, shallow

920110

Amber

shallow

920682

Clear, shallow



920115

Clear, shallow



920112

Clear, deep
back-up
(51BU)

920113

Red, deep
license



920114

Amber, deep
with window

920111

Clear, deep



920116

Red, deep

920117

Amber, deep

920451

Blue, deep



65 SERIES

920227

Clear

920228

Red

920229

Amber

40, 45, 47, 70 & 80 SERIES



920133

Clear, shallow

920134

Red, shallow

920135

Amber, shallow



920139

Clear, shallow
back-up



920142

Smoked,
shallow

920143

Clear, shallow



920141

Red, deep
license



920144

Red, deep

920145

Amber, deep

920388

Blue, deep

920140

Clear, deep
dome

47 SERIES STROBE & BEACON High Hat Roof Mounts



920136

Red

920137

Amber

920138

Blue

920409

Clear

200 SERIES



920048

Clear

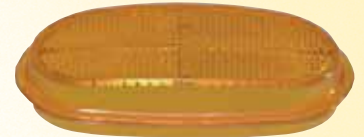
920049

Red

920050

Amber

200V SERIES



920057

Clear

920058

Red

920059

Amber

73 SERIES



920454

Red

920464

Amber

920497

Back-up

77 SERIES



920151

Clear

920152

Red

920153

Amber



920154

Red
[emerg., warning]

920155

Amber
[emerg., warning]



920156

Red, arrow turn

920157

Amber,
arrow turn



PART NO.

201201

201202

201203

201204

LED LENS INSERTS FOR 200 SERIES ALUMINUM LAMPS

Used in Betts low profile, aluminum body surface mount lamps that can be mounted horizontally or vertically. Features (4) light emitting diodes (LED's) in an epoxy sealed polycarbonate lens assembly.

Red, LED lens insert with (1) eyelet & (1) butt connector

Amber, LED lens insert with (1) eyelet & (1) butt connector

Red, LED lens insert with (2) butt connectors

Amber, LED lens insert with (2) butt connectors



PART NO.

221201

221202

221209

LED LENS INSERTS FOR 200 SERIES VALOX LAMPS

Used in Betts valox body surface mount lamps that can be mounted horizontally or vertically. Features (6) light emitting diodes (LED's) in an epoxy sealed REFLEX polycarbonate lens assembly.

Red, LED REFLEX lens insert with (2) eyelets

Amber, LED REFLEX lens insert with (2) eyelets

Clear, LED REFLEX lens insert with (2) eyelets



Shallow lens

PART NO.

510003

510004

510005

510006

510007

510008

LED SINGLE CONTACT LENS INSERTS FOR 50, 56, 57, & 60 SERIES ALUMINUM LAMPS

Used in Betts aluminum body surface and recessed mount lamps. Single contact lens features (4) light emitting diodes (LED's) in an epoxy sealed lens assembly. Available in both shallow and deep lenses.

Red, shallow LED lens insert with (2) butt connectors

Amber, shallow LED lens insert with (2) butt connectors

Red, shallow LED lens insert with (1) eyelet & (1) butt connector

Amber, shallow LED lens insert with (1) eyelet & (1) butt connector

Red, shallow LED lens insert with single contact bulb base

Amber, shallow LED lens insert with single contact bulb base



Deep lens

PART NO.

510013

510014

510015

510016

510017

510018

Red, deep LED lens insert with (2) butt connectors

Amber, deep LED lens insert with (2) butt connectors

Red, deep LED lens insert with (1) eyelet & (1) butt connector

Amber, deep LED lens insert with (1) eyelet & (1) butt connector

Red, deep LED lens insert with single contact bulb base

Amber, deep LED lens insert with single contact bulb base

NOTE: All lens assemblies with butt connectors are provided with heat shrink tubing that must be used to ensure warranty consideration.

LED SINGLE CONTACT LENS INSERTS FOR 56 SERIES VALOX LAMPS

Used in Betts valox body recessed mount lamps. Single contact lens features (4) light emitting diodes (LED's) in an epoxy sealed lens assembly. Available in both shallow and deep lenses.

PART NO.

510001
510002

Red, shallow LED lens insert with (2) eyelets
Amber, shallow LED lens insert with (2) eyelets

PART NO.

510011
510012

Red, deep LED lens insert with (2) eyelets
Amber, deep LED lens insert with (2) eyelets



LED SPECIAL PURPOSE DOUBLE CONTACT LENS INSERTS FOR 50, 56, 57, & 60 SERIES ALUMINUM LAMPS

Used in Betts aluminum body surface and recessed mount lamps. Double contact lens. It features a double contact lens with (4) light emitting diodes (LED's) on low power that increases to 12 LED's on high power in an epoxy sealed lens assembly. Available in both shallow and deep lenses.

PART NO.

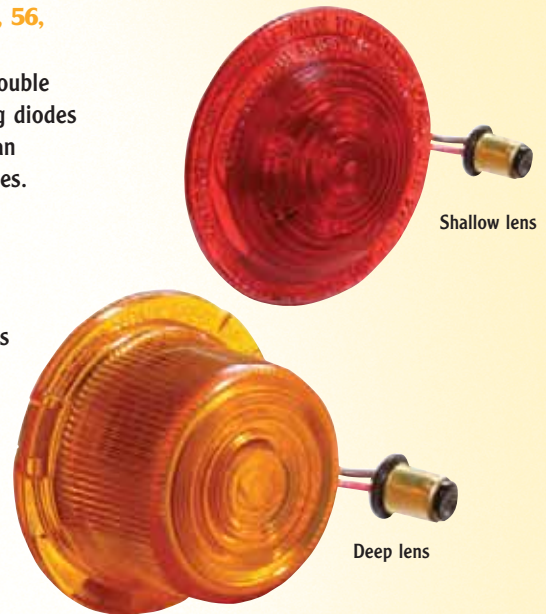
510023
510024
510025
510026
510027
510028

Red, shallow LED lens insert with (3) butt connectors
Amber, shallow LED lens insert with (3) butt connectors
Red, shallow LED lens insert with (1) eyelet & (2) butt connectors
Amber, shallow LED lens insert with (1) eyelet & (2) butt connectors
Red, shallow LED lens insert with double contact bulb base
Amber, shallow LED lens insert with double contact bulb base

PART NO.

510033
510034
510035
510036
510037
510038

Red, deep LED lens insert with (3) butt connectors
Amber, deep LED lens insert with (3) butt connectors
Red, deep LED lens insert with (1) eyelet & (2) butt connectors
Amber, deep LED lens insert with (1) eyelet & (2) butt connectors
Red, deep LED lens insert with double contact bulb base
Amber, deep LED lens insert with double contact bulb base



LED SPECIAL PURPOSE DOUBLE CONTACT LENS INSERTS FOR 56 SERIES VALOX LAMPS

Used in Betts valox body recessed mount lamps. Double contact lens. It features a double contact lens with (4) light emitting diodes (LED's) on low power that increases to 12 LED's on high power in an epoxy sealed lens assembly. Available in both shallow and deep lenses.

PART NO.

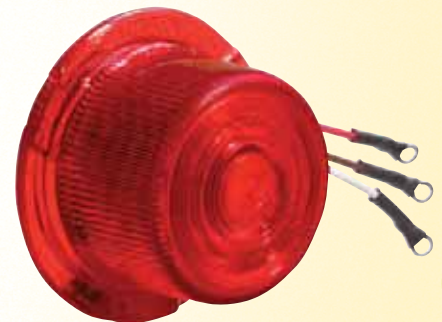
510021
510022

Red, shallow LED lens insert with (3) eyelets
Amber, shallow LED lens insert with (3) eyelets

PART NO.

510031
510032

Red, deep LED lens insert with (3) eyelets
Amber, deep LED lens insert with (3) eyelets



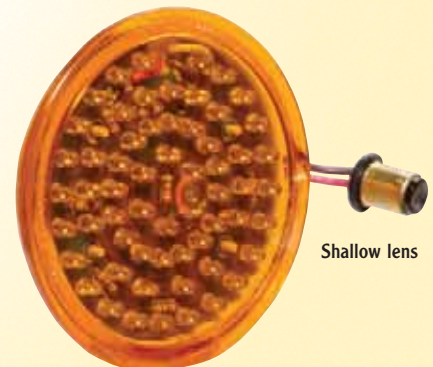
LED LENS INSERTS FOR 40, 45, 47 AND 70 SERIES ALUMINUM LAMPS

Used in Betts aluminum body surface and recessed mount lamps. Double contact polycarbonate lens assembly features (60) light emitting diodes (LED's) on low power to provide tail or marker function that increase to high power output for stop or turn functions. Available in both shallow and deep lenses for 12, 24 or Multi-voltage.

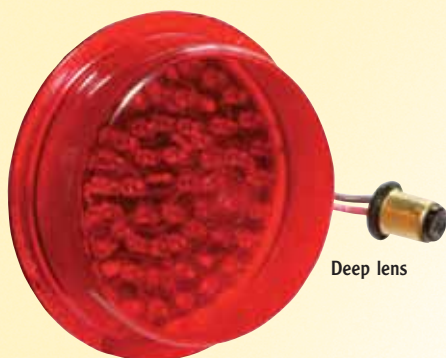
PART NO.

710003
710004
710007
710008
710009
710010

Red, shallow LED lens insert with (1) eyelet & (2) butt connectors, 12 volt
Amber, shallow LED lens insert with (1) eyelet & (2) butt connectors, 12 volt
Red, shallow LED lens insert with (1) eyelet & (2) butt connectors, 24 volt
Amber, shallow LED lens insert with (1) eyelet & (2) butt connectors, 24 volt
Red, shallow LED lens insert with double contact bulb base, 12 volt
Amber, shallow LED lens insert with double contact bulb base, 12 volt



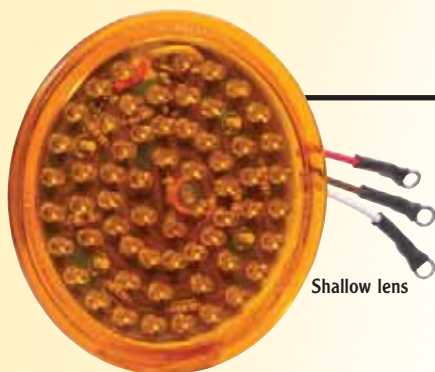
LED Retrofit Lens Assemblies



PART NO.

710013
710014
710017
710018
710019
710020
710021
710022
710023
710024
710030
710033
710036

Red, deep LED lens insert with (1) eyelet & (2) butt connectors
 Amber, deep LED lens insert with (1) eyelet & (2) butt connectors
 Red, deep LED lens insert with (1) eyelet & (2) butt connectors, 24 volt
 Amber, deep LED lens insert with (1) eyelet & (2) butt connectors, 24 volt
 Red, deep LED lens insert with double contact bulb base, 24 volt
 Amber, deep LED lens insert with double contact bulb base, 24 volt
 Red, deep LED lens insert with double contact bulb base, 12 volt
 Amber, deep LED lens insert with double contact bulb base, 12 volt
 Red, shallow LED lens insert with double contact bulb base, 24 volt
 Amber, shallow lens insert with double contact bulb base, 24 volt
 Red, deep license Multi-voltage single diode double contact with bulb base
 Red, deep Multi-voltage single diode double contact with bulb base
 Amber, deep Multi-voltage single diode double contact with bulb base



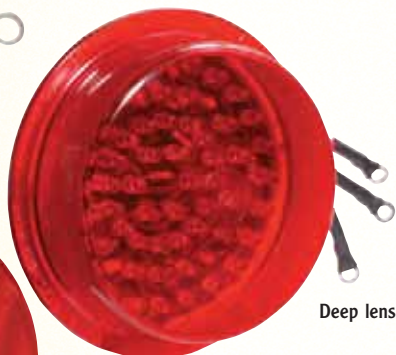
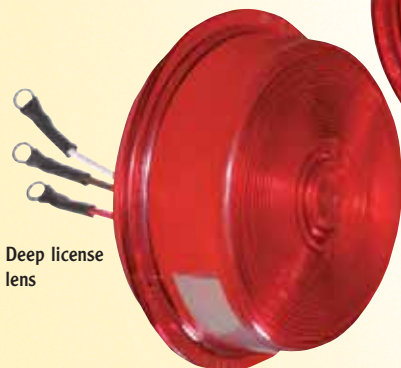
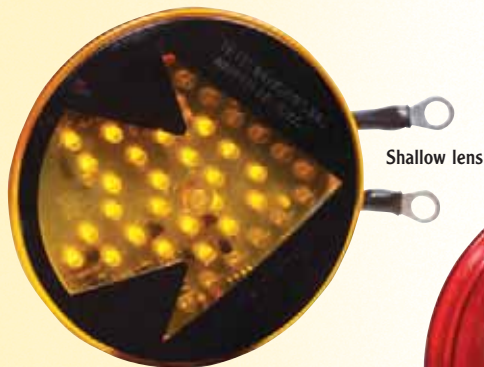
LED LENS INSERTS FOR 40, 45, AND 47 SERIES VALOX LAMPS

Used in Betts valox body surface and recessed mount lamps. Double contact polycarbonate lens assembly features (60) light emitting diodes (LED's) on low power to provide tail or marker function that increase to high power output for stop or turn functions. Available in both shallow and deep lenses for 12 or 24 volt applications.

PART NO.

710001
710002
710005
710006

Red, shallow LED lens insert with (3) eyelets
 Amber, shallow LED lens insert with (3) eyelets
 Red, shallow LED lens insert with (3) eyelets, 24 volt
 Amber, shallow LED lens insert with (3) eyelets, 24 volt

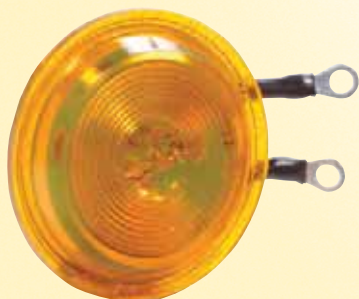


PART NO.

710011 Red, deep LED lens insert with (3) eyelets
710012 Amber, deep LED lens insert (3) eyelets
710015 Red, deep LED lens insert with (3) eyelets, 24 volt
710016 Amber, deep LED lens insert with (3) eyelets, 24 volt
710025 Red, deep license Multi-voltage single diode LED
710038 Amber, shallow sequential arrow LED lens insert with (2) eyelets, Multi-voltage

LED SINGLE CONTACT LENS INSERTS FOR 65 SERIES VALOX LAMPS

Used in Betts Valox body recessed mount lamps. Polycarbonate lens assembly features (3) light emitting diodes (LED's) in an epoxy sealed lens assembly. Available in shallow lens only.



PART NO.

660001
660002
660003
660004

Red, LED lens insert with (2) eyelets
 Amber, LED lens insert with (2) eyelets
 Red, LED lens insert with (2) eyelets, 24 volt
 Amber, LED lens insert with (2) eyelets, 24 volt

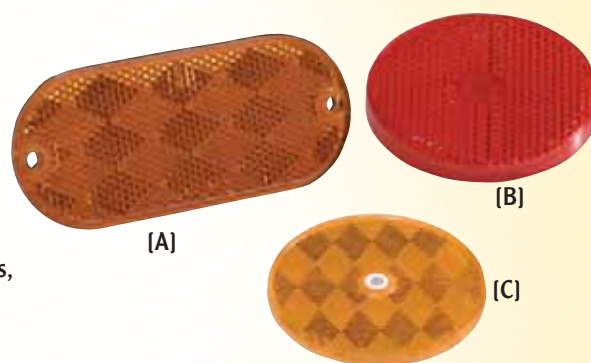
PART NO.	SEALED BEAM BULBS
4411	Clear, flood, 12v, 2,500 cp, par 36
4415A	Amber, 12v, 7,000 cp, par 36
4416	Clear, spot, 12v, 35,000 cp, par 36
4416A	Amber, 12v, 25,000 cp, par 36
4466	Clear, flood, 12v, 1,000 cp, par 36
4505	Clear, spot, 24v, 45,000 cp, par 36
4593	Clear, flood, 24v, 1,500 cp, par 36
4636	Clear, signal, 12v, 90,000 cp, par 46
H7610	Clear, halogen flood, 12v, 5,200 cp, par 36
H7616	Clear, halogen spot, 12v, 70,000 cp, par 36

920775 LED par 36 Bulb, flood

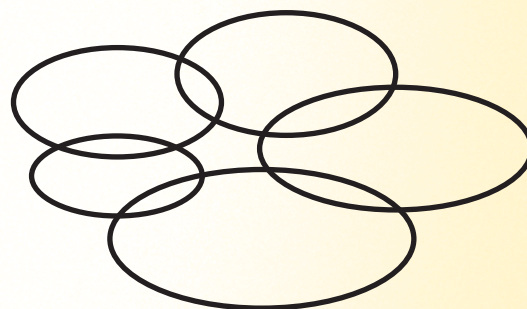


Component Parts

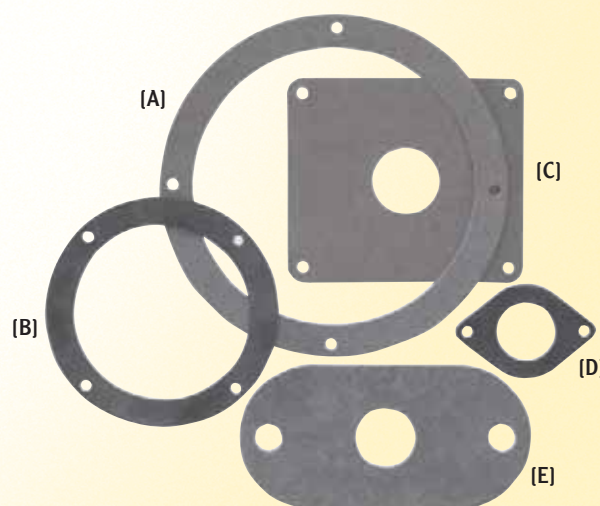
PART NO.	REFLECTORS
920079	2-1/4" diameter, center mount, amber
920080	[C] 2-1/4" diameter, center mount, red (310720)
920081	[B] 3-1/4" diameter, center mount, amber (313370)
920082	3-1/4" diameter, center mount, red (313320)
920083	1-7/8" x 4-3/8" oval, mounting holes on 3.94" centers, red (314020)
920084	[A] 1-7/8" x 4-3/8" oval, mounting holes on 3.94" centers, amber (314010)



PART NO.	O-RINGS
920051	200 series (202)
920056	20 series (22)
920060	200V series (222)
920118	50, 56, 57, 60, 100 series (52)
920146	40, 45, 47, 70, 80, PS series (72), 73
920158	77 series (772)
920248	65 series (OR5)
920600	4 x 8 junction box o-ring for new style cover



PART NO.	GASKETS-MOUNTING
920016	100 series (109)
920023	7 way socket (17705CF)
920024	6 way socket (17706CF)
920031	45 stud mount series (18336CF)
920052	200 series (209)
920073	[D] 20 series (29)
920086	[E] 315 and 325 series (39)
920094	45 series (459)
920106	[C] BD56J series (49)
920128	50 & 57 series (59)
920132	[B] 56 & 60 series (69)
920159	77 series (79)
920165	[A] 40, 47 Valox & 70 series (79)
920408	77 series flangeless (778LF)
920503	40 series black sponge for nose boxes





PART NO.

SHOCK-MOUNT SOCKETS

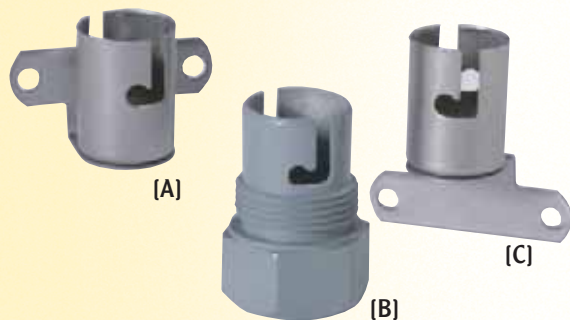
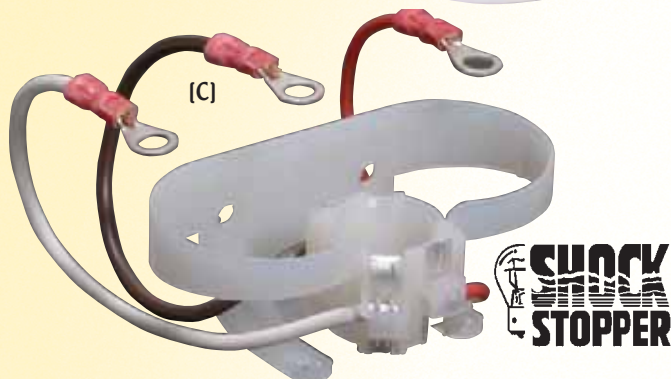
- 920013** [A] Double contact for shallow lens (108LS)
920015 Single contact for shallow lens (108S)
920103 [B] Double contact for deep lens (48LS)
920104 Single contact for deep lens 56 & 57 series lamps (48S with stilts [48LT])
920367 Single contact for 56 & 57 series lamps with shallow lens (48S)

SHOCK-STOPPER BULB SOCKETS

Upgrades many existing lamps including Betts models 40, 45, 47, & 77

PART NO.

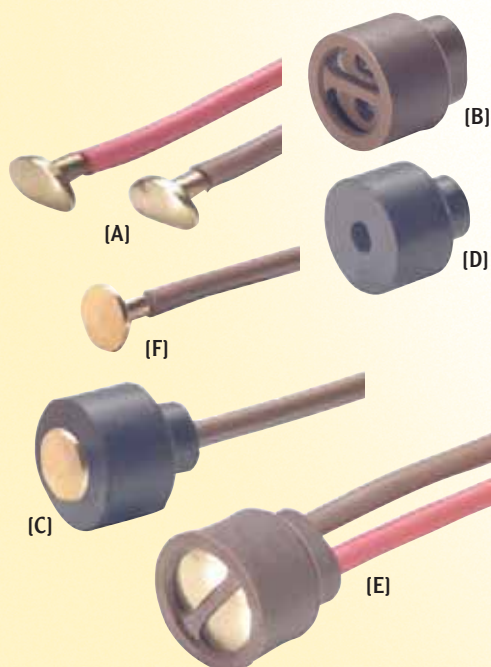
- 920459** [C] Double contact
920460 Single contact



PART NO.

OTHER SOCKETS

- 920012** [A] Single contact for 200 series lamps (108)
920014 [C] Single contact for PS-1D lamp (108-PS-1D)
920125 [B] Single contact for 50, 60 & 70 series lamps with shallow lens (58)
920126 Double contact for 50 & 70 series lamps with shallow lens (58L)
920127 Single contact for 50 series lamps with deep lens (58LT)



PART NO.

PIGTAILS, CONTACTS & GROMMETS

- 920119** [F] 6" brown wire with single contact button (55)
920120 Button only, single contact, for 14 & 16 ga. wire (55A)
920121 Button only, single contact, for 12 ga. wire (55A-12)
920122 6" white ground wire with spade and eyelet (55GW)
920123 [D] Socket grommet, single contact (56)
920124 [C] Pigtail, complete, single contact (package of 12)
920147 [A] Button & wire, double contact (package of 12 red & 12 brown)
920148 Button only, double contact, for 14 & 16 ga. wire (75A)
920149 [B] Socket grommet, double contact (76)
920150 [E] Pigtail, complete, double contact (package of 12 red & 12 brown button & wires with 12 grommets)
920370 18" blue pigtail with spade connector for "F" series lamps (46LW-BLU)
920377 18" white pigtail with spade connector for "F" series lamps (46LW-WHT)
920381 18" blue pigtail with single contact button and grommet



PART NO. GROMMETS

- 920011** Body grommet (106BG)
- 920070** Sealed beam retaining ring, par 46 (27212EP)
- 920071** [E] Extended sealed beam retaining ring with 920143 shallow clear lens, par 36 (27231EP-A)
- 920222** [A] Wire guard for BSXL wire-3/16" I.D., 5/16" hole req., 3/16" wall (G-2752)
- 920223** [B] Wire guard for Betts 3 & 4 cond. cable-7/16" I.D., 11/16" hole req., 3/16" wall (G-2760)
- 920224** [C] Wire guard for Betts 2 cond. cable-5/16" I.D., 9/16" hole req., 1/8" wall (G-2856)
- 920225** Grommet seal for S200 & S200-2 (GR5)
- 920234** [F] Sealed beam retaining ring, par 36 (MG4)
- 920399** [D] Wire guard for Betts 5, 6 & 7 cond. cable-3/4" I.D., 1-1/16" hole req., 3/16" wall (G-2767)
- 920734** [G] LED par 36 grommet

PART NO. PEDESTAL MOUNT LAMP COMPONENTS (80, 81, 805 SERIES)

- 4411** Sealed beam, clear, flood, 12v, 2,500 cp, par 36 (805)
- 4415A** Sealed beam, amber, 12v, 7,000 cp, par 36 (805)
- 4416** Sealed beam, clear, spot, 12v, 35,000 cp, par 36 (805)
- 4416A** Sealed beam, clear, spot, 12v, 25,000 cp, par 36 (805)
- 4466** Sealed beam, clear, flood, 12v, 1,000 cp, par 36 (805)
- 4505** Sealed beam, clear, spot, 24v, 45,000 cp, par 36 (805)
- 4593** Sealed beam, clear, flood, 24v, 1,500 cp, par 36 (805)
- H7610** Sealed beam, clear, halogen flood, 12v, 5,200 cp, par 36 (805)
- H7616** Sealed beam, clear, halogen spot, 12v, 70,000 cp, par 36 (805)
- 920013** Socket, double contact (80 & 81)
- 920015** Socket, single contact (80 & 81)
- 920034** Carriage bolt (805)
- 920039** Switch, 20 amp toggle with boot (805)
- 920071** Extended sealed beam retaining ring with 920143 lens (805)
- 920076** Rubber boot for 20 amp toggle switch (805)
- 920166** Washer, lock (80)
- 920167** Nut, lock (80)
- 920168** Washer, flat (80)
- 920171** Cap screw, 1/4" - 20 x 1/2" (805)
- 920173** Nut, hex head, 9/16" (805)
- 920174** Washer, flat, 9/16" (805)
- 920234** Sealed beam retaining ring, par 36 (805)
- 920370** 18" blue lead wire with spade connector (805)
- 920377** 18" white lead wire with spade connector (805)
- 920398** Stud, 9/16" (81)
- 920630** Mounting bracket, aluminum, painted gray (920033)





USING THE TRUCK-LITE LIGHTING CATALOG

Throughout the catalog, you will find the following symbols. Please educate yourself on what the meaning of each symbol is by taking a moment to read about each.

INT

Product Sections

This catalog is divided into sections by product category as outlined in the Table of Contents found on the following two pages. Each section is easily identified by a colored bar on the outer edge of each page. See entire catalog on the web.



Upgrade to LED

Indicates an incandescent product that has a LED model available. The LED retrofit will be a quick and easy change out.



Limited Warranty

Truck-Lite extends a Limited Warranty on a variety of products throughout the catalog. Warranties are identified within the product element. Complete warranty information is explained in detail on the Truck-Lite web site.



OmniVolt Products

Lighting products that will operate equally in electrical systems that range from 10 to 30 volts.

NEW

New Products

New products and accessories are added continuously and are readily identified by the New Product symbol either in the page heading, in the product group or by the part number.



Packaged Products

Part number ending in D or 1 with a red ♦ indicate retail packaging.



Signal Stat Products

Signal Stat products are identified throughout the catalog with the logo in the product group.



Diamond Shell® Products

Products marked with the Diamond Shell® logo are manufactured using a material that protects against damage from chemicals and solvents such as gasoline, motor oil, antifreeze, washer fluid, HD detergent and others. Diamond Shell products are identified with the Diamond Shell® symbol and a blue ♦ next to the part number.



Rubbolite Products

Rubbolite products are identified throughout the catalog with the logo in the product group.



Permanently affixed reinforced
flange mount version



6 Diode Pattern

Electronics completely sealed in
epoxy to resist corrosion & moisture

42 Diode Pattern

17 Diode Pattern

Advanced optics design creates
a controlled beam pattern

Super 44® Stop, Turn & Tail LED 4" Sealed 6, 17 & 42 Diode Pattern

Material:

- Polycarbonate or acrylic lens, housing & flange
- PVC grommet
- 16 gauge wire

Light Source:

- 6 diode designed at 14v, .03/.3 amp
- 42 diode designed at 14v, .1/.5 amp
- 17 diode designed at 28v, .25/.5 amp

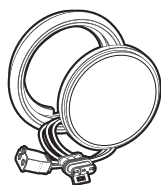
Recommended Accessories:

- Mounting: Pages 239-241
- Plugs: Pages 195-198

FMVSS:

- I6,P2,S2(3), T

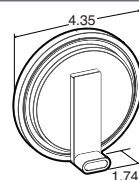
- U.S. Patent #6654172 & U.S. Registered TM #3483147
- Less current draw, resulting in increased battery & alternator life while allowing more power for other vehicle requirements
- Faster illumination offers significant safety benefit for following drivers to react quicker, resulting in an average distance of 3' for every 10 m.p.h.
- LEDs have no filament, therefore are extremely resistant to shock & vibration



Grommet Kits

- 44030R** Red, 6 diode
- ◆ **44092R** Red, 6 diode
- 44002R** Red, 42 diode

Kits include lamp, 40700 grommet
& 94706 adapter



LED Lamp Only

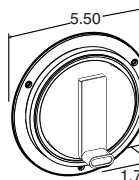
- 44302R** Red, 6 diode
- ◆ **44982R** Red, 6 diode
- 44202R** Red, 42 diode
- ◆ **44882R** Red, 42 diode
- 44253R** Red, 17 diode, 24 volt



Gray Flange Kits

- 44032R** Red, 6 diode
- 44022R** Red, 42 diode

Kits include lamp w/flange & 94706 adapter



Lamp & Gray Flange

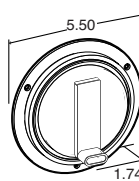
- 44322R** Red, 6 diode
- ◆ **44983R** Red, 6 diode
- 44222R** Red, 42 diode
- ◆ **44883R** Red, 42 diode



Black Flange Kits

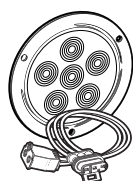
- 44036R** Red, 6 diode
- 44026R** Red, 42 diode

Kits include lamp w/flange & 94706 adapter



Lamp & Black Flange

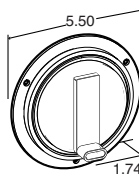
- 44326R** Red, 6 diode
- ◆ **44986R** Red, 6 diode
- 44226R** Red, 42 diode
- 44266R** Red, 17 diode, 24 volt



White Flange Kits

- 44038R** Red, 6 diode

Kits include lamp w/flange & 94706 adapter



Lamp & White Flange

- 44328R** Red, 6 diode
- ◆ **44988R** Red, 6 diode

Super 44®
Stop, Turn & Tail
LED 4" Sealed
6 Diode Pattern
Hard Wired

Material:

- Polycarbonate lens, housing & flange
- 16 gauge wire

Light Source:

- Light Emitting Diodes (LEDs)
- Designed at 14v, .03/.3 amp

Recommended Accessories:

- Mounting: Pages 241-243

FMVSS:

- I6,P2,S2(3), T

LED array dissipates heat more effectively,
 resulting in greater light output

Electronics completely
 sealed in epoxy to
 resist corrosion
 & moisture

Advanced optics
 design creates a greater
 dispersion of light

High impact polycarbonate lens

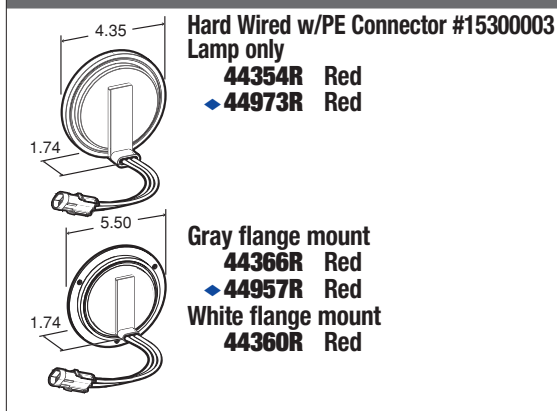
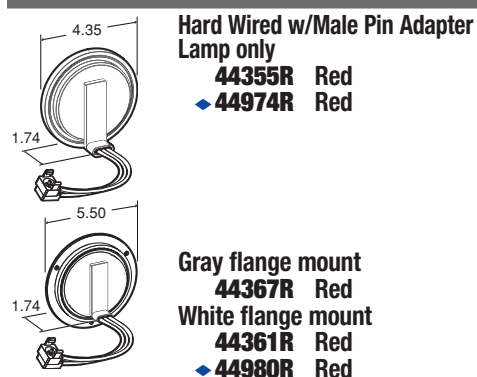
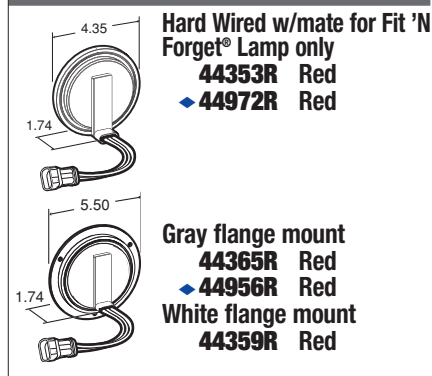
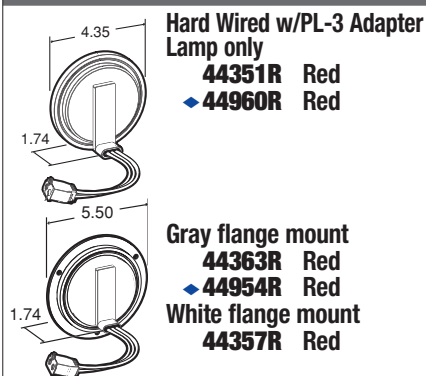
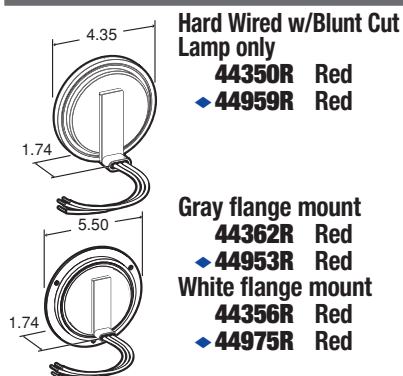
Hard-wired
 design
 eliminates
 pin
 corrosion



UNI

**S / T / T & F / P / T
 LIGHTING PRODUCTS**

- U.S. Patent #6654172 & U.S. Registered TM #3483147
- Hard-wired design results in decreased depth compared to integral plug versions, allowing for mounting in confined spaces
- LEDs have no filament, therefore are extremely resistant to shock & vibration, a major cause of failure for lamps with incandescent bulbs
- Less current draw, resulting in increased battery & alternator life while allowing more power for other vehicle requirements
- Faster illumination offers significant safety benefit for following drivers to react quicker, resulting in an average distance of 3' for every 10 m.p.h.



2011 FULL LINE PRODUCT CATALOG



Constructed of PVC

Back lip installs over any Super® 44 Series LED lamp flange which prevents lamp from being removed through mounting hole



Grommet securely mounts lamp in a position preventing its quick removal

Mounts in any standard 4" application

- Offers theft resistance by eliminating opportunity to remove lamp from outside of vehicle
- Access to back of mounting application required to remove lamp
- With "Pull-Through" design, flanged lamp is partially installed from behind & mounting lip is pulled through on front of mounting application
- PVC construction allows lamp to fall back into mounting box upon great impact, reducing chance of damage
- Easily mounts over any Truck-Lite Super 44® series 4" flanged LED lamp

44710 Security grommet (lamp sold separately)

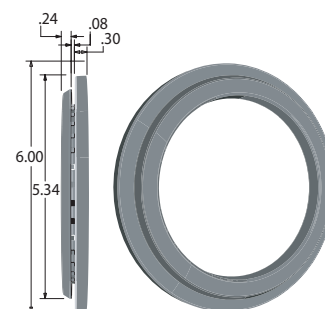
44® Series Security Grommet For Flanged Lamps

Material:

- PVC grommet

RECOMMENDED HOLE SIZES FOR GROMMET INSTALLATION:

PLATE THICKNESS	HOLE SIZE
1/16"	4.47"
1/8"	4.50"
3/16"	4.50"
1/4"	4.53"
3/8"	4.56"



Stainless steel construction

Mounting tabs allow for snap-and-go mounting from front

Flush, screw-less surface creates stylish appearance



Foam retention ring helps prevent water intrusion

44® Series Security Flange For Non-Flanged Lamps

Material:

- Stainless steel ring
- EPDM mounting gasket

Kit Components:

44034R kit:

- 1 - 44334R lamp & security flange
- 1 - 94706 adapter plug

Replacement Parts:

- 97334 - flange for 7 & 10 gauge applications
- 97337 - flange for 8 gauge applications

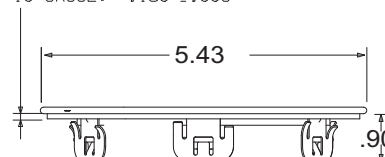
- Helps protect LED lamp from theft by locking them in place
- Snap-and-go installation greatly reduces mounting time & eliminates need for screw holes or mounting screws
- Stainless steel construction makes for a chrome-like, shiny appearance
- Fits Truck-Lite Super 44 6 diode LED lamps

44334R Lamp & flange kit, 7, 8 & 10 gauge

44034R Lamp, pigtail & flange kit, 7, 8 & 10 gauge

Make Lamp Installation A Snap!
No Screws,
No mounting
holes

CUSTOMER PANEL THICKNESS
7 GAUGE: .187 ± .015
8 GAUGE: .160 ± .006
10 GAUGE: .130 ± .006



Super 44® Front, Park & Turn LED 4" Sealed 60 Diode Pattern

Material:

- Polycarbonate or acrylic lens, housing & flange
- PVC grommet
- 16 gauge wire

Light Source:

- Light Emitting Diodes (LEDs)
- Designed at 14v, .1/.75 amp

Kit Components:

44024Y black flange:

- 1 - 44224Y lamp & flange
- 1 - 94706 adapter plug

44023Y gray flange:

- 1 - 44223Y lamp & flange
- 1 - 94706 adapter plug

44003Y & 44071Y grommet:

- 1 - 44203Y or 44871Y lamp
- 1 - 40700 grommet
- 1 - 94706 adapter plug

Recommended Accessories:

- Mounting: Pages 241-243
- Plugs: Pages 197-200

FMVSS:

- I6,P

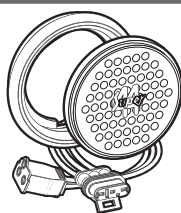


DiamondShell

LIFETIME
WARRANTY
SEE PAGE 275

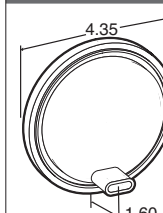
Super 44

- LEDs have no filament, therefore are not susceptible to shock & vibration, a major cause of failure for incandescent bulb lamps
- Less current draw, resulting in increased battery & alternator life while allowing more power for other vehicle requirements
- Front, Park and Turn lamps meet stringent SAE and NHTSA requirements



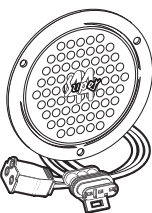
LED Grommet Kits

- 44003Y Yellow
- 44071Y Yellow



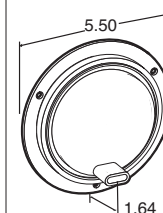
LED Lamp

- 44203Y Yellow
- 44871Y Yellow



LED Gray Flange Kits

- 44023Y Yellow
- LED Black Flange Kits
- 44024Y Yellow



LED Lamp & Gray Flange

- 44223Y Yellow
- 44877Y Yellow
- LED Lamp & Black Flange
- 44224Y Yellow
- 44878Y Yellow
- LED Lamp & White Flange
- 44233Y Yellow

Stop/Turn/Tail & Front/Park/Turn LED 4" Round 24 Diode Pattern

Material:

- Polycarbonate lens & housing

Light Source:

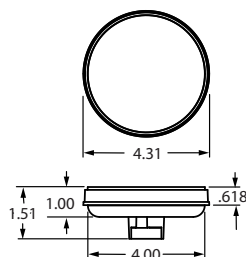
- Light Emitting Diodes (LEDs)
- 12v lamp designed at 13.5v, .030/.380 amp

Recommended Accessories:

- Mounting: Pages 241-243
- Plugs: Pages 197-200

FMVSS:

- Red - I6,P2, S2(3), T
- Yellow - I6,P2, P



Signal-Stat

2
YEAR
WARRANTY
SEE PAGE 275

- Popular on owner/operator show trucks
- Uses standard Right Angle connection
- Unique LED array displays a full pattern light output design
- Epoxy encapsulated electronics prevents damage from moisture & corrosion
- Less current draw, resulting in increased battery & alternator life while allowing more power for other vehicle requirements
- LEDs have no filament, therefore are extremely resistant to shock & vibration, a major cause of failure for lamps with incandescent bulbs

- 4050 Red, lamp
- 4050A Yellow, lamp
- 4051 Red, w/clear lens
- 4051A Yellow, w/clear lens



SEE PAGE 275

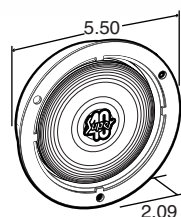


SEE PAGES 6-9

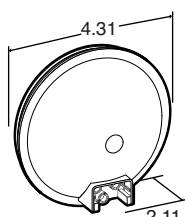


- Uniquely designed shock-mount extends lamp life
- DiamondShell versions available for additional protection
- Available with or without reflectorized lens

*8 Sq. in. (illuminating) stop/turn lens area for vehicles under 80 in. wide. Meets reflex, tail or clearance function for vehicles over 80 in. wide.



Super 40 Lamp & Gray Flange
40258R Red
40258Y Yellow
Super 40 Lamp & Black Flange
40259R Red



Super 40 Lamps
40242R Red
40248R Red reflectorized*
40898R Red
40242Y Yellow
40898Y Yellow



SEE PAGES 6-9

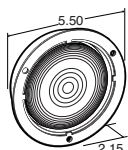


SEE PAGE 275

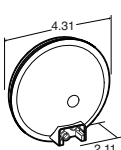


- Heavy duty bulb last longer
- Uniquely designed shock-mount extends lamp life
- Available with or without reflectorized lens
- Flush mount grommets are designed for mounting in a 4-1/2" hole

*8 Sq. in. (illuminating) stop/turn lens area for vehicles under 80 in. wide. Meets reflex, tail or clearance function for vehicles over 80 in. wide.



Model 40 Lamp & Gray Flange
40226R Red, reflectorized*
Model 40 Lamp & Black Flange
40233R Red
40233Y Yellow



Model 40 Lamps
40202R Red
40215R Red, reflectorized*
40209R Red, 24v
40232R Red, 24v, reflectorized*
40202Y Yellow
40209Y Yellow, 24v



Model 40 Grommet Kits
40002R Red
40015R Red, reflectorized*
40009R Red, 24v
40002Y Yellow
40009Y Yellow, 24v

Super 40® Stop/Turn/Tail & Front/Park/Turn 4" Sealed

Material:

- Polycarbonate or acrylic lens & housing
- ABS flange
- PVC grommet
- 16 gauge wire

Light Source:

- Heavy duty bulb
- Designed at 13.5v, 2.16/.47 amp, 32/2 cp

Recommended Accessories:

- Mounting: Pages 241-243
- Plugs: Pages 197-200

FMVSS:

- Non-reflectorized
- Red - I6, P2, S2, T
- Yellow - I6, P2, P, O, T, C, W

40® Series Stop/Turn/Tail & Front/Park/Turn 4" Sealed

Material:

- Polycarbonate lens & housing
- ABS flange
- PVC grommet
- 16 gauge wire

Light Source:

- Heavy duty dual filament bulb
- 12v designed at 12.8v, 2.1/.48 amp, 32/2 cp
- 24v designed at 28v, .93/.34 amp, 32/6 cp

Kit Components:

40002R/Y grommet kits:

- 1 - 40202R/Y 12v lamp
- 1 - 40700 grommet
- 1 - 94993 right angle PL3

40009R/Y grommet kits:

- 1 - 40209R/Y 24v lamp
- 1 - 40700 grommet
- 1 - 94993 right angle PL3

40015R grommet kit:

- 1 - 40215R lamp
- 1 - 40700 grommet
- 1 - 94993 right angle PL3

Recommended Accessories:

- Mounting: Pages 241-243
- Plugs: Pages 197-200

FMVSS:

- Non-reflectorized
- Red - I6, P2, S2, T
- Yellow - I6, P2, P, O, T, C, W

Male Pin 40 Stop/Turn/Tail 4" Sealed

Material:

- Polycarbonate lens & housing
- PVC grommet
- 16 gauge wire

Light Source:

- Heavy duty dual filament cartridge bulb
- Designed at 13.5v, 2.16/.47 amp, 32/2 cp

Kit Components:

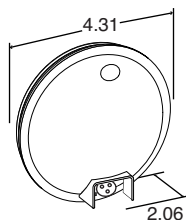
- 49002R grommet kit:**
- 1 - 49202R lamp
 - 1 - 40700 grommet
 - 1 - 96107 plug

Recommended Accessories:

- Mounting: Pages 241-243

- Shock mount absorbs road shock & vibration
- Welded connections eliminate failures caused by arcing
- **Replaces Grote® #53102**

49002R Grommet, kit
49202R Red lamp



UNI

S / T / T & F / P / T
LIGHTING PRODUCTS

40® Series Stop/Turn/ Tail & Front/Park/ Turn Clear Back 4" Sealed

Material:

- Polycarbonate lens & housing
- PVC grommet • 16 gauge wire

Light Source:

- Designed at 12.8v, 2.1/.48 amp dual filament bulb rated at 32/2 cp

Kit Components:

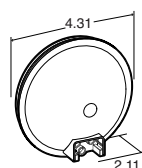
- 40006R grommet kit:**
- 1 - 40206R lamp
 - 1 - 40700 grommet
 - 1 - 94993 plug

Recommended Accessories:

- Mounting: Pages 241-243
- Plugs: Pages 197-200

- Features clear back housing
- Not recommended for clearance marker applications
- Grommet kit features flush mounting in a 4-1/2" hole

40006R Red, grommet kit
40206R Red
40206Y Yellow



40006R shown



SEE PAGE 273

40® Economy Stop/Turn/ Tail & Front/Park/Turn 4" Sealed

Material:

- Polycarbonate lens & housing
- ABS flange
- PVC grommet
- 16 gauge wire

Light Source:

- Designed at 12.8v, 2.1/.48 amp dual filament bulb rated at 32/2 cp

Kit Components:

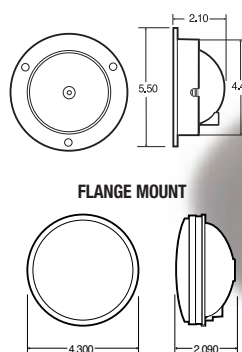
- 40028R/40028Y grommet kit:**
- 1 - 40282R/Y lamp
 - 1 - 40700 grommet
 - 1 - 94993 plug

Recommended Accessories:

- Mounting: Pages 241-243
- Plugs: Pages 197-200

- Grommet kit features flush mounting in a 4-1/2" hole
- Flange kits feature a high impact plastic affixed to lamp

40028R Red, grommet kit
40028Y Yellow, grommet kit
40029R Red, gray flange kit
40229R Red, lamp & gray flange
40282R Red, lamp
40282Y Yellow, lamp
40285R Red, reflectorized



FLANGE MOUNT

LAMP ONLY



40282R shown



SEE PAGES 6-9

40® Series Stop/Turn/ Tail & Front/Park/Turn 4" Bulb Replaceable

Material:

- Polycarbonate or acrylic lens & housing
- Cam-in socket assembly
- PVC grommet

Light Source:

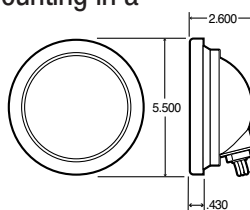
- Bulb: #1157 bulb

Replacement Parts:

- 99010R red lens & housing
- 99010Y yellow lens & housing
- 94938 socket assembly

- Grommet kit includes lens, housing, socket assembly with bulb, grommet & ground screws
- Grommet features flush mounting in a 4-1/2" hole

40302R Red, grommet kit
40302Y Yellow, grommet kit



SEE PAGES 6-9

2011 FULL LINE PRODUCT CATALOG

SIGNAL-STAT LED FEATURES & BENEFITS

The Signal-Stat line of LED Lighting Products has been engineered to offer high quality LED lighting technology, while using full pattern optics popular among owner operators. With clear-lens, red and amber lighting products, the Signal-Stat LED line is capable of offering the clean, streamlined appearance popular among show trucks as well. This complete line of LED lamps offer solutions for a growing number of heavy-duty lighting applications. From stop, turn & tail lighting to back-up lamps, the line is able to retrofit virtually all existing trailers, through the use of standard industry plug connections. All the LED lamps are tested for performance & quality providing operators and smaller fleets quality lighting products made to the highest American standards.



FEATURES & BENEFITS INCLUDE:

- Two year limited warranty
- Popular on owner/operator & show trucks feature standard connections for easy retrofit
- Unique Diode LED arrays display a full pattern light output design
- Encapsulated electronics prevent damage from moisture & corrosion, with less current draw.
- LEDs have no filament, therefore are extremely resistant to shock & vibration.

Work Lighting

Round & Rectangular, 8 & 10 Diode Patterns

NEW



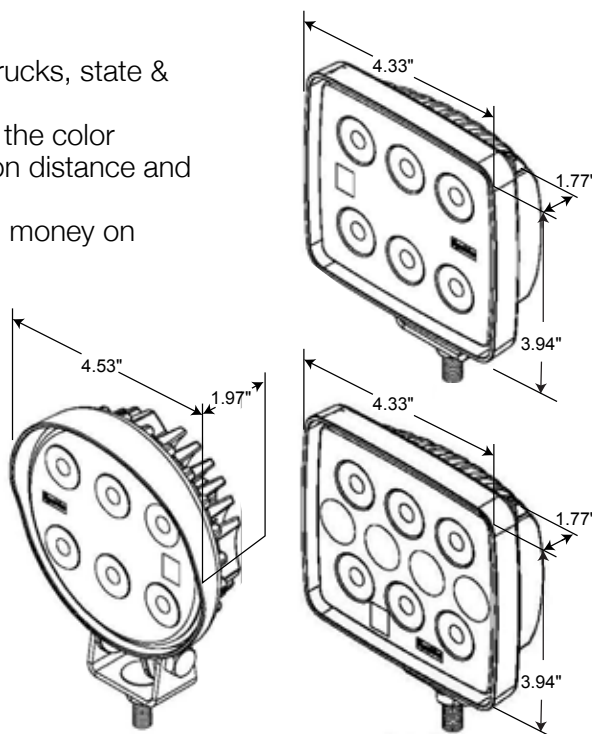
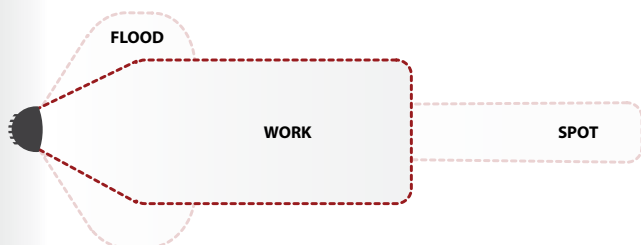
Material:

- Polycarbonate lens
- Aluminum housing
- Stainless steel mounting hardware
- 20" blunt cut cable wire

Light Source:

- Light Emitting Diodes (LEDs)
- 8 diode pattern designed at 9-36v, 8w, 500-580 lumens
- 10 diode pattern designed at 9-36v, 10w, 750 lumens

- Ideal for light utility, construction, agricultural, airport & tow trucks, state & highway departments
- Provides a brighter, crisper and whiter light output, closer to the color temperature of daylight, dramatically improving light projection distance and overall visibility
- Offers longer life than incandescents lamps, saving time and money on replacements
- Operates from 9 to 36 volts without adjustment



- 8150** Clear, Round 8 Diode Lamp
8155 Clear, Rectangular 8 Diode Lamp
8160 Clear, Rectangular 10 Diode Lamp

Stop/Turn/Tail, Front/Park/Turn & Clearance/Marker
4" Round, 24 Diode Pattern

Material:

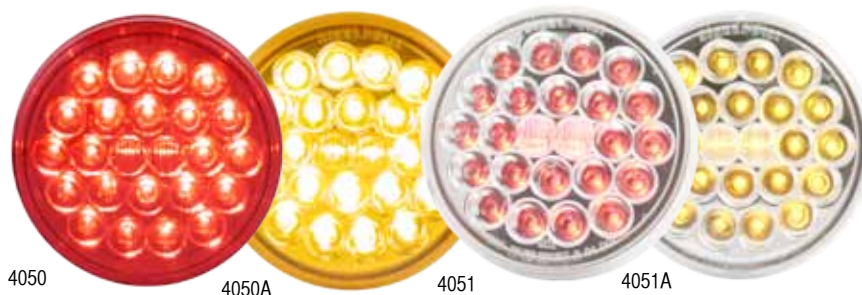
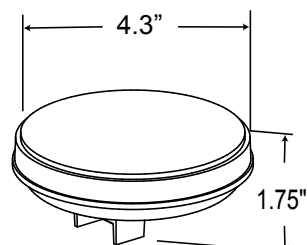
- Polycarbonate lens & housing

Light Source:

- Light Emitting Diodes (LEDs)
- 12v lamp designed at 13.5v, .030/.380 amp

Recommended Accessories:

- 40700 grommet
- 94993 plug



- Uses standard Right Angle PL-3 connection
- 24 Diode LED array displays a full pattern light output design
- Clear lens model offers unique look & style

4050 Red, Lamp

4050A Yellow, Lamp

4051 Red, w/clear lens

4051A Yellow, w/clear lens

Stop/Turn/Tail, Front/Park/Turn & Clearance/Marker
6" Oval, 24 Diode Pattern

Material:

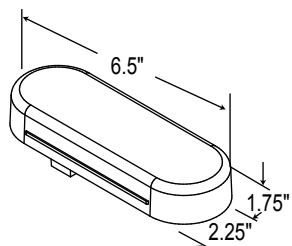
- Polycarbonate lens & housing

Light Source:

- Light Emitting Diodes (LEDs)
- 12v lamp designed at 13.5v, .030/.380 amp

Recommended Accessories:

- 60700 grommet
- 94993 plug



- Uses standard Right Angle PL-3 connection
- 24 Diode LED array displays a full pattern light output design
- Clear lens model offers unique look & style

6050 Red, Lamp

6050A Yellow, Lamp

6051 Red, w/clear lens

6051A Yellow, w/clear lens

Back-Up

4" Round & 6" Oval, 24 Diode Pattern

Material:

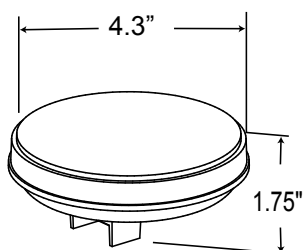
- Polycarbonate lens & housing

Light Source:

- Light Emitting Diodes (LEDs)
- 12v lamp designed at 13.5v, .030/.380 amp

Recommended Accessories:

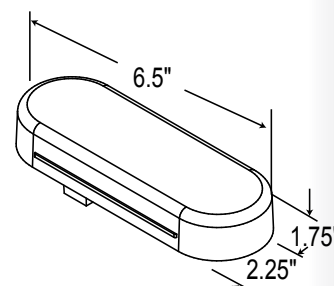
- 40700 grommet, round
- 60700 grommet, oval
- 94993 plug



- Uses standard Right Angle PL-3 connection
- 24 Diode LED array displays a full pattern light output design, for use in 2-lamp system
- Legal mounted in both horizontal and vertical positions

4060C Clear, 4" Round Back-Up

6060C Clear, 6" Oval Back-Up



Stop/Turn/Tail, Front Park & Rear Turn

Rectangular Sealed, 24 Diode Pattern

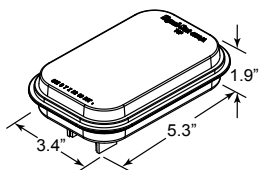
**Material:**

- Acrylic lens, housing & flange
- Light Source:**
- Light Emitting Diodes (LEDs)
- Designed at 13.5v, .03/.38 amp

Recommended Accessories:

- 45700 grommet
- 94993 plug

- Standard right angle PL-3 connection
- Unique 24 diode LED array displays full pattern light output
- Acrylic lens's are resistant to damage from harsh cleaning agents



4550 Red, Lamp
4550A Yellow, Lamp

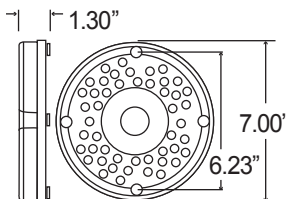
Stop/Turn/Tail & Rear Turn

7" Sealed, 47 Diode Pattern

**Material:**

- Acrylic lens
- ABS housing
- 18 gauge wire
- Light Source:**
- Designed at 13.5v
- .555-.070 major
- .032-.040 minor
- .600-.700 yellow

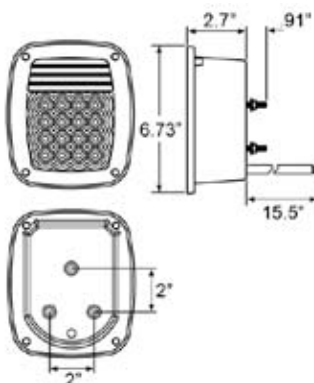
- Popular in bus applications
- 47 diode pattern
- Features over-voltage & spike protection circuitry



91244R Red
91243Y Yellow
91242R Red, w/Reflex
91241Y Yellow, w/Reflex

Multi-Function Stop/Turn/Tail Lamp

5060 Shown

**Material:**

- Polycarbonate lens & housing
- Acrylic S/T/T & B/U lens
- 18 gauge 3 wire

Light Source:

- Light Emitting Diodes (LED's)
- 16 Diode Stop/Turn/Tail
- 5 Diode License
- 36 Diode Back-Up
- Designed at 12v,
- .731-.852 amp major
- .308-.470 amp minor

- 3 stud mounting design w/ground function
- Stop/Turn/Tail lamps with integral reflector design

5060 Roadside w/license
5061 Curbside

Single & Double Face Front Park/Turn, Rear Turn, & Stop/Turn/Tail Pedestal Lamps

4" Round Sealed, 21 Diode Pattern



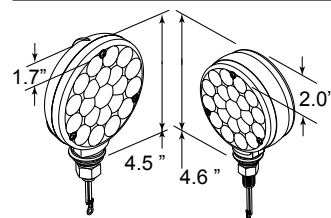
- 21 diode pattern
- Chrome plated housing
- Available in double-sided, red/yellow versions or as single-sided red or yellow versions with a chrome plated back

Material:

- Polycarbonate lens
- Chrome plated housing

Light Source:

- Light Emitting Diodes (LEDs)
- Double face designed at 12.8v
- major .625 +/- .035 amp
- minor .046 +/- .015 amp
- Single face designed at 12.8v
- major .252 +/- .035 amp
- minor .019 +/- .015 amp
- major .476 +/- .035 amp
- minor .027 +/- .015 amp



2751 Red, Lamp
2751A Yellow, Lamp
2750 Red/Yellow Double Faced Lamp

Double Face Pedestal Lamps

Square Sealed, 9/18 Diode Pattern

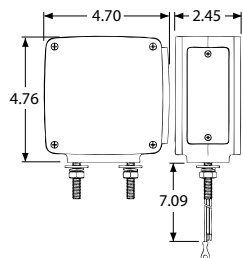
Material:

- Polycarbonate lens
- Chrome plated housing

Light Source:

- Light Emitting Diodes (LEDs)
- Designed at 12.8v
- Major 0.302 amp - 0.452 amp

- 9 diode pattern (per side) with chrome-plated housing
- Double-stud mount



- 2758** Red/Yellow Lamp, Curbside
2759 Red/Yellow Lamp, Roadside



Double Face Pedestal Lamps

Square Sealed, 18 Diode Pattern

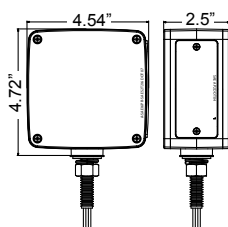
Material:

- Polycarbonate lens
- Chrome plated housing

Light Source:

- Light Emitting Diodes (LEDs)
- Yellow/Yellow designed at 12.8v
- Major 0.48 amp - 0.54 amp
- Red/Yellow designed at 12.8v
- Major 0.302 amp - 0.452 amp

- 18 diode pattern with chrome-plated housing
- Single-stud mount



- 2752** Yellow/Yellow Lamp
2753 Red/Yellow Lamp, Roadside
2756 Red/Yellow Lamp, Curbside



Trailer Lighting Kit

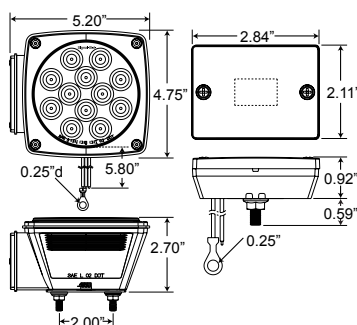
Material:

- Polycarbonate lens and housing
- 18 gauge 3 wire

Light Source:

- Light Emitting Diodes (LEDs)
- 12 Diode Stop/Turn/Tail
- 1 Diode Side Marker Lamp
- 1 Diode Clearance /Marker Lamp
- Designed at 12v, .731-.852A

- Solid-state LED lamps offer greater resistance from damage due to vibration
- Roadside lamp includes License Plate Lamp
- Popular on camping, motorcycle, horse & utility trailers
- Kit provides all legal lamps & reflective products for trailer less than 80" wide
- Rugged plastic design prevents corrosion



- 5050DK** Trailer Kit
5051DK Trailer Kit, w/Marker Lights
5052AD Marker Lamp
5053D S/T/T & License Lamp, Roadside
5054D S/T/T Lamp, Curbside



- Polycarbonate lens & housing
 - 18 gauge wires
- Light Source:**
- Light Emitting Diodes (LED)
 - Designed at 12.8v, .05 amp

Material:

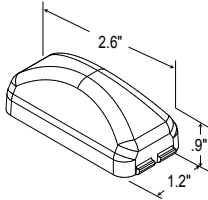
- Polycarbonate lens & housing

Light Source:

- Light Emitting Diodes (LEDs)
- Designed at 13.5v, .05 amp

Recommended Accessories:

- 15700 grommet
- 94964 plug



- Standard PL-10 connection
- 3 diode LED pattern (clear lenses), 2-3 diode LED pattern (red/yellow lenses)
- Meets SAE 592e P2 standards

1560 Red
1560A Yellow

1561 Red w/clear lens
1561A Yellow w/clear lens

Material:

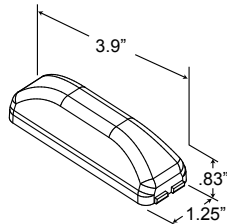
- Polycarbonate lens & housing

Light Source:

- Light Emitting diodes (LEDs)
- Designed at 13.5v, .05 amp

Recommended Accessories:

- 19721 mount with hot wires



- Standard Male Pin connection
- 4 diode LED pattern
- Meets SAE 592e P2 standards

1960 Red
1960A Yellow

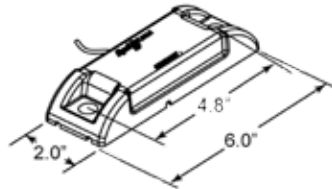
1961 Red w/clear lens
1961A Yellow w/clear lens

Material:

- Acrylic lens & housing
- 16 gauge wire

Light Source:

- Light Emitting Diodes (LEDs)
- Designed at 13.5v, .12 amp



- Red/Yellow lenses feature reflectorized design
- Optional gaskets to improve seal between lamp & body
- Acrylic lens & housing
- Meets SAE 592e P2 standards

2150 Red
2150A Yellow



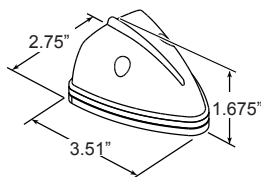
2152 Red w/clear, non-reflectorized lens
2152A Yellow w/clear, non-reflectorized lens

Material:

- Polycarbonate lens

Light Source:

- Light Emitting Diodes (LEDs)
- Designed at 12.8v, 0.18-0.23 amp



- 13 diode pattern
- Hard-wired design
- Suitable for PC requirements when mounted on a 45° angle

1155 Red
1155A Yellow



Marker & Clearance 2" x 4" Rectangular, 16 Diode Pattern



- Hard-wired design eliminates pin corrosion
- 16 diode double bullseye LED pattern
- Meets SAE 592e P2 standards

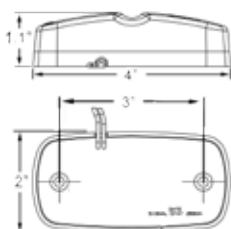
2660 Red
2660A Yellow
2661 Red w/clear lens
2661A Yellow w/clear lens

Material:

- Polycarbonate lens & housing
- Light Source:**
- Light Emitting Diodes (LEDs)
- Designed at 13.5v, .08 amp

Replacement Parts:

- 99238R Red, lens
- 99238Y Yellow, lens
- 99238C clear lens



Marker & Clearance 14 Diode Pattern

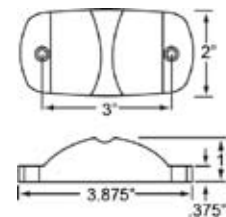


- Hard-wired design eliminates pin corrosion
- 14 diode pattern
- Meets SAE 592e P2 standards
- Fits standard mounting holes

2674 Red
2674A Yellow

Material:

- Polycarbonate lens & housing
- 16 gauge wire
- Light Source:**
- Light Emitting Diodes (LEDs)
- Designed at 12.8v, .12 amp



Reflex Clearance Side Marker Kit 2-12 Diode Pattern

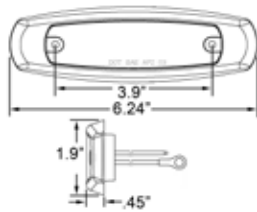


- Popular Peterbilt replacement
- Hard-wired design eliminates pin corrosion
- Kit includes lamp & chrome bezel
- 2 or 12 diode pattern

2672 Red, Reflectorized Kit
2672A Yellow, Reflectorized Kit
2673 Red Kit
2673A Yellow Kit

Material:

- Acrylic lens & housing
- Chrome ABS bezel
- 18 gauge wire
- Light Source:**
- Light Emitting Diodes (LEDs)
- Designed at 12.8v, .05 amp



Marker & Clearance Slimline Lamps 6 Diode Pattern

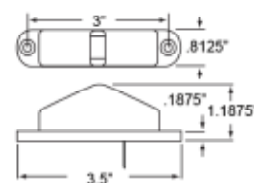


- Narrow rail deflector mount hard-wired design to eliminate corrosion
- Surface mount, slim style is an LED upgrade option for U-Haul & Stoughton trailers
- SAE PC rated for combination clearance/marker application
- Mounting pad including

2670 Red
2670A Yellow

Material:

- Polycarbonate lens and housing
- 18 gauge wire
- Light Source:**
- Light Emitting Diodes (LEDs)
- Designed at 12.8v, .06 amp



Marker & Clearance Chrome Plated 2 Diode Pattern

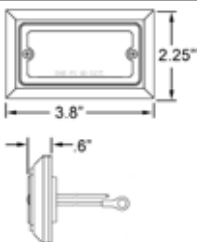


- Flush mount design with 2 LEDs for a full pattern
- Mounting gasket included

2675 Red
2675A Yellow

Material:

- Acrylic lens
- Chrome plated ABS housing
- 16 gauge 2 wire
- Light Source:**
- Light Emitting Diodes (LEDs)
- Replacement Parts:**
- 9775 red lens
- 9775A yellow lens



Marker & Clearance w/ Chrome Bezel 6 or 4 Diode Pattern

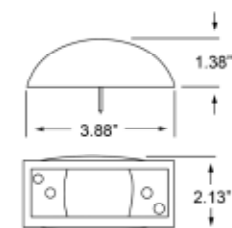


- Hard-wired design eliminates pin corrosion
- Replaceable 6 or 4 diode pattern
- SAE PC rated for combination clearance/marker application
- Narrow rail deflector mount
- Mounting pad including

2671 Red
2671A Yellow

Material:

- Acrylic lens
- Chrome plated bezel with steel base
- 18 gauge wire
- Light Source:**
- Light Emitting Diodes (LEDs)
- Designed at 12.8v, .065 amp



IMPORTANT NOTE: Every lamp, reflex reflector & conspicuity treatment must be permanently attached in the location specified below & must comply with all applicable requirements prescribed for it by FMVSS/CMVSS 108. The face of any device on the front/rear & sides should be, respectively perpendicular & parallel to the vehicle's centerline, unless it is photometrically certified at installation angle. No part of the vehicle shall prevent any device from meeting its prescribed requirements unless an auxiliary device meeting all prescribed requirements is installed.

IN CANADA: Manufacturers & importers of vehicles must have the proper certification test records demonstrating compliance of lighting components with all prescribed requirements.

BASIC EQUIPMENT REQUIRED ON ALL TRAILERS

DESCRIPTION				MANDATORY REQUIREMENTS			
Area	Equipment	SAE Lens Coding	Functional Purpose	Quantity	Color	Location	Height mm(in.) from the ground
1	Tail Lamps	(T)	Indicate vehicle's presence and width	Minimum 2	Red	On the rear - symmetrical as far apart as practicable	380-1830 (15-72)
	Stop Lamps	(S)	Indicate braking	Minimum 2	Red	On the rear - symmetrical as far apart as practicable	380-1830 (15-72)
	Rear Turn Signal Lamps	(I)	Indicate direction of turn	Minimum 2	Red or Yellow	On the rear - symmetrical as far apart as practicable	380-2110 (15-83)
	Rear Reflex Reflectors	(A)	Indicate vehicle's presence and width	Minimum 2	Red	On the rear - symmetrical as far apart as practicable facing rearward	380-1530 (15-60)
2	License Plate Lamp(s)	(L)	Illuminates license plate	Minimum 1	White	On the rear - above or at the sides of license plate	No requirement
3	Rear Side Marker Lamps *photometrically certified at installation angle	(P2, PC* or P3, PC2*)	Front and rear side marker lamps / side reflex reflectors indicate vehicle's presence and length	Minimum 2	Red	Each side at rear as far back as practicable	380-1530 (15-60) no max. for veh. under 2032mm (80") wide
	Rear Side Reflex Reflectors	(A)		Minimum 2	Red	Each side at rear as far back as practicable facing sideward	380-1530 (15-60)
4	a Front Side Marker Lamps *photometrically certified at installation angle	(P2, PC* or P3, PC2*)		Minimum 2	Yellow	Each side at front as far forward as practicable	380 (15) minimum
	b Front Side Reflex Reflectors	(A)		Minimum 2	Yellow	Each side at front as far forward as practicable facing sideward	380-1530 (15-60)

ADDITIONAL EQUIPMENT FOR TRAILERS EXCEEDING THE FOLLOWING PARAMETERS

Length 9.1m (30 ft.) or longer

DESCRIPTION				MANDATORY REQUIREMENTS			
Area	Equipment	SAE Lens Coding	Functional Purpose	Quantity	Color	Location	Height mm(in.) from the ground
5	a Intermediate Side Marker Lamps	(P2 or P3)	Indicate presence of a long vehicle	Minimum 2	Yellow	Each side near center facing sideward	380 (15) minimum
	b Intermediate Side Reflex Reflectors	(A)	Indicate presence of a long vehicle	Minimum 2	Yellow	Each side near center facing sideward	380-1530 (15-60)

Width 2032mm (80 in.) or wider

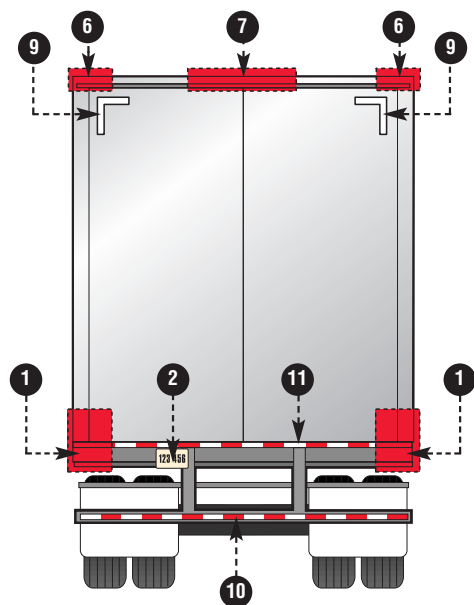
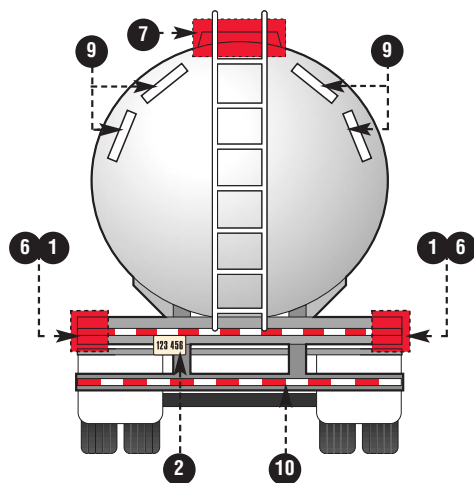
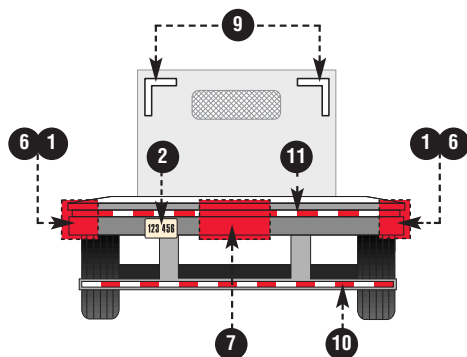
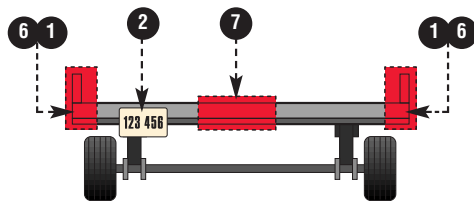
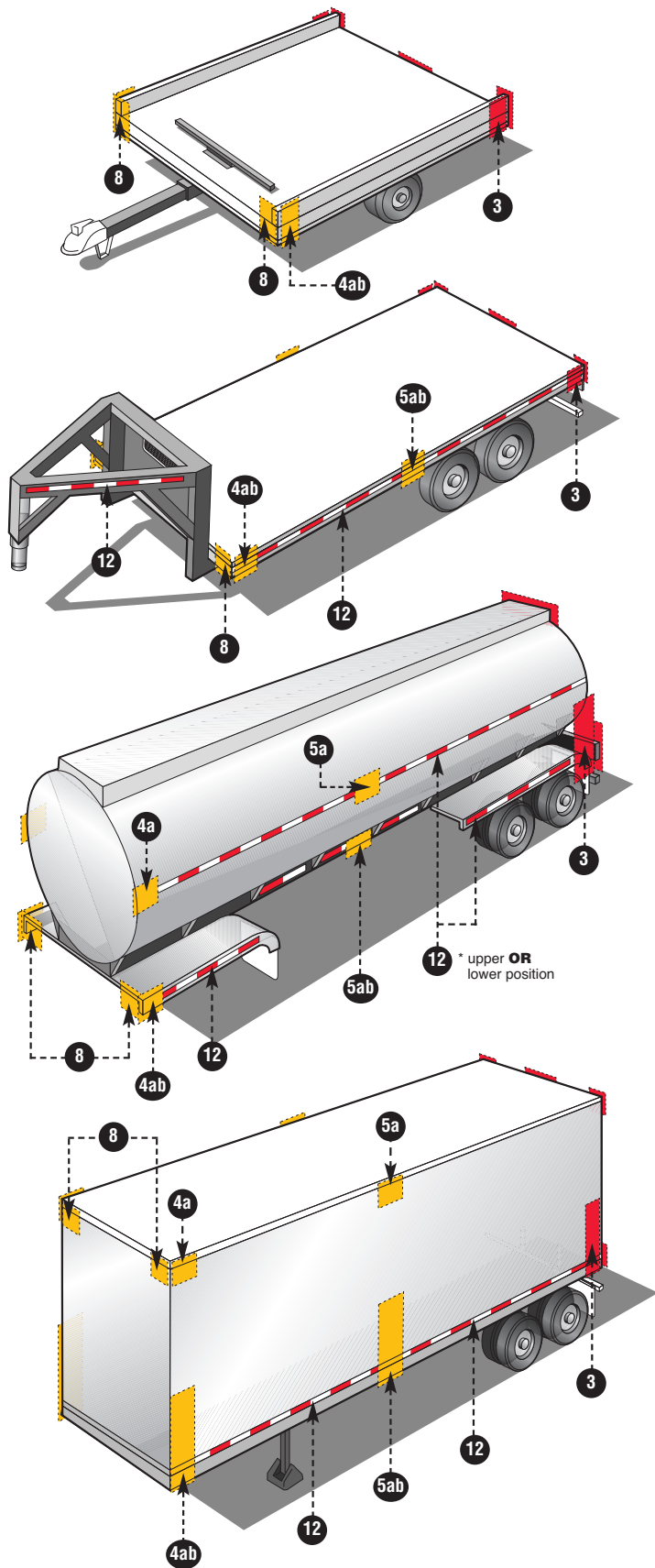
DESCRIPTION			MANDATORY REQUIREMENTS				
Area	Equipment	SAE Lens Coding	Functional Purpose	Quantity	Color	Location	Height
6	Rear Clearance Lamps *photometrically certified at installation angle	(P2, PC* or P3, PC2*)	Show vehicle's width MAY NOT be combined with tail lamps	Minimum 2	Red	At widest point - symmetrical on the rear or near the rear facing rearward	As high as practicable may be lower only if ID lamps are at the top
7	Rear Identification (ID) Lamps	(P2 or P3)	Indicate presence of a wide vehicle	Exactly 3	Red	On the rear - center horizontally spaced 150mm (6 in.) to 300mm (12 in.) apart facing rearward	At the top - may be lower if door header narrower than 25mm
8	Front Clearance Lamps *photometrically certified at installation angle	(P2, PC* or P3, PC2*)	Show vehicle's width	Minimum 2	Yellow	At widest point - symmetrical on the front or near the front facing forward	As high as practicable

Width 2032mm (80 in.) or wider AND GVWR 4536 kg (10,001 lb.) or more

DESCRIPTION		MANDATORY REQUIREMENTS					
Area	Conspicuity Treatment	DOT Coding	Quantity	Color	Location	Height	Options
9	Rear Upper Body Markings	DOT-C DOT-C2 DOT-C3 DOT-C4	Exactly 2 pairs of 300mm long strips	White	On the rear upper corners facing rearward	At the top	Reflex reflectors may not be required if they are replaced in their required location with conspicuity treatment. Optional in Canada: Rear lower body and side conspicuity treatment may also be solid white, solid yellow, or white and yellow.
10	Bumper Bar Marking		Continuous	Red/White	On the rear bumper bar's horizontal element full width - facing rearward	No requirement	
11	Rear Lower Body Marking		Continuous	Red/White (see options)	On the rear full width of the vehicle facing rearward	As horizontal as practicable and as close as practicable to the range of 375 to 1525mm from the ground	
12	Side Marking		(see location)	Red/White (see options)	Each side - facing sideward continuous, or evenly spaced over minimum of 50% of length starts and ends as close to the front and rear of the vehicle as practicable	As horizontal as practicable and as close as practicable to the range of 375 to 1525mm from the ground	

NOTE: The edge of red conspicuity tape shall not be closer than 75 mm to the edge of any amber lamp and the edge of white conspicuity tape shall not be closer than 75 mm to the edge of any lamp

Trailer Equipment Location Requirements



IMPORTANT NOTE: Every lamp, reflex reflector & conspicuity treatment must be permanently attached in the location specified below & must comply with all applicable requirements prescribed for it by FMVSS/CMVSS 108. The face of any device on the front/rear & sides should be, respectively perpendicular and parallel to the vehicle's centerline, unless it is photometrically certified at installation angle. No part of the vehicle shall prevent any device from meeting its prescribed requirements unless an auxiliary device meeting all prescribed requirements is installed.

IN CANADA: Manufacturers & importers of vehicles must have the proper certification test records demonstrating compliance of lighting components with all prescribed requirements.

BASIC EQUIPMENT REQUIRED ON ALL TRUCKS, BUSES & MPVS

DESCRIPTION				MANDATORY REQUIREMENTS			
Area	Equipment	SAE Lens Coding	Functional Purpose	Quantity	Color	Location	Height mm(in.) from the ground
1	Headlamps - Lower Beam	(H, HR) US requires "DOT" lettering on lens US&Canada - light source code required on lens	Forward road illumination	Minimum 2	White	On the front - symmetrical as far apart as practicable If 4 lamp system - outboard or above upper beams	560-1370 (22-54)
	Headlamps - Upper Beam	(H, HR) US requires "DOT" lettering on lens US&Canada - light source code required on lens	Forward road illumination	Minimum 2	White	On the front - symmetrical If 4 lamp system - inboard or below lower beams	560-1370 (22-54)
	Parking Lamps	(P) Vehicles less than 2032mm wide	Indicate parked vehicle	Minimum 2	White or Yellow	On the front - symmetrical as far apart as practicable	380-1830 (15-72)
	Daytime Running Lamps (DRL)	(Y2) Canada - required / US - option US requires "DRL" lettering on lens if not headlamp	Indicate in use vehicle	Minimum 2	White or Yellow	On the front - symmetrical as far apart as practicable	380 (15) min. Max. depends on type of DRL
2	Front Turn Signal/Hazard Warning Lamps	(I)	Indicate direction of turn/identify disabled vehicle	Minimum 2	Yellow	On the front- symmetrical as far apart as practicable	380-2110 (15-83)
	Front Clearance Lamps	(P2, PC* or P3, PC2*) Vehicles 2032mm wide or wider *photometrically certified at installation angle	Show vehicle's width	Minimum 2	Yellow	At widest point - symmetrical on the front or near the front facing forward	As high as practicable
3	Front Identification Lamps (ID)	(P2 or P3) Vehicles 2032mm wide or wider	Indicate presence of a wide vehicle	Exactly 3	Yellow	On the front - center horizontally spaced 150 mm (6 in.) to 300 mm (12 in.) apart	As high as practicable or on top of the cab
4	a Front Side Marker Lamps	(P2, PC* P3, PC2*) *photometrically certified at installation angle	Front and rear side marker lamps / side reflex reflector indicate vehicle's presence and length	Minimum 2	Yellow	Each side at front as far forward as practicable	380 (15) minimum
	b Front Side Reflex Reflectors	(A)		Minimum 2	Yellow	Each side at front as far forward as practicable facing sideward	380-1530 (15-60)
5	a Rear Side Marker Lamps **	(P2, PC* or P3, PC2*) *photometrically certified at installation angle		Minimum 2	Red	Each side at rear as far back as practicable	380 (15) minimum
	b Rear Side Reflex Reflectors **	(A) **not required on Truck Tractors		Minimum 2	Red	Each side at rear as far back as practicable facing sideward	380-1530 (15-60)
6	Rear Clearance Lamps	(P2, PC* or P3, PC2*) Vehicles 2032mm wide or wider Not required on Truck Tractors *photometrically certified at installation angle	Show vehicle's width MAY NOT be combined with tail lamps	Minimum 2	Red	At widest point - symmetrical on the rear or near the rear facing rearward	As high as practicable may be lower only if rear ID lamps are at the top
7	Rear Identification (ID) Lamps	(P2 or P3) Vehicles 2032mm wide or wider Not required on Truck Tractors	Indicate presence of a wide vehicle	Exactly 3	Red	On the rear - center horizontally spaced 150mm (6 in.) to 300mm (12 in.) apart facing rearward	At the top may be lower if door header narrower than 25mm
8	Tail Lamps	(T)	Indicate vehicle's presence and width	Minimum 2	Red	On the rear - symmetrical as far apart as practicable	380-1830 (15-72)
	Stop Lamps	(S)	Indicate braking	Minimum 2	Red	On the rear - symmetrical as far apart as practicable	380-1830 (15-72)
	Rear Turn Signal/Hazard Warning Lamps	(I)	Indicate direction of turn/identify disabled vehicle	Minimum 2	Red or yellow	On the rear - symmetrical as far apart as practicable	380-2110 (15-83)
	Rear Reflex Reflectors	(A)	Show vehicle's presence and width	Minimum 2	Red	On the rear - symmetrical as far apart as practicable	380-1530 (15-60)
9	Backup Lamp	(R)	Illuminates ground behind the vehicle and alert road users	Minimum 1	White	Rear	No requirement
10	License Plate Lamp(s)	(L)	Illuminates license plate	Minimum 1	White	On the rear - above or at the sides of license plate	No requirement
11	Center High Mounted Stop Lamp	(U3) Vehicles less than 2032mm wide and 4536kg	Indicates braking	1	Red	On the rear - centerline of the vehicle	860 (34) minimum

ADDITIONAL EQUIPMENT FOR SPECIFIC VEHICLES VEHICLES 9.1m (30 ft.) LONG OR LONGER

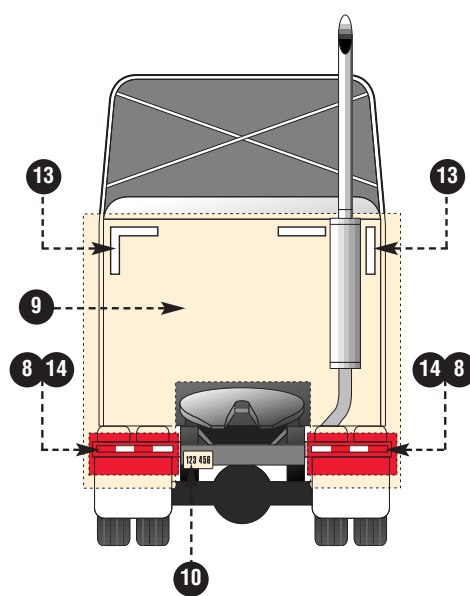
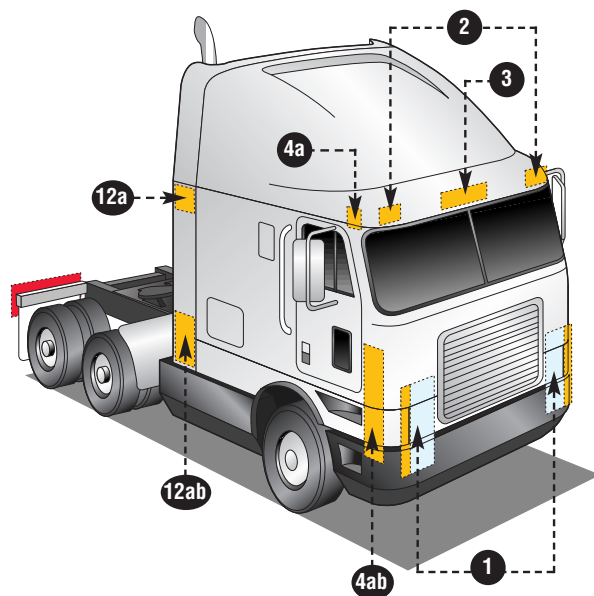
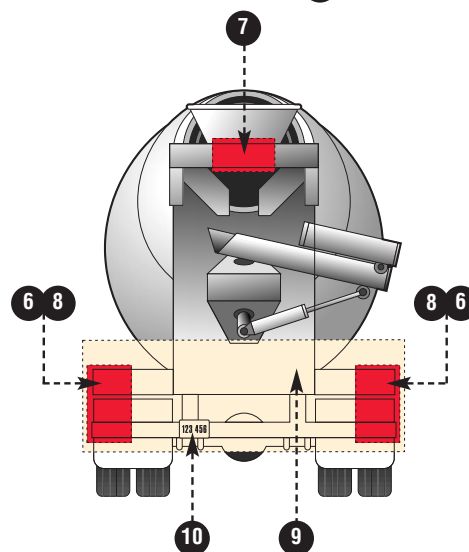
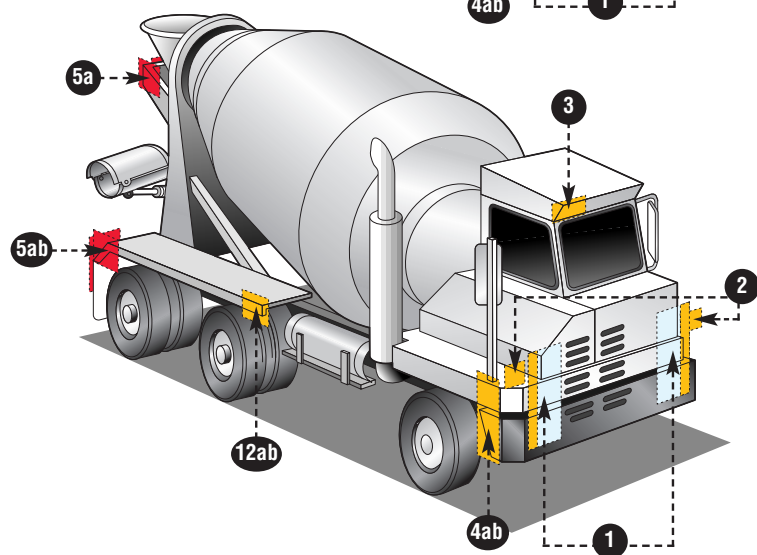
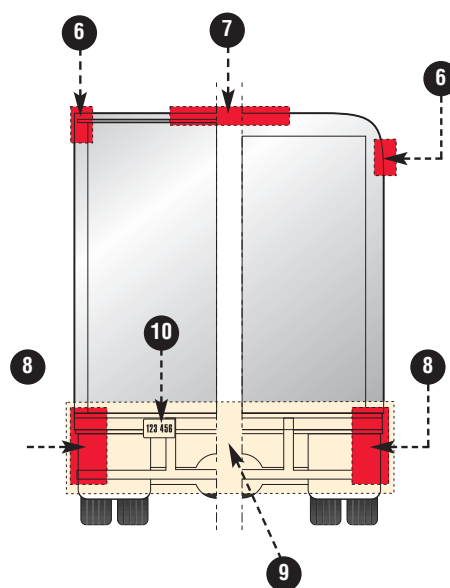
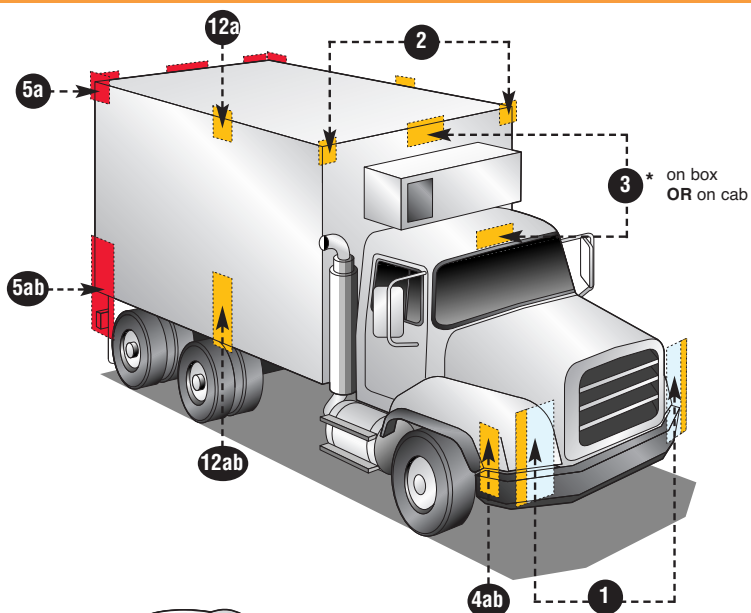
DESCRIPTION				MANDATORY REQUIREMENTS			
Area	Equipment	SAE Lens Coding	Functional Purpose	Quantity	Color	Location	Height mm(in.) from the ground
12	a Intermediate Side Marker Lamps	(P2 or P3)	Indicate presence of a long vehicle	Minimum 2	Yellow	Each side near center	380 (15) minimum
	b Intermediate Side Reflex Reflectors	(A)	Indicate presence of a long vehicle	Minimum 2	Yellow	Each side near center facing sideward	380-1530 (15-60)

Truck Tractors

DESCRIPTION		MANDATORY REQUIREMENTS					
Area	Conspicuity Treatment	DOT Coding	Quantity	Color	Location	Height	Options
13	Rear Upper Body Markings	DOT-C DOT-C2	Exactly 2 pairs of 300mm long strips	White	Rear upper corners of cab facing rearward	As high as practicable excluding fairings	
14	Rear Marking	DOT-C3 DOT-C4	Exactly 2 sections of min. 600mm each	Red/White	Rear - facing rearward - on fenders, on mud flap brackets, or within 300mm below the top of mud flaps	As horizontal as practicable and not higher than 1525mm from the ground	If mud flaps not used - on the cab or frame mounted brackets

NOTE: The edge of red conspicuity tape shall not be closer than 75 mm to the edge of any amber lamp and the edge of white conspicuity tape shall not be closer than 75 mm to the edge of any lamp

Truck, Bus, MPV Equipment Location Requirements



Truck, Bus, MPV Equipment Location Requirements

